

Weekly Stock Market Report

Thursday, April 05, 2018

Broad Market Measurement

	5-Apr-18	29-Mar-18	% Change
Trailing P/E	16.85	16.17	▲ 4.20%
Annualized P/E	17.68	17.06	▲ 3.61%
Price/ NAV	2.23	2.14	▲ 4.19%
Dividend Yield	3.43%	3.57%	▼ -3.94%
Market RSI	57.52	38.56	▲ 49.2%

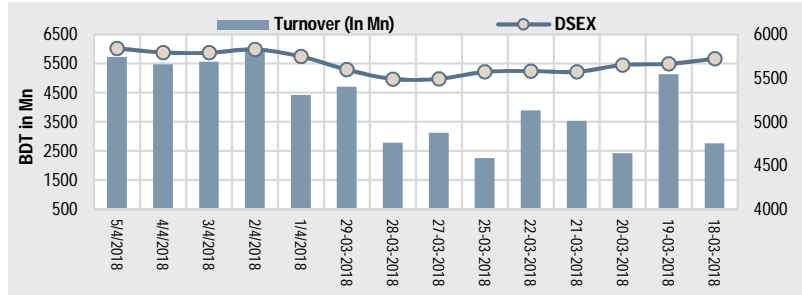
Economic Update

	4-Apr-18	22-Mar-18	% Change
Forex Reserve(mn \$)	32668.26	32208.76	▲ 1.4%
Call Money Rate	4.55	4.51	▲ 0.9%
Dollar Exchange Rate	82.96	82.96	▲ 0.0%
Euro Exchange	116.65	117.34	▼ -0.6%
Pound Exchange Rate	101.81	102.34	▼ -0.5%

Market Breadth

Losers	33.00
Unchanged	14.00
Gainers	293.00

DSE Weekly Overview



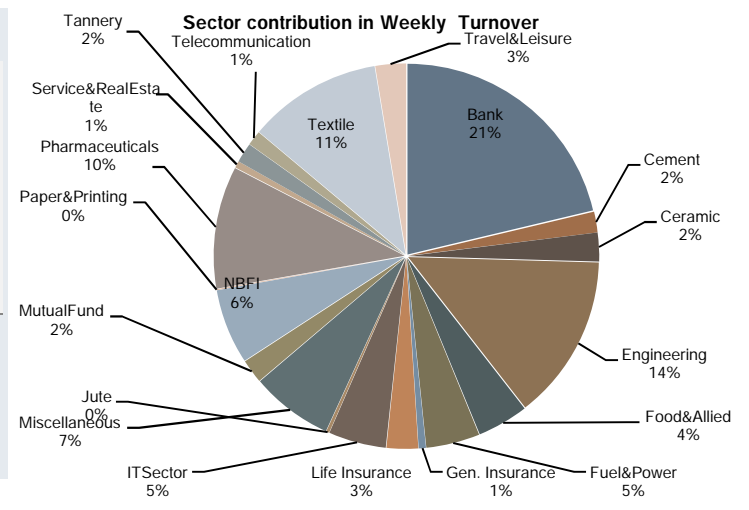
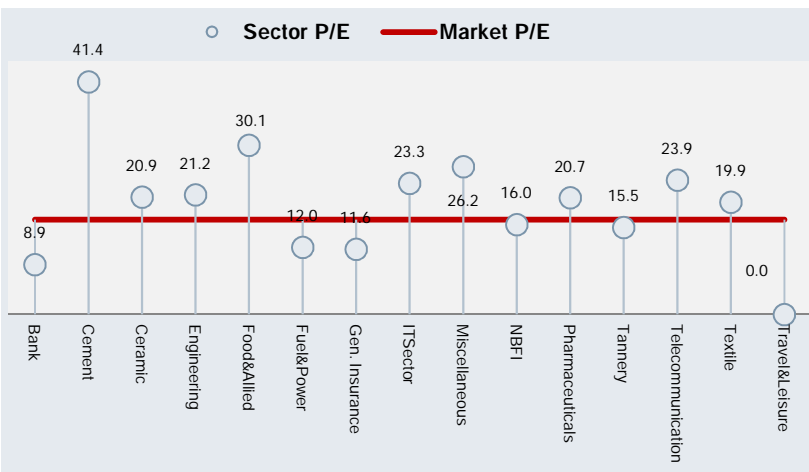
Index	Close	Open	% Change	Point Change
DSEX	5841.19	5597.44	▲ 4.4%	▲ 243.75
DS30	2194.54	2106.02	▲ 4.2%	▲ 88.51

Market Activities Summary

	This Week	Prev. Week	% Change
Avg. Daily Turnover (BDT mn)	5429.26	3209.27	▲ 69.2%
Avg. Daily Turnover (USD mn)	67.38	39.83	▲ 69.2%
Total No of Trade	580615	297844	▲ 94.9%
Avg. Trade Volume	163691252	92350614	▲ 77.2%

Weekly Sector Overview

	Listed Company	Trailing P/E	P/B	Average Daily Turnover BDT (mn)	% Δ in Turnover	Average Volume	% Change in volume	Sector Capitalization (BDT In Mn)	Weekly Return
Bank	30.0	8.9	1.16	1094.72	107%	42847460	85%	635300.42	5.19%
Cement	7.0	41.4	3.37	90.28	127%	1252754	118%	124311.82	4.58%
Ceramic	5.0	20.9	1.86	124.53	97%	1757052	64%	25762.50	3.45%
Engineering	36.0	21.2	2.01	720.48	112%	14974133	85%	195118.10	6.55%
Food&Allied	18.0	30.1	17.07	223.69	51%	4832444	60%	284212.25	-0.08%
Fuel&Power	18.0	12.0	1.50	233.77	53%	2980903	39%	358147.75	3.50%
Gen. Insurance	35.0	11.6	0.98	32.19	-2%	1587624	25%	39502.85	0.85%
Life Insurance	12.0	N/M*	0.00	138.46	205%	2289667	248%	52401.17	7.09%
ITSector	8.0	23.3	2.42	251.82	176%	6365053	225%	16136.88	8.68%
Jute	3.0	-34.9	4.12	12.79	21%	40304	44%	1801.00	2.28%
Miscellaneous	12.0	26.2	1.16	358.08	200%	11598219	171%	97430.64	5.72%
MutualFund	37.0	N/M*	0.00	105.11	67%	12251433	52%	42734.39	1.24%
NBFI	23.0	16.0	2.20	326.94	134%	11649715	95%	220591.85	10.30%
Paper&Printing	2.0	-13.4	1.12	2.99	200%	198099	240%	1895.05	0.87%
Pharmaceuticals	28.0	20.7	3.22	533.26	14%	10834266	25%	546764.81	1.93%
Service&RealEstate	4.0	26.4	2.00	29.12	65%	907504	50%	15861.11	4.89%
Tannery	6.0	15.5	3.55	86.77	87%	2186598	95%	26501.93	-0.12%
Telecommunication	2.0	23.9	16.68	63.91	-51%	173534	-42%	660306.43	3.34%
Textile	50.0	19.9	0.99	581.22	84%	30583957	93%	111551.86	5.96%
Travel&Leisure	4.0	-25.0	0.69	133.77	221%	3042304	141%	25948.49	4.60%



Weekly Observation

Index closed green for the second week with substantial gains

The benchmark DSEX index gained ~243.75 points, a 4.4% increase over the last trading week. This week had five trading days with four of the days closing green. Index gained a total of ~230 points which contributed to the substantial weekly increase of the index. The third trading day showed a small loss and followed by a small increase on the fourth day. Final day of the week closed with ~48.14 points gain. Market participation has increased by 69.2%. It must be noted that last week had only four trading days. Financial stocks has shown positive movement again this week with NBF1 posting the highest (10.30%). All other major sectors posted positive movements too. Average Trade Volume increased by 77.2% and total number of trades increased by 94.9%.

Among the economic issues, Bangladesh Bank has slashed CRR by 1% and SOE's can deposit 50% of their fund with PCB's. These steps was taken to mitigate the ongoing liquidity crunch. BB has also made funds cheaper for the banks by reducing repo rate by 75 basis points. Export earnings fell 1.38% year-on-year to USD 3.05 billion in March due to a decline in leather goods shipment and inflation came down slightly to 5.68% in March riding on a decline in food prices, according to the Bangladesh Bureau of Statistics (BBS). Japan has offered some USD1.83 billion in assistance for bankrolling Bangladesh's six major development projects on communications infrastructures, power and port. Also, Net foreign investment in stocks marked a substantial rise in March this year as overseas investors put funds taking advantage of the lucrative price level.

Top gaining stocks of the week were MONNOSTAF (+41.86%), SHASHADNIM (+22.27%), and RENWICKJA (+21.14%). Conversely, top losing stocks were NITOLINS (-16.06%), VAMLRBBF (-15.89%), and CENTRALINS (-5.88%). GP topped the weekly turnover list followed by BRACBANK, BEXIMCO, IFADAUTOS, LANKABAFIN and UNIQUEHRL.

-Mashqurur Rahman

Weekly Top Performer

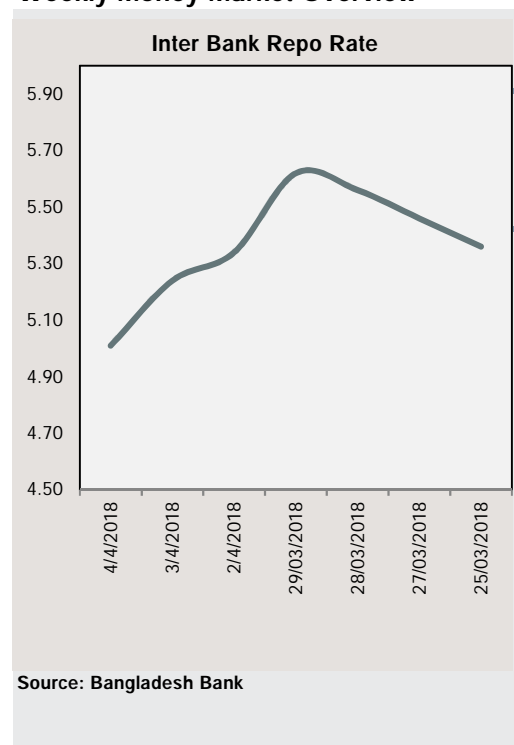
Turnover Leaders			
Company	Closing Price	% Δ	Avg. Daily Turnover (mn)
BRACBANK	103.50	6.5%	239.64
BEXIMCO	28.70	18.1%	210.85
IFADAUTOS	123.00	4.2%	135.89
LANKABAFIN	32.30	9.9%	132.80
UNIQUEHRL	61.90	5.1%	118.78
MONNOCERA	148.30	11.6%	102.89
AAMRANET	103.60	9.9%	99.98
MERCANBANK	23.00	7.5%	99.72
CITYBANK	42.80	8.1%	98.11
BXPHERMA	109.00	6.0%	87.03

Top Gainers/Least Losers			
Company	Closing Price	% Δ	Avg. Daily Turnover (mn)
MONNOSTAF	1117.30	41.86%	15.12
2 SHASHADNIM	58.20	22.27%	42.59
3 RENWICKJA	681.80	21.14%	7.46
4 REGENTTEX	18.40	19.48%	15.87
5 PRIMELIFE	53.90	18.46%	4.07
6 BEXIMCO	28.70	18.11%	210.85
7 RUPALILIFE	54.30	17.53%	36.87
8 ICB	144.60	17.18%	28.25
9 AIL	95.70	15.44%	38.37
# ZEALBANGLA	60.50	13.94%	0.43

Market Cap Leaders			
Company	Closing Price	% Δ	Avg. Daily Turnover (mn)
GP	477.10	3.3%	59.16
SCURPHARMA	315.20	1.7%	83.86
BATBC	3413.60	-0.6%	1.64
ICB	144.60	17.2%	28.25
BRACBANK	103.50	6.5%	239.64
RENATA	1248.70	1.2%	4.37
LHBL	60.10	5.6%	61.92
UPGDCL	160.40	3.4%	27.28
OLYMPIC	274.60	-0.1%	11.88
BERGERPBL	2123.70	0.8%	0.12

Top Losers/Least Gainers			
Company	Closing Price	% Δ	Avg. Daily Turnover (mn)
# NITOLINS	27.70	-16.06%	0.11
# VAMLRBBF	9.00	-15.89%	0.85
# CENTRALINS	20.80	-5.88%	0.02
# BEACHHATCH	15.00	-5.66%	0.71
# ZAHEENSPIN	13.60	-5.56%	68.53
# TAKAFULINS	25.60	-4.83%	0.57
# STANDARINS	32.10	-3.89%	8.36
# KPPL	11.30	-3.42%	2.13
# MERCINS	21.30	-3.18%	3.61
# SONARGAON	18.50	-3.14%	1.19

Weekly Money Market Overview



Weekly Stock Market Report

Sectorwise Traded Scripts

Ticker	Weekly Market Statistics									Market Technical and Fundamental Indicators						
	Close	High	Low	Avg Daily Volume	Avg Daily Turnover	Δ In Turnover	% of Sector Turnover	Return	RSI****	EV/EA (10)*****	Market Cap	P/E*	P/B**	ROE***		
Bank																
ABBANK	16.6	18	16.0	1852353	31.07	▲	130%	2.84%	▲	5.1%	47.31	20.32	20975	25.75	0.86	6%
ALARABANK	23.9	24	24	385556	9.21	▼	-37%	0.84%	▲	1.3%	52.18	14.30	23764	7.56	1.21	16%
BANKASIA	19.3	20	19.0	255701	5.06	▲	94%	0.46%	▲	3.2%	39.02	16.21	19049	8.00	1.00	9%
BRACBANK	103.5	105	92	2371834	239.64	▲	139%	21.89%	▲	6.5%	74.25	48.86	88514	17.05	3.98	24%
CITYBANK	42.8	43	40.0	2352451	98.11	▲	149%	8.96%	▲	8.1%	64.06	20.06	37484	8.65	1.53	17%
DHAKABANK	17.5	18	17	2271285	40.06	▲	134%	3.66%	▲	6.1%	53.01	19.02	12640	8.49	0.85	11%
DUTCHBANGL	114.5	120	113.9	120879	14.08	▲	174%	1.29%	▲	0.4%	43.69	102.91	22900	9.32	1.30	14%
EBL	41.7	42	40	494276	20.61	▲	375%	1.88%	▲	3.7%	57.58	27.99	30775	10.10	1.48	13%
EXIMBANK	14.1	15	13.7	2404127	34.53	▲	153%	3.15%	▲	4.4%	49.65	8.63	19913	5.76	0.75	12%
FIRSTSBANK	12.9	14	12	1499045	19.61	▲	147%	1.79%	▲	7.5%	52.59	8.77	9195	8.04	0.85	14%
ICBIBANK	5.3	6	5.1	232725	1.28	▲	115%	0.12%	▼	-1.9%	39.74	4.41	3523	0.00	-0.35	4%
IFIC	16.1	16	15	2436010	38.67	▲	52%	3.53%	▲	8.1%	57.24	20.99	10167	7.80	0.82	12%
ISLAMIBANK	28.7	31	27.7	2675985	78.08	▲	365%	7.13%	▲	5.1%	43.96	27.97	46207	12.59	0.95	9%
JAMUNABANK	20.8	21	18	679320	13.68	▲	38%	1.25%	▲	13.7%	62.87	11.80	12774	6.08	0.81	11%
MERCANBANK	23.0	24	21.5	4401082	99.72	▲	18%	9.11%	▲	7.5%	57.01	9.68	17001	5.91	1.01	18%
MTB	32.0	32	30	402136	12.79	▲	217%	1.17%	▲	6.0%	55.38	19.09	16309	16.63	1.66	16%
NBL	11.9	13	11.4	4308728	51.79	▲	227%	4.73%	▲	5.3%	51.57	9.30	28208	5.38	0.78	16%
NCCBANK	16.6	17	16	656965	10.94	▲	90%	1.00%	▲	8.5%	57.48	9.04	14661	6.13	0.88	13%
ONEBANKLTD	20.8	21	19.6	1031630	21.29	▲	63%	1.94%	▲	7.8%	54.11	14.59	15185	5.00	1.21	21%
PRIMEBANK	20.4	22	20	445215	9.30	▼	-21%	0.85%	▲	2.5%	45.08	18.96	20999	6.13	0.83	8%
PREMIERBAN	14.3	15	13.3	3788624	54.35	▲	133%	4.96%	▲	9.2%	62.88	8.19	9949	5.05	0.93	17%
PUBALIBANK	24.6	27	24	248933	6.16	▲	81%	0.56%	▲	1.7%	41.41	20.63	22740	13.02	0.93	7%
RUPALIBANK	53.4	56	49.1	516461	27.22	▲	194%	2.49%	▲	10.6%	55.67	39.81	15477	10.55	1.21	-10%
SHAHJABANK	28.2	29	27	378830	10.67	▼	-21%	0.97%	▲	3.7%	45.56	12.30	20718	11.56	1.59	13%
SIBL	20.0	21	19.9	2342641	47.37	▲	457%	4.33%	▲	1.5%	40.30	13.09	14766	6.54	1.04	17%
SOUTHEASTB	18.6	19	18	671454	12.61	▲	125%	1.15%	▲	2.8%	46.43	16.88	17055	6.76	0.64	9%
STANDBANKL	12.7	14	12.6	1035325	13.48	▲	274%	1.23%	▲	2.4%	46.03	9.22	10056	8.14	0.80	10%
TRUSTBANK	42.0	42	40	641767	26.44	▲	356%	2.41%	▲	5.5%	62.58	23.04	23393	10.78	2.03	19%
UTTARABANK	28.5	30	26.9	1077137	30.80	▲	59%	2.81%	▲	7.5%	51.17	21.47	11402	7.36	0.85	12%
UCB	18.5	19	18	868985	16.07	▼	-49%	1.47%	▲	3.9%	39.55	20.70	19501	7.17	0.76	11%

Cement

ARAMITCEM	26.7	28.3	25.6	48062	1.26	▲	145%	1.40%	▲	0.8%	43.98	36.32	905	0.00	2.39	-23%
CONFIDCEM	161.4	162.8	157.1	129227	20.64	▲	111%	22.87%	▲	2.1%	51.96	83.61	8714	18.28	2.63	16%
HEIDELBCEM	396.9	408.0	380.0	9697	3.84	▲	96%	4.25%	▲	5.4%	60.99	588.06	22426	22.86	4.01	27%
LHBL	60.1	62.6	56.6	1036026	61.92	▲	129%	68.59%	▲	5.6%	62.36	83.29	69799	87.10	4.54	5%
MEGHNACEM	92.7	95.8	89.5	17587	1.64	▲	1582%	1.82%	▲	2.5%	46.34	99.16	2086	30.20	2.53	8%
MICEMENT	78.6	80.0	76.0	6888	0.54	▲	54%	0.60%	▲	4.2%	53.22	68.40	11672	26.46	1.64	10%
PREMIERCEM	82.6	88.9	82.2	5267	0.44	▲	254%	0.49%	▼	-1.7%	46.37	78.83	8710	21.68	2.03	13%

Ceramic

FUWANGCER	16.6	17.2	16.3	830878	13.88	▲	78%	11.15%	▲	1.8%	52.53	11.58	2056	24.23	1.84	7%
MONNOCERA	148.3	151.8	134.8	716266	102.89	▲	112%	82.62%	▲	11.6%	63.54	34.72	3726	87.26	1.64	0%
RAKCERAMIC	47.1	47.9	46.2	120838	5.68	▲	35%	4.56%	▲	2.2%	53.23	66.80	16659	16.35	2.84	18%
SPCERAMICS	17.6	18.3	17.0	83839	1.48	▼	-28%	1.19%	▲	2.9%	46.19	11.36	2587	33.85	0.58	0%
STANCERAM	113.7	115.8	112.0	5231	0.59	▼	-14%	0.48%	▲	1.0%	50.07	49.46	735	62.53	6.77	-2%

Engineering

AFTABAUTO	58.9	61.1	57.0	53635	3.12	▲	241%	0.43%	▲	3.7%	50.03	53.61	5639	13.45	0.99	7%
ANWARGALV	77.5	79.6	72.0	394506	30.01	▲	173%	4.17%	▲	8.2%	54.40	67.61	1125	57.95	9.55	13%
APOLOSPAT	14.9	15.4	14.5	1741294	25.82	▲	44%	3.58%	▲	3.5%	60.07	0.00	5805	163.90	0.74	6%
ATLASBANG	134.1	136.0	131.9	16230	2.17	▲	195%	0.30%	▲	4.4%	51.81	146.89	4038	1446.18	0.90	-2%
AZIZPIPES	138.4	141.2	125.6	41968	5.59	▲	149%	0.78%	▲	12.2%	54.14	41.38	705	224.50	-2.71	-1%
BBSCABLES	83.9	87.0	75.3	999100	81.80	▲	92%	11.35%	▲	12.8%	0.00	0.00	11578	11.80	5.03	25%
BDAUTOCA	119.2	122.0	111.4	86308	10.13	▲	117%	1.41%	▲	7.4%	51.77	36.48	460	97.10	43.03	40%
BBS	32.9	33.5	31.7	305024	9.98	▲	6%	1.38%	▲	5.1%	52.59	36.44	4641	14.36	2.50	20%
BDLAMP	188.5	189.9	174.0	58950	10.81	▲	167%	1.50%	▲	9.1%	55.73	200.17	1766	39.85	2.01	5%
BDTHAI	25.8	26.8	24.2	2403384	60.93	▲	138%	8.46%	▲	7.5%	52.50	31.68	2836	0.00	0.89	-2%
BENGLWTL	34.4	34.5	32.3	98655	3.32	▲	173%	0.46%	▲	7.5%	55.50	52.33	3147	24.18	1.44	7%
BSRMLTD	102.7	104.0	91.8	212971	20.98	▲	231%	2.91%	▲	12.0%	76.34	128.42	22040	31.01	2.03	7%

Weekly Stock Market Report



Sectorwise Traded Script

Ticker	Weekly Market Statistics								Market Technical and Fundamental Indicators							
	Close	High	Low	Avg Daily Volume	Avg Daily Turnover (BDTmn)	Δ in	Turnover % of Sector	weekly Return	RSI****	EMA (10)*****	Market Cap BDT Mn	P/E*	P/B**	ROE***		
Engineering																
BSRMSTEEL	75.4	76.6	72.2	89914	6.71	▼	-19%	0.93%	▲	2.9%	66	90.58	25770	17.95	2.24	19.1%
DESHBANDHU	19.7	19.8	18.4	1137282	21.75	▲	178%	3.02%	▲	8.8%	59	11.73	1099	49.25	1.76	3.4%
ECABLES	207.1	211.0	191.0	56539	11.38	▲	188%	1.58%	▲	10.4%	53	132.18	4970	172.58	6.76	3.9%
GOLDENSON	11.8	12.4	11.7	46619	0.56	▲	74%	0.08%	▲	0.0%	36	25.97	2026	0.00	0.51	-5.3%
GPHISPAT	38.7	40.0	36.0	195279	7.47	▲	325%	1.04%	▲	8.7%	62	38.06	12672	20.90	2.52	11.6%
IFADAUTOS	123.0	125.5	118.3	1106841	135.89	▲	152%	18.86%	▲	4.2%	58	105.79	28112	13.62	4.68	26.7%
KAY&QUE	144.9	151.5	138.1	8827	1.28	▲	10%	0.18%	▲	1.4%	47	17.88	710	90.00	-12.61	-1.0%
KDSALTD	58.3	59.7	56.0	75144	4.37	▲	258%	0.61%	▲	4.7%	54	76.60	3335	26.14	2.35	9.2%
MONNOSTAF	1117.3	1117.3	809.0	15839	15.12	▲	134%	2.10%	▲	41.9%	79	260.44	514	655.73	24.59	1.1%
NAHEEACP	49.4	51.7	48.0	835519	41.63	▲	80%	5.78%	▲	3.8%	44	260.44	2371	12.08	4.68	26.5%
NAVANACNG	61.1	62.3	55.9	77237	4.66	▲	125%	0.65%	▲	10.1%	54	45.40	4187	21.22	1.82	9.3%
NPOLYMAR	79.9	81.9	78.2	49836	3.99	▲	239%	0.55%	▲	3.6%	53	90.10	1959	34.34	1.90	6.6%
NTLTUBES	124.5	127.0	118.0	278945	34.42	▲	116%	4.78%	▲	7.4%	48	90.07	3583	0.00	0.62	-1.3%
OAL	16.7	17.1	15.6	1779911	29.13	▲	129%	4.04%	▲	9.9%	52	32.35	2574	15.17	1.14	8.2%
OIMEX	43.4	43.9	42.3	358892	15.49	▲	41%	2.15%	▲	3.1%	49	32.35	2191	15.34	4.18	19.5%
QUASEMIND	72.6	73.8	70.0	157839	11.30	▲	109%	1.57%	▲	4.9%	57	97.12	3815	43.01	1.92	4.9%
RANFOUNDRY	135.8	137.0	131.3	32410	4.36	▲	46%	0.61%	▲	3.0%	55	100.77	1358	33.28	5.72	17.5%
RENWICKJA	681.8	681.8	563.2	11591	7.46	▲	759%	1.04%	▲	21.1%	75	247.64	1364	140.00	-19.11	-12.5%
RSRMSTEEL	54.1	54.6	49.0	472688	24.93	▲	183%	3.46%	▲	11.1%	56	48.13	5474	6.56	1.42	20.0%
SALAMCRST	31.9	32.9	30.4	114155	3.61	▲	70%	0.50%	▲	5.3%	55	27.72	3138	27.50	1.63	5.7%
SHURWID	17.9	18.5	17.0	447969	8.05	▲	207%	1.12%	▲	5.9%	57	0.00	934	0.00	1.48	-4.7%
SINGERBD	185.7	186.0	181.2	208956	38.35	▲	117%	5.32%	▲	3.7%	55	153.16	14242	18.97	7.31	44.6%
WMSHIPYARD	24.5	25.5	23.9	864543	21.26	▲	0%	2.95%	▲	5.2%	47	32.77	3637	48.60	0.72	6.5%
YPL	19.1	19.4	18.4	139334	2.65	▲	161%	0.37%	▲	3.8%	50	0.00	1302	127.33	2.14	6.4%
Financial Institution																
BAYLEASING	24.3	25.8	24.0	62865	1.58	▲	29%	0.48%	▲	0.4%	43	18.80	3181	26.70	1.20	3.7%
BDFINANCE	20.1	21.6	19.8	567428	11.72	▲	11%	3.58%	▼	-0.5%	42	10.31	2783	9.74	1.39	8.8%
BIFC	9.6	10.2	9.1	13734	0.14	▲	66%	0.04%	▲	4.3%	50	8.10	967	0.00	3.05	-87.9%
DBH	140.3	143.7	131.8	49677	6.75	▲	68%	2.07%	▲	6.2%	75	106.19	17096	18.01	4.74	29.7%
FAREASTFIN	9.2	9.8	8.9	204049	1.91	▲	131%	0.58%	▲	2.2%	45	9.48	1509	0.00	0.73	4.9%
FASFIN	15.8	16.7	15.3	1559057	24.97	▲	59%	7.64%	▲	4.6%	48	10.54	2039	14.36	1.26	9.0%
FIRSTFIN	10.1	10.7	9.4	13324	0.13	▼	-27%	0.04%	▲	11.0%	45	11.10	1233	22.07	0.84	3.3%
GSPFINANCE	20.1	20.9	19.3	347297	7.00	▲	82%	2.14%	▲	5.8%	50	14.28	2597	6.93	1.02	14.0%
ICB	144.6	151.8	124.8	198540	28.25	▲	451%	8.64%	▲	17.2%	63	113.22	96080	17.74	2.56	12.3%
IDLC	72.7	73.0	68.9	371764	26.45	▲	224%	8.09%	▲	5.7%	57	62.23	27412	11.86	3.07	27.6%
ILFSL	19.3	19.4	17.8	1308467	24.38	▲	162%	7.46%	▲	10.3%	64	9.23	3467	13.57	1.49	5.4%
IPDC	35.8	36.4	34.3	183956	6.50	▲	263%	1.99%	▲	4.1%	44	29.21	7810	23.22	2.81	12.8%
ISLAMICFIN	20.1	20.4	19.5	790780	15.83	▲	81%	4.84%	▲	4.7%	65	15.37	2432	11.10	1.42	13.2%
LANKABAFIN	32.3	32.7	29.8	4189461	132.80	▲	143%	40.62%	▲	9.9%	50	29.23	16576	5.82	2.48	44.0%
MIDASFIN	37.2	38.0	36.5	31988	1.19	▲	61%	0.36%	▲	4.8%	51	14.90	4474	17.30	3.88	17.4%
NHFIL	38.7	38.9	36.9	69634	2.66	▲	38%	0.81%	▲	7.5%	49	27.69	4117	16.13	2.52	15.9%
PHOENIXFIN	35.1	36.8	32.5	224172	7.94	▲	365%	2.43%	▲	2.9%	48	19.84	4264	14.75	1.62	10.9%
PLFSL	11.1	11.7	11.0	248930	2.81	▲	28%	0.86%	▲	0.9%	41	14.71	3168	7.55	1.02	-13.2%
PREMIERLEA	16.0	16.4	15.0	685665	10.90	▲	511%	3.34%	▲	8.1%	58	8.66	1930	10.73	1.33	10.8%
PRIMEFIN	10.8	11.1	10.2	141352	1.52	▲	94%	0.47%	▲	4.9%	56	11.43	2947	0.00	1.06	-14.1%
UNIONCAP	16.3	17.3	15.7	202578	3.33	▲	161%	1.02%	▲	6.5%	48	14.59	2551	0.00	1.01	2.9%
UNITEDFIN	18.9	19.5	18.0	91982	1.74	▼	-20%	0.53%	▲	6.2%	54	20.93	3368	13.78	1.15	8.7%
UTTARAFIN	68.6	70.5	67.4	93015	6.44	▲	120%	1.97%	▲	1.3%	51	57.83	8590	8.84	1.51	15.2%
Food & Allied																
AMCL(PRAN)	217.7	221.5	215.0	10804	2.35	▲	71%	1.05%	▲	1.6%	50	189.89	1742	31.23	3.58	12.0%
APEXFOODS	232.8	236.0	210.5	195413	44.09	▲	136%	19.71%	▲	9.8%	72	107.87	1328	134.57	2.36	1.6%
BANGAS	273.7	276.9	262.0	12507	3.38	▲	22%	1.51%	▲	3.0%	59	286.54	1728	0.00	13.65	-5.2%
BATBC	3413.6	3450.0	3382.5	482	1.64	▼	-77%	0.73%	▼	-0.6%	46	2911.67	204816	26.16	23.01	105.7%
BEACHHATCH	15.0	16.4	14.9	45601	0.71	▼	-9%	0.32%	▼	-5.7%	38	13.23	621	0.00	1.33	-3.8%
EMERALDOIL	15.6	17.0	15.5	38545	0.62	▼	-29%	0.28%	▲	4.7%	38	52.07	932	0.00	1.39	37.2%
FINEFOODS	38.6	40.7	37.5	726442	28.32	▼	-5%	12.66%	▲	3.5%	50	8.16	524	45.13	3.86	6.4%
FUWANGFOOD	19.2	20.1	18.7	2163776	41.85	▲	75%	18.71%	▲	3.2%	50	16.68	1935	25.32	2.31	7.8%
GEMINISEA	437.9	449.8	403.7	80874	34.47	▲	119%	15.41%	▲	9.1%	64	387.40	1626	119.55	-343.06	598.9%
GHAIL	41.8	42.3	39.3	815507	33.36	▲	172%	14.91%	▲	6.9%	63	22.99	4557	21.78	2.41	13.2%
MEGCONMILK	30.5	33.5	30.0	25885	0.81	▼	-31%	0.36%	▼	-1.9%	45	7.11	488	0.00	-1.29	36.4%
MEGHNA PET	23.1	25.0	22.7	13360	0.32	▼	-65%	0.14%	▼	-2.1%	43	5.46	277	0.00	-15.21	31.6%
NTC	631.7	647.0	609.4	11548	7.23	▲	36%	3.23%	▲	3.7%	57	605.89	4169	38.75	5.03	11.5%
OLYMPIC	274.6	278.2	271.9	43151	11.88	▼	-46%	5.31%	▼	-0.1%	59	283.63	54903	32.61	21.77	89.1%

Weekly Stock Market Report

Sectorwise Traded Script

Weekly Market Statistics										Market Technical and Fundamental Indicators					
Ticker	Close	High	Low	Avg Daily Volume	Avg Daily Turnover (BDTmn)	Δ (%)	Turnover	% of Sector Turnover	Weekly Return	RSI****	EV/EA (10)****	Market Cap	P/E*	P/B**	ROE***
Food & Allied										BDT Mn					
RAHIMAFOOD	145.7	146.5	135.1	14021	1.95	▲	74%	0.87%	▲ 8%	55.30	42.99	2914	0.00	39.91	-4.4%
RDFOOD	15.6	16.0	15.0	614798	9.58	▲	202%	4.28%	▲ 5.4%	53.85	14.21	1026	28.04	1.17	4.3%
SHYAMPSUG	53.1	60.5	52.9	12557	0.71	▲	37%	0.32%	▲ 0.2%	41.94	6.26	266	0.00	63.65	38.2%
ZEALBANGLA	60.5	64.0	53.5	7174	0.43	▼	-2%	0.19%	▲ 13.9%	46.33	6.83	363	0.00	-0.27	26.8%
Fuel & Power															
BARKAPOWER	32.2	33.2	30.7	621730	20.05	▲	319%	8.58%	▲ 6.3%	55.40	29.97	6442	15.87	1.84	13.5%
BDWELDING	19.6	20.5	19.2	87944	1.74	▲	37%	0.74%	▲ 2.6%	36.88	17.70	841	8.99	1.56	13.5%
CVOPRL	224.5	227.0	216.1	161235	35.56	▲	71%	15.21%	▲ 4.0%	54.90	345.96	5668	0.00	15.71	-19.5%
LINDEBD	1246.5	1249.0	1226.0	3054	3.78	▲	83%	1.62%	▲ 1.7%	57.52	1156.26	18970	19.91	5.96	31.9%
DESCO	43.0	46.3	41.0	62809	2.67	▼	-23%	1.14%	▲ 3.9%	58.13	53.57	17096	0.00	1.14	1.2%
DOREENPWR	107.6	108.9	100.8	367072	38.80	▲	92%	16.60%	▲ 8.4%	60.07	53.57	11363	13.90	5.28	34.8%
EASTRNLU	1051.6	1078.0	965.0	7888	8.11	▲	69%	3.47%	▲ 8.0%	64.71	322.34	1045	25.28	7.35	31.9%
GBBPOWER	16.3	16.7	15.8	195516	3.18	▲	115%	1.36%	▲ 3.8%	53.15	16.38	1659	13.96	0.81	5.5%
JAMUNAOIL	180.0	181.9	177.2	73642	13.23	▲	215%	5.66%	▲ 1.5%	40.99	183.11	19876	9.03	1.25	14.5%
KPCL	55.7	56.6	54.3	81096	4.50	▲	83%	1.92%	▲ 2.8%	50.53	72.48	20124	10.56	2.09	19.7%
MJLBD	105.4	107.2	102.1	152991	16.03	▲	56%	6.86%	▲ 3.6%	46.81	87.83	31796	15.62	3.02	21.0%
MPETROLEUM	181.3	183.0	176.4	17605	3.16	▲	59%	1.35%	▲ 2.5%	44.38	175.19	19620	8.27	1.98	23.5%
PADMAOIL	219.9	224.4	216.2	19738	4.33	▲	51%	1.85%	▲ 1.9%	38.82	201.74	21601	9.75	2.37	23.4%
POWERGRID	51.5	54.9	48.7	181914	9.22	▲	212%	3.94%	▲ 7.3%	63.81	45.78	23737	9.83	0.57	5.2%
SPCL	95.7	97.2	91.6	227274	21.52	▲	165%	9.20%	▲ 6.2%	52.15	134.84	15410	18.72	3.16	19.1%
SUMITPOWER	35.5	35.8	34.8	337861	11.92	▼	-48%	5.10%	▲ 2.0%	53.53	36.32	37910	8.77	1.22	13.8%
TITASGAS	41.4	42.0	39.4	210583	8.69	▼	-7%	3.72%	▲ 3.2%	51.72	53.90	40954	8.16	0.63	8.1%
UPGDCL	160.4	162.7	155.5	170951	27.28	▼	-7%	11.67%	▲ 3.4%	56.78	140.53	64038	14.98	4.28	30.5%
Insurance															
AGRANINS	18.3	19.1	18.2	21685	0.40	▲	719%	0.24%	▼ -2.7%	41.16	14.21	502	10.23	1.10	11.6%
ASIAINS	18.9	19.4	18.4	3134	0.06	▲	21%	0.03%	▲ 3.8%	42.42	14.27	890	10.99	1.06	9.1%
ASIAPACINS	25.5	26.4	24.0	140	0.00	▼	-99%	0.00%	▲ 6.3%	58.76	14.44	1080	17.47	1.54	9.2%
BGIC	20.4	20.7	20.0	21230	0.43	▲	259%	0.25%	▼ -0.5%	50.48	16.96	1102	22.92	1.05	5.0%
BNICL	15.9	16.4	15.4	146280	2.32	▲	139%	1.36%	▲ 5.3%	48.71	14.44	704	9.64	0.98	12.1%
CENTRALINS	20.8	24.4	20.6	925	0.02	▼	-73%	0.01%	▼ -5.9%	46.17	17.41	979	11.74	0.96	7.7%
CITYGENINS	16.2	16.5	15.5	104193	1.68	▲	159%	0.99%	▲ 5.2%	53.51	12.28	1004	10.25	1.12	11.4%
CONTININS	20.1	20.5	19.0	5475	0.11	▲	361%	0.06%	▲ 6.3%	53.82	14.60	662	13.77	1.08	8.1%
DHAKAINS	21.7	22.6	21.3	18411	0.40	▲	23%	0.24%	▲ 1.9%	52.59	16.43	871	12.06	1.25	9.4%
EASTERNINS	27.7	28.8	27.1	2437	0.07	▼	-20%	0.04%	▲ 2.2%	48.01	25.11	1194	8.52	0.74	9.1%
EASTLAND	21.6	22.0	20.9	11463	0.25	▲	20%	0.14%	▲ 2.9%	50.16	19.87	1484	9.15	0.89	8.1%
FEDERALINS	10.6	10.9	10.0	231186	2.43	▲	52%	1.42%	▲ 6.0%	49.62	10.23	663	20.75	0.99	4.9%
GLOBALINS	13.5	14.3	13.1	19668	0.27	▲	117%	0.16%	▼ -0.7%	45.97	12.18	473	3.50	1.18	4.6%
GREENDELT	60.5	62.1	58.5	1945	0.12	▼	-90%	0.07%	▼ -2.7%	56.54	47.74	4882	18.06	0.82	4.2%
ISLAMIINS	28.2	28.6	26.6	55561	1.55	▲	4%	0.91%	▲ 2.5%	50.85	14.84	957	19.62	2.28	11.2%
JANATAINS	16.3	17.5	16.0	13908	0.23	▲	115%	0.14%	▲ 2.5%	43.98	12.30	625	20.63	1.22	3.8%
KARNAPHULI	15.8	16.0	15.4	5352	0.08	▲	249%	0.05%	▲ 3.9%	51.79	12.03	643	11.29	0.81	7.3%
MERCINS	21.3	22.3	21.2	166492	3.61	▲	132%	2.11%	▼ -3.2%	40.21	12.09	918	15.11	1.23	8.3%
NITOLINS	27.7	29.5	26.2	3750	0.11	▼	-97%	0.06%	▼ -16.1%	46.22	21.36	1114	11.36	1.48	13.8%
NORTHNRINS	21.4	21.9	21.0	41706	0.89	▲	336%	0.52%	▲ 0.0%	49.79	17.16	913	12.44	1.17	8.9%
PARAMOUNT	16.7	17.3	15.8	88177	1.48	▲	2102%	0.86%	▲ 5.0%	52.65	11.24	480	15.07	1.27	7.7%
PEOPLESINS	20.4	20.8	20.0	13208	0.27	▲	79%	0.16%	▼ -1.0%	50.31	14.04	942	8.19	0.89	10.9%
PHENIXINS	26.1	27.0	25.2	4412	0.12	▲	747%	0.07%	▲ 3.6%	49.90	23.62	1053	10.28	0.75	6.9%
PIONEERINS	28.2	28.8	27.0	7855	0.22	▲	81%	0.13%	▲ 5.6%	55.08	30.14	1973	10.11	0.89	8.7%
PRAGATIINS	26.9	27.0	25.7	13735	0.36	▲	29%	0.21%	▲ 5.5%	52.29	24.79	1570	9.86	0.51	4.5%
PRIMEINSUR	17.6	18.0	16.8	17431	0.30	▲	26%	0.18%	▲ 6.0%	54.84	14.62	719	8.11	1.07	13.5%
PROVATIINS	18.7	18.9	17.2	142336	2.56	▲	142%	1.50%	▲ 9.4%	70.51	12.98	555	10.60	1.20	11.3%
PURABIGEN	14.6	15.0	14.4	81118	1.19	▲	242%	0.70%	▲ 2.8%	47.98	12.38	721	11.11	1.37	10.5%
RELIANCINS	50.0	52.3	48.7	13770	0.70	▼	-11%	0.41%	▲ 1.0%	50.17	48.57	3950	9.47	0.90	9.7%
REPUBLIC	26.7	29.0	26.5	3825	0.10	▲	45%	0.06%	▼ -0.7%	40.13	13.83	935	14.80	2.02	13.5%
RUPALIINS	19.1	19.2	18.2	28085	0.53	▲	155%	0.31%	▲ 6.1%	58.53	16.41	1268	11.41	0.80	7.5%
SONARBAINS	16.2	16.2	15.2	21822	0.34	▲	142%	0.20%	▲ 5.9%	55.56	16.02	556	10.86	1.06	10.2%
STANDARINS	32.1	34.6	31.5	251488	8.36	▼	-49%	4.90%	▼ -3.9%	51.36	13.23	1044	15.82	1.86	6.7%
TAKAFULINS	25.6	26.8	24.0	22876	0.57	▼	-8%	0.33%	▼ -4.8%	48.87	15.80	970	13.47	1.60	12.3%
UNITEDINS	26.3	26.8	26.0	2542	0.07	▲	629%	0.04%	▲ 0.4%	44.45	23.40	1105	10.91	0.92	8.8%

Weekly Stock Market Report



Script	Weekly Market Statistics									Market Technical and Fundamental Indicators						
	Ticker	Close	High	Low	Avg Daily Volume	Avg Daily Turnover (BDTmn)	Δ III	% Of Sector Turnover	weekly Return	RSI****	EIVIA (10)*****	Final Ket Cap	P/E*	P/B**	ROE***	
Life Insurance																
DELTALIFE	114.1	115.0	104.9	163935	18.14	▲	21%	10.63%	▲	6%	73	96	14119.9	0.0	0	0
FAREASTLIF	76.9	77.7	72.2	110109	8.25	▲	108%	4.83%	▲	5%	68	64	5747.7	0.0	0	0
MEGHNALIFE	60.6	62.0	54.6	128688	7.66	▲	826%	4.49%	▲	10%	72	48	2031.4	0.0	0	0
NATLIFEINS	153.7	155.8	144.0	12214	1.85	▲	316%	1.08%	▲	5%	75	192	14504.2	0.0	0	0
PADMALIFE	44.2	45.3	39.9	528322	22.92	▲	393%	13.43%	▲	11%	61	29	1432.1	0.0	0	0
POPULARLIF	99.2	103.0	88.7	307053	29.11	▲	125%	17.06%	▲	11%	80	72	5994.5	0.0	0	0
PRAGATILIF	106.5	109.9	102.0	32250	3.43	▲	106%	2.01%	▲	2%	64	107	1104.7	0.0	0	0
PRIMELIFE	53.9	54.5	46.1	80521	4.07	▲	729%	2.39%	▲	18%	70	37	1645.0	0.0	0	0
PROGRESLIF	62.7	67.4	61.3	3536	0.23	▲	126%	0.13%	▲	2.8%	45	55	806.7	0.0	0	0
RUPALILIFE	54.3	57.6	46.3	711082	36.87	▲	1101%	21.60%	▲	17.5%	73	30	1506.2	0.0	0	0
SANDHANINS	29.6	30.5	27.5	173808	5.10	▲	178%	2.99%	▲	8.0%	64	35	2705.9	0.0	0	0
SUNLIFEINS	22.9	23.9	21.5	38148	0.85	▲	165%	0.50%	▲	6.5%	50	26	802.9	0.0	0	0
IT Sector																
AAMRATECH	31.7	32.9	30.6	355949	11.36	▲	2.20	4.51%	▲	4.3%	51.29	26.77	1755.2	16.42	1.40	6.8%
AAMRANET	103.6	104.0	94.4	1006132	99.98	▲	0.72	39.71%	▲	9.9%	72.11	26.77	5495.1	29.16	5.38	12.7%
AGNISYSL	22.2	22.7	20.8	956697	20.95	▲	2.13	8.32%	▲	7.2%	60.78	20.23	1534.0	20.78	1.55	6.9%
BDCOM	31.7	32.2	28.8	2598206	80.79	▲	5.94	32.08%	▲	9.3%	70.73	23.00	1474.8	22.52	2.18	9.9%
DAFODILCOM	36.8	39.8	33.2	556167	20.43	▲	4.10	8.11%	▲	12.9%	51.38	18.77	1836.8	15.57	2.79	16.9%
INTECH	19.2	20.3	18.6	796788	15.49	▲	1.45	6.15%	▲	4.3%	51.69	11.99	492.5	17.97	1.71	10.2%
ISNLTD	22.9	24.1	22.6	26286	0.61	▲	0.30	0.24%	▲	1.8%	44.02	12.31	250.1	0.00	1.65	-3.7%
ITC	31.7	33.5	29.9	68827	2.21	▲	3.08	0.88%	▲	8.6%	54.84	0.00	3298.4	27	2.03	6.6%
Miscellaneous																
AMANFEED	63.9	65.4	60.0	641760	40.79	▲	642%	12.09%	▲	6.1%	67.25	44.33	7422.6	12.54	2.58	20.3%
ARAMIT	349.7	353.5	338.0	2933	1.01	▼	-8%	0.30%	▲	3.6%	58.89	459.86	2098.2	38	2.26	5.5%
BERGERPBL	2123.7	2147.8	2100.1	58	0.12	▲	1%	0.04%	▲	0.8%	46.74	1930.59	49246.4	29.60	8.51	35.2%
BEXIMCO	28.7	28.9	24.5	7841585	210.85	▲	262%	62.50%	▲	18.1%	72.08	28.36	23952.7	21	0.40	1.7%
BSC	44.2	45.0	43.2	283989	12.55	▲	60%	3.72%	▲	1.6%	49.48	328.24	6742.0	89.36	0.81	1.1%
GOBALLPEN	79.2	80.0	76.7	22024	1.72	▲	79%	0.51%	▲	6.3%	52.30	61.24	707.1	81	0.49	1.1%
KBPPWBIL	16.9	17.0	16.0	661023	10.95	▲	141%	3.24%	▲	7.6%	57.10	21.48	1657.5	20.42	1.43	6.4%
MIRACLEIND	39.2	41.0	37.5	837975	32.95	▲	132%	9.77%	▲	6.2%	46.82	22.54	1148.7	31	0.90	2.9%
NFML	15.4	16.0	14.3	855911	13.06	▲	90%	3.87%	▲	8.5%	50.48	18.03	1242.9	15.34	1.22	8.3%
SAVAREFR	164.8	169.0	154.0	258	0.04	▼	-77%	0.01%	▲	3.6%	48.23	46.58	229.5	447	26.97	2.8%
SINOBANGLA	45.4	47.4	43.8	283489	12.90	▲	12%	3.82%	▲	4.8%	38.39	26.58	907.8	28.19	1.73	6.2%
ZEALBANGLA	60.5	64.0	53.5	7174	0.43	▼	-2%	0.13%	▲	13.9%	46.33	6.83	363.0	-	-0.27	26.8%
Pharmaceuticals & Chemicals																
ACI	406.7	408.5	396.7	65547	26.46	▲	89%	4.96%	▲	1.9%	52.58	526.17	19603.9	22	1.85	10.5%
ACIFORMULA	186.8	189.0	182.5	18428	3.40	▼	-52%	0.64%	▲	2.7%	52.32	174.12	8406.0	43.54	3.44	11.2%
ACMELAB	105.8	107.5	103.2	153767	16.06	▲	165%	3.01%	▲	3.2%	48.29	0.00	22387.5	16	1.97	12.7%
ACTIVEFINE	31.7	32.8	31.0	426399	13.60	▲	125%	2.55%	▲	3.6%	47.48	56.04	6338.3	9.34	1.62	18.3%
AFCAGRO	36.8	38.4	35.7	211401	7.82	▲	138%	1.47%	▲	5.7%	46.72	66.76	3351.7	12	2.53	22.2%
AMBEEPHA	411.0	419.9	380.0	13981	5.59	▲	142%	1.05%	▲	8.7%	56.13	252.53	986.4	128.84	16.28	12.1%
BEACONPHAR	20.1	20.6	19.3	302914	6.10	▲	107%	1.14%	▲	4.7%	58.42	14.68	4643.1	39	1.55	3.5%
BXPBARMA	109.0	109.3	103.5	811769	87.03	▲	254%	16.32%	▲	6.0%	65.35	75.61	44205.7	18.17	1.76	9.3%
BXSYNTH	11.5	12.4	10.9	235838	2.76	▲	73%	0.52%	▲	6.5%	49.21	8.09	997.2	-	0.56	-11.9%
CENTRALPHL	16.1	16.6	15.5	439281	7.09	▲	94%	1.33%	▲	5.9%	51.63	21.92	1836.9	32.02	1.06	6.5%
FARCHEM	17.0	17.1	15.9	504652	8.42	▲	147%	1.58%	▲	8.3%	53.36	30.74	3064.1	13	1.23	12.3%
GHCL	39.0	39.9	38.2	49694	1.95	▲	62%	0.37%	▲	5.1%	53.19	37.37	2808.0	33.91	0.72	2.0%
GLAXOSMITH	1494.1	1509.8	1442.0	191	0.28	▼	-70%	0.05%	▲	2.8%	48.88	1798.16	17998.6	27	6.96	25.8%
IBNSINA	245.8	254.5	244.6	136250	33.74	▲	53%	6.33%	▲	0.6%	47.30	150.72	7011.9	27.08	6.35	23.8%
IMAMBUTTON	33.5	35.7	32.2	10996	0.37	▼	-41%	0.07%	▲	6.7%	43.78	8.98	258.0	-	5.39	-5.9%
JMISMDL	182.5	184.1	177.3	54335	9.80	▲	101%	1.84%	▲	3.2%	56.92	155.76	2007.5	27.91	2.70	10.3%
KEYACOSMET	9.8	10.1	9.7	3882469	38.43	▲	16%	7.21%	▲	2.1%	43.81	14.28	9820.6	5	0.77	14.0%
KOHINOOR	378.0	385.0	365.0	4440	1.67	▲	9%	0.31%	▲	3.1%	54.27	342.06	5297.9	35.10	9.56	30.2%
LIBRAINFU	592.6	624.0	531.0	14450	8.44	▲	353%	1.58%	▲	10.3%	64.12	288.53	741.7	144	0.38	0.3%
MARICO	1201.9	1239.0	1185.0	576	0.69	▼	-60%	0.13%	▼	-1.0%	59.45	1500.74	37859.9	24.50	23.96	87.6%
ORIONINFU	54.2	55.4	53.0	93760	5.08	▲	207%	0.95%	▲	2.5%	52.69	49.37	1103.5	33	4.31	12.0%
ORIONPHARM	46.4	48.9	46.0	286873	13.71	▲	73%	2.57%	▼	-2.9%	43.10	34.22	10857.6	15.42	0.65	4.8%
PHARMAID	477.4	480.7	448.2	75539	35.12	▲	4%	6.59%	▲	2.8%	48.81	229.24	1489.5	38	9.64	20.4%
RECKITT BEN	1919.3	1984.0	1832.5	1991	3.76	▼	-68%	0.70%	▲	0.7%	61.24	1580.74	9068.7	26.45	38.37	134.0%
RENATA	1248.7	1259.9	1239.2	3507	4.37	▼	-90%	0.82%	▲	1.2%	50.48	1220.37	87447.7	31	6.76	22.4%
SALVOCHEM	25.9	26.1	24.6	2647597	67.27	▼	-5%	12.61%	▲	0.8%	63.19	13.38	1603.9	37.43	2.28	6.9%
SOURPHARMA	315.2	316.2	310.9	266930	83.86	▼	-25%	15.73%	▲	1.7%	52.29	249.04	232425.7	20	4.74	23.8%
WATACHEM	344.6	348.5	319.0	120690	40.37	▼	-2%	7.57%	▲	0.3%	70.21	150.68	3143.3	96.09	4.66	5.4%

Weekly Stock Market Report

Sectorwise Traded Script

Ticker	Weekly Market Statistics								Market Technical and Fundamental Indicators							
	Close	High	Low	Avg Daily Volume	Avg Daily Turnover (BDTmn)	Δ in Turnover	% of Sector Turnover	Weekly Return	RSI****	EMA (10)*****	Market Cap	Trading P/E*	P/B**	ROE***		
Service&RealEstate																
EHL	48.5	49.7	47.8	82212	3.99	▲	106%	13.70%	▲	3%	53.70	34.06	4527	17.14	3.05	15.5%
SAIFPOWER	27.3	27.8	25.9	642771	17.50	▲	52%	60.09%	▲	7%	49.82	71.78	3175	19.64	0	0
SAMORITA	75.5	76.8	72.3	47396	3.55	▲	112%	12.19%	▲	5%	48.66	76.70	1357	37.33	1.75	8.0%
SAPORTL	30.0	31.1	28.9	135125	4.08	▲	60%	14.01%	▲	6%	48.84	55.12	6802	49.18	1.20	2.6%
Tannery																
APEXFOOT	322.6	326.5	320.3	8090	2.61	▼	-50%	3.01%	▲	0%	50.53	334.38	3629	11.15	1.42	3.3%
APEXTANRY	144.1	145.0	138.3	43733	6.16	▲	183%	7.10%	▲	4%	54.03	114.19	2196	94.80	1.96	4.0%
BATASHOE	1162.4	1189.1	1155.3	650	0.76	▼	-8%	0.87%	▼	-2%	46.58	1326.22	15902	13.66	4.47	32.0%
FORTUNE	32.3	33.3	31.4	1818679	58.91	▲	107%	67.89%	▲	4%	48.11	0.00	3509	17.48	0	0
LEGACYFOOT	58.4	60.3	55.9	308546	17.93	▲	92%	20.66%	▲	6%	50.60	25.79	664	0.00	8.04	3.5%
SAMATALETH	58.3	61.5	58.0	6900	0.41	▲	13%	0.47%	▲	0%	39.44	23.02	602	0.00	3.95	-1.1%
Telecommunication																
GP	477.1	483.9	464.9	124304	59.16	▼	-54%	92.57%	▲	3%	49.91	253.07	644228	23.49	19.19	85.4%
BSCCL	97.5	98.9	92.4	49230	4.75	▲	156%	7.43%	▲	6%	58.33	103.56	16078	73.86	2.68	5.5%
Travel&Leisure																
PENINSULA	21.8	22.6	19.7	569763	12.38	▲	174%	9.25%	▲	8%	57.54	16.91	2587	114.74	0.71	1.7%
UNITEDAIR	4.9	5.0	4.7	538704	2.61	▲	25%	1.95%	▲	2%	49.90	8.87	3368	0.00	0.50	-16.3%
UNIQUEHRL	61.9	63.3	58.6	1933838	118.78	▲	239%	88.79%	▲	5%	60.06	45.32	18223	30.05	0.70	2.0%
Jute																
JUTESPINN	160.0	165.0	156.1	1557	0.25	▲	31%	1.95%	▲	6%	46.89	48.34	272	0.00	-0.81	28.7%
NORTHERN	439.2	458.0	411.0	18856	8.30	▼	-10%	64.90%	▼	0%	50.89	256.61	941	325.41	5.79	5.8%
SONALIANSH	216.9	217.9	207.0	19891	4.24	▲	263%	33.16%	▲	5%	58.28	124.26	588	143.64	0.97	0.7%
Textile																
AL-HAJTEX	83.9	85.1	81.1	43750	3.64	▲	112%	0.71%	▲	5%	52.72	102.83	1701	66.06	6.79	13.4%
ALLTEX	11.4	12.0	11.3	44847	0.52	▲	98%	0.10%	▲	1%	44.01	20.53	638	0.00	0.45	-8.0%
ANLIMAYARN	31.0	32.0	30.6	103433	3.24	▲	129%	0.63%	▲	2%	50.36	19.33	554	73.81	2.81	5.0%
APEXSPINN	126.0	127.9	117.2	91121	11.19	▲	202%	2.18%	▲	9%	52.56	74.10	1058	44.68	2.39	5.3%
ARGONDENIM	27.4	27.5	25.0	380223	10.18	▲	86%	1.98%	▲	10%	55.59	24.01	3287	8.49	1.12	12.4%
ALIF	12.1	12.4	11.4	5234710	62.48	▲	84%	12.15%	▲	7%	48.48	12.89	1324	6.05	0.71	11.8%
CNATEX	7.6	7.9	7.5	367275	2.82	▲	35%	0.55%	▲	1%	39.59	11.60	1819	13.19	0.50	7.0%
DACCADYE	8.6	9.1	8.6	93438	0.82	▲	54%	0.16%	▼	-2%	41.01	14.14	750	0.00	0.56	-22.9%
DELTA SPINN	9.0	9.3	8.8	593066	5.34	▲	50%	1.04%	▲	2%	52.92	9.54	1498	41.08	0.69	2.0%
DSHGARME	221.6	223.0	208.6	22519	4.89	▲	113%	0.95%	▲	7%	54.94	131.08	1340	43.47	14.47	44.6%
DSSL	21.0	21.2	19.5	2955611	60.73	▲	222%	11.81%	▲	7%	65.67	0.00	2777	15.82	2.46	13.5%
DULAMIACOT	45.0	50.0	44.0	7808	0.37	▼	-40%	0.07%	▲	2%	48.32	7.03	340	0.00	4.49	-37.4%
ENVOYTEX	31.5	32.3	30.6	50199	1.59	▼	-22%	0.31%	▲	4%	49.16	46.38	5180	15.19	0.86	5.4%
ETL	14.9	15.2	14.0	611596	9.02	▲	103%	1.75%	▲	7%	52.42	0.00	2360	11.97	1.11	8.8%
FAMILYTEX	7.0	7.1	6.8	673130	4.69	▲	54%	0.91%	▲	4%	50.20	11.17	2249	0.00	0.54	0.0%
FEKDIL	17.2	17.6	16.2	332748	5.67	▲	186%	1.10%	▲	6%	55.87	23.12	3194	8.90	0.94	10.6%
GENNEXT	8.8	9.1	8.5	2219565	19.68	▲	72%	3.83%	▲	5%	47.74	9.34	3960	10.15	0.76	4.7%
HFL	24.8	26.4	24.4	149532	3.75	▲	200%	0.73%	▲	2%	46.93	21.07	2258	20.50	0.65	2.1%
HRTEX	33.5	34.5	32.2	357002	11.86	▲	69%	2.31%	▲	3%	54.56	21.56	848	19.94	2.29	9.9%
HWAWELLTEX	37.4	38.6	37.0	5269	0.20	▼	-83%	0.04%	▼	-1%	46.21	29.11	2094	16.70	1.33	7.5%
MAKSONSPIN	9.5	9.9	9.2	1663607	15.92	▲	215%	3.10%	▲	4%	47.66	8.19	2263	26.22	0.51	1.7%
MALEKSPIN	19.2	19.3	18.8	40352	0.77	▼	-32%	0.15%	▲	1%	53.66	16.26	3717	12.97	0.42	3.4%
MATINSPINN	37.7	38.2	36.5	5057	0.19	▼	-68%	0.04%	▲	1%	46.57	39.42	3675	18.76	0.90	6.4%
METROSPIN	11.7	12.3	11.4	846058	9.99	▲	65%	1.94%	▲	3%	45.53	9.11	708	0.00	0.74	-4.0%
MHSML	16.1	16.6	15.5	155104	2.50	▲	168%	0.49%	▲	7%	52.00	28.59	1518	16.63	0.96	9.9%
MITHUNKNIT	27.1	27.9	26.8	17826	0.49	▼	-22%	0.09%	▲	1%	46.51	73.83	881	0.00	1.23	0
MODERN DYE	240.3	249.7	226.1	936	0.23	▲	60%	0.04%	▲	3%	53.81	122.02	329	198.60	50.69	21.5%
NURANI	16.0	16.3	15.0	1418608	22.42	▲	213%	4.36%	▲	8%	51.51	0.00	1461	8.86	1.38	11.7%
PDL	16.3	16.6	14.9	425234	6.72	▲	140%	1.31%	▲	12%	57.79	0.00	2072	8.38	1.07	13.8%
PTL	44.5	44.9	41.7	524990	22.47	▲	51%	4.37%	▲	6%	58.13	16.03	5743	24.27	2.33	9.4%
PRIMETEX	24.0	24.4	23.4	81448	1.95	▲	83%	0.38%	▲	4%	49.77	15.09	917	22.86	0.50	2.2%
QUEENSOUTH	27.6	29.6	27.4	1113835	31.54	▼	-42%	6.13%	▲	2%	34.14	0.00	2764	36.80	1.89	0.0%
RAHIMTEXT	247.0	249.6	232.0	21821	5.31	▲	36%	1.03%	▲	7%	54.17	223.20	1931	48.68	6.92	17.5%
REGENTTEX	18.4	18.7	15.8	909229	15.87	▲	460%	3.09%	▲	19%	66.76	0.00	2125	15.08	0.61	4.0%
RNSPIN	13.5	13.8	12.5	618023	8.27	▲	76%	1.61%	▲	9%	51.21	21.44	4015	11.49	0.63	3.9%
SAFKOSPINN	16.5	17.1	16.2	173750	2.88	▼	-16%	0.56%	▲	3%	45.48	17.04	480	33.57	0.95	2.1%
SAIHAMCOT	16.5	16.9	15.1	464366	7.47	▲	632%	1.45%	▲	10%	64.97	14.48	2455	18.13	0.72	4.7%
SAIHAMTEX	21.1	21.4	20.6	439061	9.26	▲	51%	1.80%	▲	1%	60.10	15.08	1911	22.21	0.78	3.8%
SHASHADNIM	58.2	60.0	49.2	759603	42.59	▲	344%	8.28%	▲	22%	65.27	36.73	6958	11.97	1.30	11.3%

Weekly Stock Market Report

Sectorwise Traded Script

Weekly Market Statistics										Market Technique						
Ticker	Close	High	Low	Avg Daily Volume	Avg Daily Turnover (BDTmn)	Δ in Turnover	% of Sector	Weekly Return	RSI****	EMA (10)****	Market Cap	Trailing P/E*	P/B**	ROE***		
Textile																
SIMTEX	28.8	29.8	28.1	226958	6.54	▲ 128%	1.26%	▲ 2%	55.88	0.00	1898	12.38	1.33	10.8%		
SONARGAOI	18.5	20.5	18.0	61036	1.19	▲ 31%	0.23%	▼ -3%	39.25	8.56	490	0.00	0.64	-3.6%		
SQUARETEX	54.3	55.1	52.1	65854	3.56	▲ 73%	0.68%	▲ 5%	49.25	73.22	10201	30.45	1.39	5.6%		
TALLUSPIN	9.8	10.1	9.6	128599	1.27	▲ 271%	0.24%	▲ 0%	39.74	19.36	875	0.00	0.75	-2.1%		
TOSRIFA	21.9	22.5	21.3	212128	4.64	▲ 186%	0.89%	▲ 4%	53.22	18.00	1383	19.38	0.66	4.0%		
TUNGHAI	8.9	9.4	8.8	171522	1.54	▲ 90%	0.30%	▲ 0%	41.13	12.11	949	10.63	0.74	9.4%		
ZAHEENSPIN	13.6	15.4	13.2	4750115	68.53	▲ 204%	13.16%	▼ -6%	58.99	19.34	1340	10.76	1.11	10.4%		
ZAHINTEX	14.9	15.0	14.5	267274	3.95	▲ 153%	0.76%	▲ 4%	51.82	20.41	1219	20.67	0.61	2.8%		

Weekly Stock Market Report

Latest Corporate Declarations

Ticker	Declared Dividend	EPS	NAV	Cash Flow	Record Date
SINGERBD	100%C	9.79	28.17	5.17	09.04.18
UCB	10%C	2.58	25.49	2.04	11.04.18
MERCANBANK	17%C 5%B	3.89	22.74	3.72	15.04.18
UNITEDIN	11%C	2.41	29.97	1.07	15.04.18
BRACBANK	25% B	6.07	31.10	24.99	11.04.18
LHBL	10%C	0.69	13.15	1.12	08.04.18
TAKAFULINS	5%C 6%B	1.90	17.49	0.59	23.04.18
NHFIL	19%C	2.40	15.98	19.84	09.04.18
FASFIN	10%B	1.10	14.67	8.01	19.04.18
PUBALIBANK	10%B	1.89	27.12	1.57	19.04.18
PREMIERBAN	15%B	2.83	18.91	3.58	25.04.18
STANDBANKL	10%B	1.56	16.94	0.84	25.04.18

Right Offers

Ticker	Right Proposal	Record Date	Premium
SOUTHEASTB	1R:2	Proposed	Par
ZAHEENSPIN	1R:1	Approved	Par
RSRMSTEEL	2R:3	Proposed	15.00
IPDC	1R:2	Proposed	3.00

Weekly Block Transactions

Instr Code	Max Price	Min Price	Trades	Quantity	Value(In mn)
DELTALIFE	118.20	118.20	1.00	658586.00	77.85
SEMLIBLSF	6.90	6.90	1.00	73100.00	0.50
RENATA	1266.50	1253.60	5.00	144550.00	181.40
AMANFEED	62.30	60.90	4.00	350000.00	21.52
APEXFOODS	208.00	207.00	4.00	46000.00	9.54
GP	480.00	475.00	10.00	1145926.00	547.63
HRTEX	32.20	32.20	1.00	20000.00	0.64
LRGLOBMF1	8.10	8.10	1.00	400000.00	3.24
MAKSONSPIN	9.20	9.20	2.00	1110403.00	10.22
PTL	42.10	42.10	2.00	90000.00	3.79
UCB	20.20	20.20	2.00	4745000.00	95.85
AAMRANET	99.00	96.00	2.00	59500.00	5.86
ACI	408.00	402.00	3.00	210000.00	85.62
OAL	17.00	17.00	1.00	30400.00	0.52
PARAMOUNT	17.30	17.30	1.00	32000.00	0.55
SQURPHARMA	316.00	312.80	19.00	1406400.00	441.36
BATBC	3390.00	3390.00	1.00	500.00	1.70
BRACBANK	102.50	101.00	3.00	600000.00	61.35
EBL	42.00	42.00	4.00	2000000.00	84.00
IBNSINA	250.00	250.00	3.00	15000.00	3.75
MERCANBANK	22.60	22.60	1.00	112224.00	2.54
CONFIDCEM	160.00	157.50	7.00	128000.00	20.26
CITYBANK	42.70	42.60	2.00	568059.00	24.25
GRAMEENS2	16.50	16.50	1.00	200000.00	3.30
IDLC	73.00	73.00	1.00	500000.00	36.50
ILFSL	20.30	20.30	1.00	51000.00	1.04
ISLAMIBANK	28.50	28.50	1.00	100000.00	2.85
POPULARLIF	102.00	99.00	2.00	323000.00	32.05
STYLECRAFT	1600.00	1560.00	5.00	5050.00	7.91

Weekly Stock Market Report



LBSL's Research Reports are also available on
Bloomberg LANB <GO>
lankabangla.duinvest.com

Disclaimers

This document ("the Report") is published by LankaBangla Securities Ltd ("LBSL") for information only of its clients. All information and analysis in this Report have been compiled from and analyzed on the basis of LBSL's own research of publicly available documentation and information. LBSL has prepared the Report solely for informational purposes and consistent with Rules and regulations of SEC. The information provided in the Report is not intended to, and does not encompass all the factors to be considered in a best execution analysis and related order routing determinations. LBSL does not represent, warrant, or guarantee that the Report is accurate. LBSL disclaims liability for any direct, indirect, punitive, special, consequential, or incidental damages related to the Reports or the use of the Report. The information and analysis provided in the Report may be impacted by market data system outages or errors, both internal and external, and affected by frequent movement of market and events. Certain assumptions have been made in preparing the Report, and changes to the assumptions may have a material impact on results. The Report does not endorse or recommend any particular security or market participant. LBSL, its analysts and officers confirm that they have not received and will not receive any direct or indirect compensation in exchange for expressing any specific recommendation, opinion or views in its Report. The information and data provided herein is the exclusive property of LBSL and cannot be redistributed in any form or manner without the prior written consent of LBSL. This disclaimer applies to the Report in their entirety, irrespective of whether the Report is used or viewed in whole or in part.

LBSL Capital Market Research Department

Analyst	Designation	E-mail
Salma Yeasmin Xinat	Senior Research Associate	salma@lbsbd.com
Ahmed Irtiza	Senior Research Associate	ahmed.irtiza@lbsbd.com
Quazi Naureen Ahmed	Research Associate	naureen.quazi@lbsbd.com
Mashqurur Rahman	Research Associate	mashqurur.rahman@lbsbd.com

Institutional & Foreign Trade Department

Rehan Muhammad Head of Institutional & Foreign Trade rehan@lbsbd.com/rmuhammad1@bloomberg.net

LankaBangla Securities Limited

Capital Market Research Department

Corporate Office

A.A. Bhaban (Level-5)

23 Motijheel C/A

research@lbsbd.com

Dhaka-1000, Bangladesh

Phone: +880-2-9513794 (Ext-122)

Fax: +880-2-9563902

Website: www.lbsbd.com