

Weekly Stock Market Report

Thursday, February 22, 2018

Broad Market Measurement

	22-Feb-18	15-Feb-18	% Change
Trailing P/E	17.10	17.50	▼ -2.29%
Annualized P/E	18.09	18.53	▼ -2.38%
Price/ NAV	2.26	2.31	▼ -2.16%
Dividend Yield	3.35%	3.29%	▲ 1.85%
Market RSI	36.16	46.57	▼ -22.4%

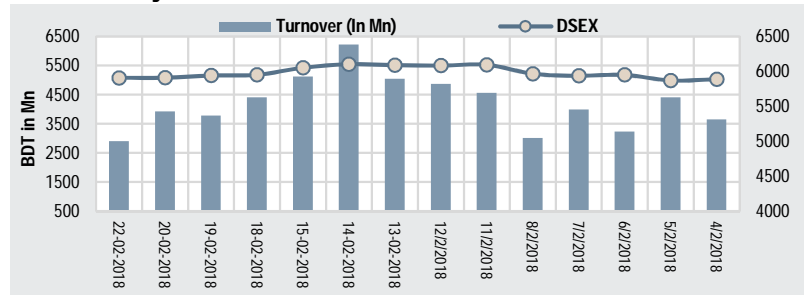
Economic Update

	15-Feb-18	8-Feb-18	% Change
Forex Reserve(mn \$)	33003.51	32769.38	▲ 0.7%
Call Money Rate	4.03	3.94	▲ 2.3%
Dollar Exchange Rate	82.90	82.90	▲ 0.0%
Euro Exchange	116.09	115.10	▲ 0.9%
Pound Exchange Rate	103.25	101.69	▲ 1.5%

Market Breadth

Losers	275.00
Unchanged	8.00
Gainers	55.00

DSE Weekly Overview



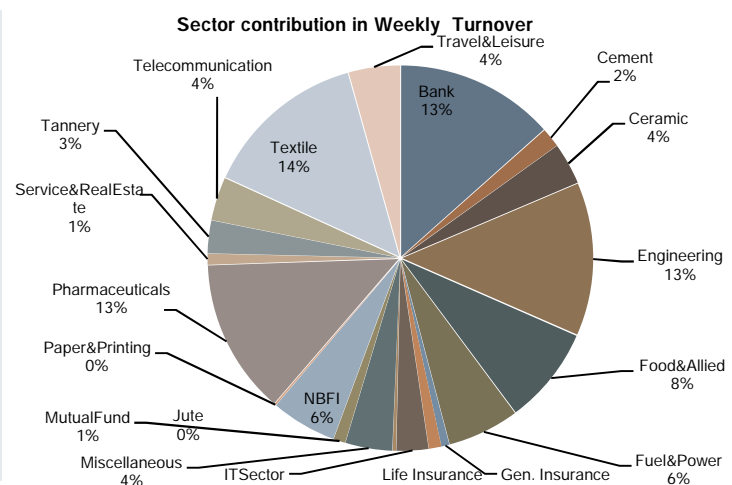
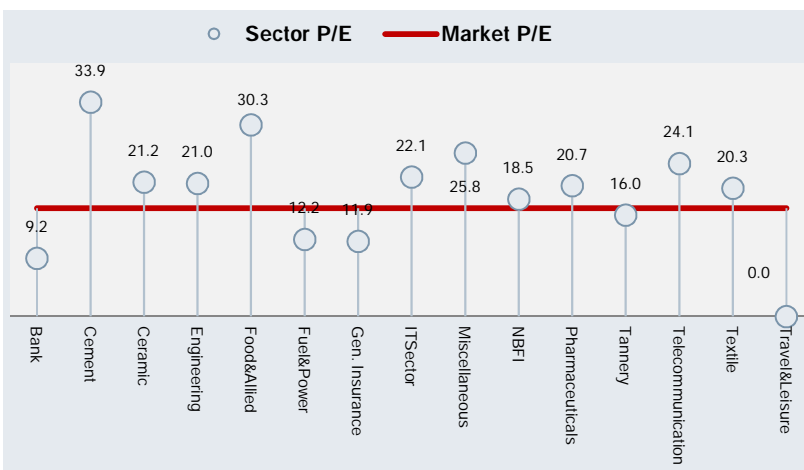
Index	Close	Open	% Change	Point Change
DSEX	5906.98	6050.20	▼ -2.4%	▼ -143.22
DS30	2170.25	2230.93	▼ -2.7%	▼ -60.67

Market Activities Summary

	This Week	Prev. Week	% Change
Avg. Daily Turnover (BDT mn)	3746.25	5158.26	▼ -27.4%
Avg. Daily Turnover (USD mn)	46.49	64.01	▼ -27.4%
Total No of Trade	401565	603211	▼ -33.4%
Avg. Trade Volume	101887608	144624035	▼ -29.6%

Weekly Sector Overview

Listed Company	Trailing P/E	P/B	Average Daily Turnover BDT (mn)	% Δ in Turnover	Average Volume	% Change in volume	Sector Capitalization (BDT In Mn)	Weekly Return	
Bank	30.0	9.2	1.20	502.41	▼ -34%	18770041	▼ -34%	660397.50	▼ -2.72%
Cement	7.0	33.9	3.26	61.82	▼ -41%	728224	▼ -27%	120309.81	▼ -1.20%
Ceramic	5.0	21.2	1.89	131.13	▼ -28%	3105923	▼ -12%	26227.21	▼ -10.73%
Engineering	36.0	21.0	1.98	485.13	▼ -34%	8004299	▼ -38%	192558.63	▼ -3.06%
Food&Allied	18.0	30.3	17.89	308.42	▲ 2%	7901194	▲ 14%	297750.34	▲ 0.98%
Fuel&Power	18.0	12.2	1.52	227.56	▲ 15%	2374610	▼ -22%	363123.12	▼ -0.08%
Gen. Insurance	35.0	11.9	1.00	25.02	▼ -23%	1166359	▼ -21%	40580.26	▼ -1.37%
Life Insurance	12.0	N/M*	0.00	39.62	▼ -47%	770881	▼ -42%	48216.00	▼ -0.93%
ITSector	8.0	22.1	2.29	101.51	▼ -32%	3991299	▼ -20%	15282.98	▼ -3.50%
Jute	3.0	-36.4	4.29	11.11	▼ -14%	43064	▼ -1%	1872.61	▼ -1.31%
Miscellaneous	12.0	25.8	1.15	148.04	▼ -29%	3389262	▼ -28%	9651.87	▼ -0.33%
MutualFund	36.0	N/M*	0.00	37.74	▼ -14%	4105844	▼ -22%	41346.25	▼ -1.48%
NBFI	23.0	18.5	2.23	207.80	▼ -44%	6537116	▼ -39%	222891.71	▼ -3.40%
Paper&Printing	2.0	-14.4	1.21	5.55	▼ -73%	361919	▼ -72%	2048.31	▼ -7.28%
Pharmaceuticals	28.0	20.7	3.24	490.40	▼ -22%	10067719	▼ -34%	548964.01	▼ -1.88%
Service&RealEstate	4.0	26.6	2.01	35.26	▼ -15%	1047277	▼ -1%	15988.55	▼ -4.00%
Tannery	6.0	16.0	3.67	103.45	▼ -12%	1838983	▼ -19%	27386.75	▼ -0.37%
Telecommunication	2.0	24.1	16.85	137.30	▼ -9%	345917	▼ -17%	667054.82	▼ -4.64%
Textile	49.0	20.3	1.00	516.98	▼ -20%	24624451	▼ -24%	111974.47	▼ -3.18%
Travel&Leisure	4.0	-25.3	0.70	162.60	▲ 34%	3048266	▼ -2%	26224.97	▼ -1.33%



Weekly Observation

Index back to bearish trend with -140 point lost over the week

The benchmark DSEX index lost ~143 points, a 2.37% loss over the last trading week. This marks a return to a larger negative trend of the market. Index had only returned to positive trend in the preceding week after two consecutive weeks of index loss. All four trading days of this week closed in the red. The week opened with a massive ~99 points (1.64%) loss, and then continued with smaller index losses through the rest of the week. Market participation has decreased significantly with BDT 3.75 billion average turnover throughout the week (27.4% lower compared to turnover level of previous week). Only Food & Allied sector posted a week positive return (+0.98%) while Telecommunications, NBFI and Textile sectors registered the highest losses with -4.64%, -3.40% and -3.18% index returns respectively, among the large cap sectors. Small cap stocks seem to be taking the highest impact of the market's downward trend. Average Trade Volume increased by 29.6% whereas total number of trades decreased by 33.4%. Only 8 stocks gave positive returns over the week while 255 stocks were in the red and market cap of 55 stocks remained the same.

Among the economic issues The central bank has extended the deadline for the banks to adjust their Advance Deposit ratios to December 31, 2018. On January 30th, Bangladesh Bank had issued a directive to bring down Advance Deposit Ratio (ADR) to maximum 83.5% from existing 85.0% for conventional banks; and 89.0% for Islamic Banks from existing 90.0%, with the banks being given until June 30, 2018 to make the necessary adjustments. This additional six months would be welcome for the banking sector as the regulatory change brought about rapid upward movement of interest rates. The board of directors of Dhaka Stock Exchange (DSE) has 'reconfirmed' its previous decision favoring the proposal of a Chinese consortium to become the strategic partner of the premier bourse. There had been some talks of local regulators preferring a lower priced bid from an Indian consortium. Also, three telco operators: Grameenphone, Robi, and Banglalink have started 4G service in selected areas immediately after receiving the licence for the fourth-generation mobile internet

Top gaining stocks of the week were APEXSPINN (+14.09%), CVOPRL (+13.00%) and RENWICKJA (+9.58%). Conversely, top losing stocks were BANGAS (-16.55%), SAVAREFR (-15.41%), and BXSYNTH (-14.47%). UNIQUEHRL topped the weekly turnover list followed by GP, SQRPHARMA, CVOPRL, FUWANGFOOD, and LANKABAFIN

-Debashish Sutradhar

Weekly Top Performer

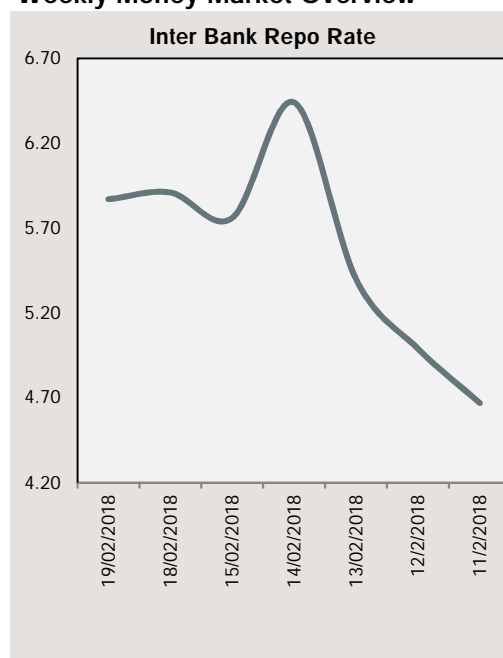
Turnover Leaders			
Company	Closing Price	% Δ	Avg. Daily Turnover (mn)
UNIQUEHRL	62.30	-1.0%	157.40
GP	482.00	-4.8%	133.03
SQRPHARMA	317.80	-1.9%	107.42
CVOPRL	232.90	13.0%	102.91
FUWANGFOOD	20.10	-2.9%	94.31
LANKABAFIN	37.40	-3.6%	86.12
BRACBANK	93.00	-4.3%	82.52
MONNOCERA	135.70	-0.9%	71.72
AIL	105.00	-4.2%	69.44
BXPHERMA	106.40	-3.1%	67.35

Top Gainers/Least Losers			
Company	Closing Price	% Δ	Avg. Daily Turnover (mn)
APEXSPINN	135.20	14.09%	31.57
2 CVOPRL	232.90	13.00%	102.91
3 RENWICKJA	631.20	9.58%	6.35
4 AMBEEPHA	446.50	9.14%	12.63
5 APEXFOODS	189.50	8.91%	48.42
6 FINEFOODS	41.40	7.53%	63.57
7 KAY&QUE	152.60	7.31%	4.29
8 PHARMAID	532.40	7.04%	63.92
9 LEGACYFOOT	64.60	5.73%	54.87
# PADMALIFE	43.80	5.29%	15.71

Market Cap Leaders			
Company	Closing Price	% Δ	Avg. Daily Turnover (mn)
GP	482.00	-4.8%	133.03
SQRPHARMA	317.80	-1.9%	107.42
BATBC	3685.50	2.3%	0.75
ICB	142.30	-3.5%	5.61
RENATA	1260.00	-0.3%	6.01
BRACBANK	93.00	-4.3%	82.52
LAFSURCEML	56.90	-1.7%	30.28
UPGDCL	161.10	5.0%	20.92
ISLAMIBANK	32.80	-1.2%	20.40
OLYMPIC	262.10	-2.2%	21.62

Top Losers/Least Gainers			
Company	Closing Price	% Δ	Avg. Daily Turnover (mn)
# BANGAS	235.40	-16.55%	12.05
# SAVAREFR	158.10	-15.41%	0.40
# BXSYNTH	13.00	-14.47%	6.13
# RAKCERAMIC	48.40	-14.18%	15.48
# MEGCONMILK	31.60	-11.98%	3.11
# MIDASFIN	37.00	-11.69%	2.68
# MEGHNAPET	26.20	-10.88%	1.90
# FASFIN	16.40	-10.87%	7.53
# DHAKAINS	20.40	-10.53%	0.83
# KPPL	12.80	-10.49%	4.70

Weekly Money Market Overview



Source: Bangladesh Bank

Weekly Stock Market Report

Sectorwise Traded Scripts

Ticker	Weekly Market Statistics									Market Technical and Fundamental Indicators					
	Close	High	Low	Avg Daily Volume	Avg Daily Turnover (BDTmn)	Δ In Turnover	% of Sector Turnover	Return	RSI****	EV/EA (10)*****	Market Cap	P/E*	P/B**	ROE***	
Bank															
ABBANK	17.9	19	17.8	1118891	20.26	▼ -37%	4.03%	▼ -4.8%	34.19	20.32	22618	27.77	0.93	6%	
ALARABANK	24.3	24	24	1202438	28.90	▲ 25%	5.75%	▲ 0.8%	54.13	14.30	24162	7.69	1.23	16%	
BANKASIA	22.1	23	21.9	210305	4.65	▼ -53%	0.93%	▼ -1.8%	47.83	16.21	21813	9.16	1.15	9%	
BRACBANK	93.0	97	91	885165	82.52	▼ -36%	16.42%	▼ -4.3%	41.78	48.86	79535	17.09	3.57	18%	
CITYBANK	40.0	43	39.8	1377930	56.38	▼ -26%	11.22%	▼ -7.2%	27.55	20.06	35032	8.08	1.43	17%	
DHAKABANK	17.8	19	18	1070429	19.25	▼ -42%	3.83%	▼ -4.3%	23.42	19.02	12857	8.63	0.86	11%	
DUTCHBANGL	141.9	152	139.9	140680	20.56	▼ -18%	4.09%	▼ -2.2%	46.69	102.91	28380	12.41	1.61	10%	
EBL	41.5	43	41	158464	6.61	▼ -59%	1.32%	▼ -4.6%	35.19	27.99	30627	10.05	1.47	13%	
EXIMBANK	15.2	16	15.0	756720	11.49	▼ -49%	2.29%	▼ -1.9%	37.83	8.63	21466	6.20	0.81	12%	
FIRSTSBANK	13.5	14	13	499145	6.78	▼ -36%	1.35%	▼ -2.9%	36.60	8.77	9623	8.41	0.89	14%	
ICBIBANK	6.0	6	6.0	163715	0.99	▼ -53%	0.20%	▼ -1.6%	38.63	4.41	3988	0.00	-0.40	3%	
IFIC	16.3	17	16	681703	11.24	▼ -52%	2.24%	▼ -2.4%	38.91	20.99	10293	7.90	0.83	12%	
ISLAMIBANK	32.8	34	32.5	622996	20.40	▼ -26%	4.06%	▼ -1.2%	38.69	27.97	52808	14.39	1.08	9%	
JAMUNABANK	20.3	21	20	173418	3.54	▼ -43%	0.70%	▼ -2.4%	45.28	11.80	12467	5.94	0.79	11%	
MERCANBANK	23.5	24	23.3	1422239	33.53	▼ -61%	6.67%	▼ -3.3%	43.93	9.68	17370	5.65	1.03	14%	
MTB	32.7	33	32	50523	1.63	▲ 35%	0.32%	▲ 1.9%	47.60	19.09	16666	17.00	1.70	16%	
NBL	12.7	13	12.6	2113433	26.88	▼ -40%	5.35%	▼ -1.6%	44.73	9.30	30105	5.74	0.83	16%	
NCCBANK	16.7	17	17	345267	5.76	▼ -37%	1.15%	▼ -1.2%	43.02	9.04	14750	6.16	0.89	13%	
ONEBANKLTD	21.8	23	21.6	422820	9.24	▼ -54%	1.84%	▼ -3.5%	44.98	14.59	15915	5.24	1.27	21%	
PRIMEBANK	21.9	23	21	493495	10.65	▲ 17%	2.12%	▼ -3.5%	38.33	18.96	22543	6.58	0.89	8%	
PREMIERBAN	13.5	14	13.3	1035230	14.08	▼ -14%	2.80%	▼ -4.9%	33.93	8.19	9392	3.98	0.88	14%	
PUBALIBANK	28.1	29	28	126651	3.56	▼ -25%	0.71%	▼ -1.4%	44.66	20.63	25975	14.18	1.06	6%	
RUPALIBANK	56.4	58	55.2	280132	15.77	▼ -31%	3.14%	▼ -2.1%	43.75	39.81	16347	11.14	1.27	-10%	
SHAHJABANK	31.2	32	30	954429	29.54	▲ 66%	5.88%	▲ 0.6%	53.35	12.30	22922	12.79	1.76	13%	
SIBL	22.1	23	22.0	229626	5.09	▼ -2%	1.01%	▼ -2.6%	40.06	13.09	16316	7.22	1.15	17%	
SOUTHEASTB	19.9	20	20	446814	8.92	▼ -37%	1.78%	▼ -2.0%	40.08	16.88	18247	7.24	0.69	9%	
STANDBANKL	13.5	14	13.4	512992	6.95	▼ -61%	1.38%	▼ -1.5%	32.58	9.22	10689	9.40	0.85	9%	
TRUSTBANK	41.4	42	39	243215	10.07	▼ -27%	2.00%	▼ -1.2%	55.05	23.04	23058	10.63	2.00	19%	
UTTARABANK	31.0	33	30.6	526205	16.53	▼ -31%	3.29%	▼ -7.5%	44.54	21.47	12402	8.01	0.92	12%	
UCB	20.9	21	21	504977	10.62	▼ -26%	2.11%	▼ -2.3%	40.45	20.70	22031	6.90	0.85	10%	

Cement

ARAMITCEM	29.8	31.4	29.4	17035	0.51	▼ -23%	0.82%	▼ -2.6%	47.16	36.32	1010	0.00	2.67	-23%
CONFIDCEM	166.2	167.0	163.3	154072	25.39	▼ -61%	41.07%	▲ 0.4%	61.03	83.61	8974	18.82	2.70	16%
HEIDELCEM	396.7	401.0	396.0	10928	4.36	▲ 16%	7.05%	▼ -1.2%	35.03	588.06	22415	22.85	4.01	27%
LAFSURCEML	56.9	58.0	56.7	530533	30.28	▼ -4%	48.98%	▼ -1.7%	34.18	83.29	66082	49.05	4.30	15%
MEGHNACEM	96.0	99.0	95.4	3927	0.38	▼ -65%	0.61%	▼ -1.9%	36.58	99.16	2160	31.27	2.62	8%
MICEMENT	78.7	78.9	76.4	5516	0.43	▼ -41%	0.69%	▲ 1.9%	44.58	68.40	11687	26.50	1.65	10%
PREMIERCEM	75.7	79.9	75.6	6213	0.47	▼ -59%	0.77%	▼ -2.7%	32.28	78.83	7983	19.87	1.86	13%

Ceramic

FUWANGCER	17.1	18.8	16.9	2147160	38.66	▲ 19%	29.48%	▼ -4.5%	53.54	11.58	2118	24.96	1.90	7%
MONNOCERA	135.7	142.0	131.5	522193	71.72	▼ -42%	54.69%	▼ -0.9%	70.56	34.72	3409	79.85	1.50	0%
RAKCERAMIC	48.4	51.8	48.1	249494	15.48	▲ 9%	11.80%	▼ -14.2%	42.46	66.80	17119	16.81	2.92	18%
SPCERAMICS	19.3	20.9	18.8	170452	3.39	▼ -64%	2.59%	▼ -7.2%	43.33	11.36	2836	37.12	0.63	0%
STANCERAM	115.2	120.0	108.7	16626	1.88	▲ 90%	1.44%	▲ 4.1%	62.11	49.46	744	63.36	6.86	-2%

Engineering

AFTABAUTO	60.1	61.2	59.5	37716	2.27	▼ -1%	0.47%	▼ -1.6%	43.10	53.61	5754	13.72	1.01	7%
ANWARGALV	83.7	88.8	80.5	775348	65.79	▼ -37%	13.56%	▼ -0.4%	61.16	67.61	1215	62.59	10.32	13%
APOLOSPAT	14.5	14.9	14.4	460664	6.75	▼ -58%	1.39%	▼ -2.7%	41.09	0.00	5649	159.50	0.72	6%
ATLASBANG	133.0	141.6	127.8	37336	5.04	▼ -76%	1.04%	▼ -4.4%	50.88	146.89	4005	1434.31	0.89	-2%
AZIZPIPES	136.9	146.8	132.2	41843	5.95	▼ -29%	1.23%	▼ -6.0%	37.21	41.38	697	222.07	-2.68	-1%
BBSCABLES	88.9	93.1	88.5	411695	37.27	▼ -39%	7.68%	▼ -4.2%	0.00	0.00	12268	12.50	5.33	25%
BDAUTOCA	125.5	131.8	122.4	177656	22.64	▲ 13%	4.67%	▲ 1.4%	56.95	36.48	485	102.24	45.30	40%
BBS	33.3	34.7	32.8	287774	9.67	▼ -27%	1.99%	▼ -3.2%	39.46	36.44	4697	14.54	2.53	20%
BDLAMPS	186.6	194.9	185.0	27285	5.22	▼ -39%	1.08%	▲ 0.3%	53.59	200.17	1749	39.45	1.99	5%
BDTHAI	26.9	28.3	26.8	1047404	28.73	▼ -31%	5.92%	▼ -5.3%	36.31	31.68	2956	0.00	0.92	-2%
BENGALWTL	34.6	36.4	34.0	63024	2.20	▼ -27%	0.45%	▼ -4.9%	36.24	52.33	3165	24.32	1.45	7%
BSRMLTD	93.7	94.5	93.0	56047	5.25	▼ -26%	1.08%	▼ -1.6%	34.80	128.42	20109	28.29	1.85	7%

Weekly Stock Market Report

Sectorwise Traded Script

Ticker	Weekly Market Statistics									Market Technical and Fundamental Indicators						
	Close	High	Low	Avg Daily Volume	Avg Daily Turnover (BDTmn)	Δ in	Turnover	% of Sector Turnover	weekly Return	RSI****	EMA (10)****	Market Cap BDT Mn	P/E*	P/B**	ROE***	
Engineering																
BSRMSTEEL	70.9	73.7	70.7	48080	3.44	▼	-40%	0.71%	▼	-3.7%	31	90.58	24232	16.88	2.10	19.1%
DESHBANDHU	19.6	20.3	19.3	869396	17.23	▼	-21%	3.55%	▼	-3.0%	42	11.73	1093	49.00	1.75	3.4%
ECABLES	235.1	246.9	221.2	171192	40.71	▲	14%	8.39%	▲	3.1%	61	132.18	5642	195.92	7.68	3.9%
GOLDENSON	13.0	13.6	12.7	83348	1.10	▼	-40%	0.23%	▼	-1.5%	49	25.97	2232	0.00	0.56	-5.3%
GPHISPAT	37.0	39.2	36.9	106631	4.01	▼	-13%	0.83%	▼	-4.1%	40	38.06	12115	19.98	2.41	11.6%
IFADAUTOS	119.4	126.0	118.5	344556	42.10	▼	-43%	8.68%	▼	-4.9%	30	105.79	27290	13.22	4.55	26.7%
KAY&QUE	152.6	154.4	142.2	29238	4.29	▲	46%	0.89%	▲	7.3%	70	17.88	748	94.78	-13.28	-1.0%
KDSALTD	60.0	61.6	59.6	29456	1.77	▼	-43%	0.37%	▼	-3.4%	38	76.60	3432	26.91	2.42	9.2%
MONNOSTAF	878.9	969.0	860.0	10442	9.57	▼	-22%	1.97%	▼	-6.4%	65	260.44	404	515.81	19.34	1.1%
NAHEEACP	50.2	55.3	50.1	308632	16.12	▼	-34%	3.32%	▼	-8.7%	23	260.44	2410	12.27	4.76	26.5%
NAVANACNG	62.3	64.0	61.4	51352	3.21	▼	-40%	0.66%	▼	-1.9%	42	45.40	4269	21.63	1.85	9.3%
NPOLYMAR	81.0	83.0	80.4	37862	3.10	▼	-44%	0.64%	▼	-2.3%	47	90.10	1986	34.81	1.93	6.6%
NLTUBES	132.7	137.1	131.6	358279	48.02	▼	-45%	9.90%	▼	-1.8%	46	90.07	3819	0.00	0.66	-1.3%
OAL	17.5	18.2	17.3	241835	4.29	▼	-47%	0.88%	▼	-3.3%	40	32.35	2697	15.90	1.19	8.2%
OIMEX	41.5	45.8	40.9	306210	13.35	▼	-24%	2.75%	▼	-7.6%	24	32.35	2095	14.66	4.00	19.5%
QSMDDRYCELL	70.2	71.8	68.2	81555	5.72	▼	-35%	1.18%	▼	-1.7%	43	97.12	3688	41.59	1.85	4.9%
RANFOUNDRY	138.9	144.8	131.5	107476	14.95	▲	70%	3.08%	▲	4.4%	63	100.77	1389	34.04	5.86	17.5%
RENWICKJA	631.2	653.0	567.1	10255	6.35	▲	210%	1.31%	▲	9.6%	67	247.64	1262	129.61	-17.69	-12.5%
RSRMSTEEL	55.1	57.9	54.6	172473	9.63	▼	-64%	1.99%	▼	-4.5%	33	48.13	5576	6.68	1.45	20.0%
SALAMCRST	31.5	31.8	30.8	45242	1.41	▼	-42%	0.29%	▲	0.0%	45	27.72	3099	27.16	1.61	5.7%
SHURWID	17.4	17.8	16.8	374101	6.43	▼	-44%	1.33%	▲	0.0%	59	0.00	907	0.00	1.44	-4.7%
SINGERBD	183.2	187.5	182.1	69381	12.87	▼	-39%	2.65%	▼	-1.6%	37	153.16	14050	19.72	7.22	32.5%
WMSHIPYARD	27.0	28.6	26.7	557394	15.30	▼	-56%	3.15%	▼	-5.6%	41	32.77	4009	53.56	0.79	6.5%
YPL	20.0	21.2	19.8	166127	3.39	▼	-39%	0.70%	▼	-5.7%	47	0.00	1363	133.33	2.24	6.4%
Financial Institution																
BAYLEASING	26.0	26.9	25.9	77987	2.05	▼	-42%	0.99%	▼	-2.3%	40	18.80	3404	28.57	1.29	3.7%
BDFINANCE	21.6	22.8	21.6	616080	13.72	▼	-54%	6.60%	▼	-4.4%	39	10.31	2991	10.46	1.49	8.8%
BIFC	9.9	10.5	9.9	14682	0.15	▼	-57%	0.07%	▼	-5.7%	40	8.10	997	0.00	3.14	-87.9%
DBH	132.0	135.0	132.0	25084	3.32	▲	153%	1.60%	▼	-1.4%	45	106.19	16084	16.38	4.46	24.6%
FAREASTFIN	10.1	10.6	10.0	194658	1.99	▼	-32%	0.96%	▼	-4.7%	38	9.48	1657	0.00	0.80	4.9%
FASFIN	16.4	18.4	16.0	441865	7.53	▼	-14%	3.62%	▼	-10.9%	21	10.54	2117	14.29	1.31	5.8%
FIRSTFIN	11.8	12.6	11.6	51035	0.61	▲	68%	0.29%	▼	-2.5%	49	11.10	1440	25.79	0.98	3.3%
GSPFINANCE	28.5	29.8	28.2	465053	15.28	▼	-25%	7.35%	▼	-4.0%	37	14.28	2982	7.96	1.17	14.0%
ICB	142.3	147.9	142.0	38788	5.61	▼	-28%	2.70%	▼	-3.6%	31	113.22	94552	17.46	2.52	12.3%
IDLC	73.9	76.0	71.5	428769	31.43	▼	-19%	15.13%	▼	-2.1%	37	62.23	27864	12.06	3.12	27.6%
ILFSL	19.6	21.0	19.3	596311	11.87	▼	-19%	5.71%	▼	-6.7%	29	9.23	3521	13.78	1.52	5.4%
IPDC	47.6	49.2	47.4	97339	4.72	▼	-71%	2.27%	▼	-2.7%	37	29.21	8654	25.73	3.12	12.8%
ISLAMICFIN	18.7	19.3	18.5	139246	2.62	▼	-40%	1.26%	▼	-3.1%	33	15.37	2262	8.51	1.32	16.7%
LANKABAFIN	37.4	38.9	36.4	2308459	86.12	▼	-55%	41.44%	▼	-3.6%	30	29.23	17854	11.29	2.67	14.1%
MIDASFIN	37.0	41.5	36.9	69420	2.68	▲	111%	1.29%	▼	-11.7%	29	14.90	4450	17.21	3.86	17.4%
NHFIL	41.0	42.3	40.9	13062	0.54	▼	-79%	0.26%	▼	-3.8%	29	27.69	4362	18.22	2.66	15.2%
PHOENIXFIN	35.5	36.6	35.0	93119	3.32	▼	-39%	1.60%	▼	-3.0%	42	19.84	4313	14.92	1.64	10.9%
PLFSL	12.7	13.0	12.6	281815	3.60	▼	-34%	1.73%	▼	-2.3%	38	14.71	3625	8.64	1.17	-13.2%
PREMIERLEA	15.6	16.0	15.3	145959	2.29	▼	-36%	1.10%	▼	-2.5%	34	8.66	1881	10.46	1.29	10.8%
PRIMEFIN	10.8	11.5	10.8	155457	1.73	▲	100%	0.83%	▼	-0.9%	42	11.43	2947	0.00	1.06	-29.1%
UNIONCAP	18.0	18.9	18.0	212321	3.93	▲	64%	1.89%	▼	-5.8%	37	14.59	2818	0.00	1.11	2.9%
UNITEDFIN	21.3	22.0	21.0	45352	0.97	▼	-39%	0.47%	▼	-3.2%	32	20.93	3615	13.31	1.23	11.1%
UTTARAFIN	67.9	69.9	66.0	25257	1.73	▼	-57%	0.83%	▼	-1.6%	36	57.83	8502	8.75	1.49	15.2%
Food & Allied																
AMCL(PRAN)	215.6	225.0	213.1	16432	3.60	▼	-7%	1.17%	▼	0.0%	46	189.89	1725	30.93	3.54	12.0%
APEXFOODS	189.5	197.9	175.0	260868	48.42	▲	19%	15.70%	▲	8.9%	82	107.87	1081	109.54	1.92	1.6%
BANGAS	235.4	282.9	223.4	47852	12.05	▼	-17%	3.91%	▼	-16.6%	50	286.54	1486	0.00	11.74	-5.2%
BATBC	3685.5	3700.0	3604.1	206	0.75	▼	-93%	0.24%	▲	2.3%	60	2911.67	221130	26.91	24.84	102.4%
BEACHHATCH	17.3	18.5	17.2	116088	2.08	▼	-71%	0.67%	▼	-7.0%	48	13.23	716	0.00	1.53	-3.8%
EMERALDOIL	17.9	19.0	17.5	48655	0.89	▼	-57%	0.29%	▼	-5.3%	46	52.07	1069	0.00	1.59	37.2%
FINEFOODS	41.4	43.9	39.0	1519893	63.57	▲	75%	20.61%	▲	7.5%	67	8.16	562	48.41	4.14	6.4%
FUWANGFOOD	20.1	21.9	19.9	4488323	94.31	▲	50%	30.58%	▼	-2.9%	55	16.68	2025	26.51	2.42	7.8%
GEMINISEA	403.9	416.0	399.0	33500	13.61	▼	-47%	4.41%	▼	-2.5%	47	387.40	1499	110.27	-316.43	598.9%
GHAIL	40.2	41.4	40.0	481269	19.56	▼	-35%	6.34%	▼	-2.7%	37	22.99	4382	20.95	2.32	13.2%
MEGCONMILK	31.6	36.9	30.1	93414	3.11	▲	9%	1.01%	▼	-12.0%	50	7.11	506	0.00	-1.33	36.4%
MEGHNA PET	26.2	31.0	26.1	66124	1.90	▼	-24%	0.62%	▼	-10.9%	46	5.46	314	0.00	-17.25	31.6%
NTC	644.6	669.7	641.0	12653	8.33	▼	-60%	2.70%	▼	-2.2%	50	605.89	4254	39.55	5.14	11.5%
OLYMPIC	262.1	271.0	261.3	81832	21.62	▼	-1%	7.01%	▼	-2.2%	27	283.63	52404	31.13	20.78	89.1%

Weekly Stock Market Report

Sectorwise Traded Script

Ticker	Weekly Market Statistics									Market Technical and Fundamental Indicators					
	Close	High	Low	Avg Daily Volume	Avg Daily Turnover (BDTmn)	Δ (%)	% of Sector Turnover	Weekly Return	RSI****	EMA (10)****	Market Cap	P/E*	P/B**	ROE***	
Food & Allied															
RAHIMAFOOD	140.0	152.1	139.0	20194	2.92	▼ -2%	0.95%	▼ -7%	32.06	42.99	2800	0.00	38.35	-4.4%	
RDFOOD	16.2	17.3	16.1	585106	9.81	▼ -28%	3.18%	▼ -3.6%	48.48	14.21	1065	29.12	1.22	4.3%	
SHYAMPSUG	63.6	70.0	62.1	18659	1.19	▼ -70%	0.39%	▼ -1.4%	57.07	6.26	318	0.00	76.23	38.2%	
ZEALBANGLA	68.9	72.1	66.6	10129	0.70	▼ -26%	0.23%	▼ -4.4%	44.82	6.83	413	0.00	-0.31	26.8%	
Fuel & Power															
BARKAPOWER	32.7	33.8	32.1	302559	9.92	▼ -22%	4.36%	▼ -1.8%	39.41	29.97	6542	16.11	1.87	13.5%	
BDWELDING	23.2	24.7	22.9	125321	2.96	▼ -51%	1.30%	▼ -3.7%	39.87	17.70	996	10.64	1.84	13.5%	
CVOPRL	232.9	236.7	207.2	451419	102.91	▲ 621%	45.22%	▲ 13.0%	67.88	345.96	5880	0.00	16.30	-19.5%	
LINDEBD	1238.1	1279.0	1233.0	2337	2.94	▼ -51%	1.29%	▼ -2.6%	28.32	1156.26	18842	21.63	5.92	29.5%	
DESCO	42.0	43.8	41.8	89039	3.79	▼ -47%	1.67%	▼ -1.6%	37.89	53.57	16698	0.00	1.11	1.2%	
DOREENPWR	105.2	109.8	104.4	127947	13.63	▲ 13%	5.99%	▼ -3.2%	24.22	53.57	11109	13.59	5.16	34.8%	
EASTRNLU	1026.8	1075.0	1024.3	5272	5.49	▼ -54%	2.41%	▼ -2.3%	48.52	322.34	1021	24.68	7.18	31.9%	
GBBPOWER	16.0	16.6	15.8	173554	2.81	▼ -51%	1.23%	▼ -4.8%	36.22	16.38	1629	13.71	0.80	5.5%	
JAMUNAOIL	188.9	191.8	186.5	36422	6.84	▼ -58%	3.01%	▲ 0.8%	42.86	183.11	20859	9.48	1.32	14.5%	
KPCL	55.9	59.0	55.3	208929	11.78	▲ 49%	5.17%	▼ -4.4%	43.73	72.48	20196	10.59	2.09	19.7%	
MJLBD	108.1	110.0	108.0	68679	7.46	▼ -29%	3.28%	▼ -1.7%	42.41	87.83	32610	16.02	3.09	21.0%	
MPETROLEUM	189.4	190.0	185.0	16235	3.03	▼ -67%	1.33%	▲ 1.9%	48.99	175.19	20496	8.63	2.07	23.5%	
PADMAOIL	234.0	238.0	231.2	20758	4.86	▼ -10%	2.14%	▲ 0.0%	47.08	201.74	22986	10.37	2.52	23.4%	
POWERGRID	50.5	51.9	50.0	67754	3.43	▼ -65%	1.51%	▼ -1.0%	37.90	45.78	23276	9.64	0.56	5.2%	
SPCL	100.1	104.0	98.8	72153	7.29	▲ 8%	3.20%	▼ -3.0%	28.10	134.84	16118	19.58	3.31	19.1%	
SUMITPOWER	35.4	35.8	35.0	348532	12.30	▼ -55%	5.40%	▼ -0.8%	41.85	36.32	37803	8.75	1.22	13.8%	
TITASGAS	42.2	42.9	42.0	122798	5.20	▼ -24%	2.29%	▼ -1.4%	40.38	53.90	41745	8.32	0.64	8.1%	
UPGDCL	161.1	162.0	151.6	134904	20.92	▼ -7%	9.19%	▲ 5.0%	59.01	140.53	64317	15.04	4.30	30.5%	
Insurance															
AGRANINS	18.8	19.4	18.5	5164	0.10	▼ -60%	0.15%	▼ -3.6%	37.16	14.21	516	10.51	1.13	11.6%	
ASIAINS	22.2	23.9	22.1	2038	0.05	▼ -65%	0.07%	▼ -1.3%	47.96	14.27	1045	12.91	1.24	9.1%	
ASIAPACINS	24.2	25.3	24.2	7278	0.18	▼ -72%	0.28%	▼ -2.0%	48.63	14.44	1025	16.58	1.46	9.2%	
BGIC	20.2	20.6	19.5	16300	0.33	▼ -38%	0.51%	▼ -1.0%	45.45	16.96	1091	22.70	1.04	5.0%	
BNICL	16.6	17.4	16.5	82872	1.40	▲ 51%	2.17%	▼ -5.7%	33.01	14.44	735	10.06	1.03	12.1%	
CENTRALINS	20.3	22.0	20.1	1892	0.04	▼ -65%	0.06%	▼ -1.5%	42.82	17.41	956	11.46	0.93	7.7%	
CITYGENINS	16.1	16.8	15.7	156003	2.51	▼ -11%	3.88%	▼ -3.0%	37.61	12.28	998	10.19	1.12	11.4%	
CONTININS	20.2	20.5	19.6	15380	0.31	▼ -19%	0.48%	▼ -0.5%	41.26	14.60	665	13.84	1.09	8.1%	
DHAKAINS	20.4	22.8	20.3	38943	0.83	▲ 33%	1.28%	▼ -10.5%	28.14	16.43	819	11.33	1.17	9.4%	
EASTERNINS	28.2	28.9	27.4	2206	0.06	▼ -73%	0.10%	▼ -1.1%	48.59	25.11	1216	8.68	0.76	9.1%	
EASTLAND	22.1	22.3	21.0	31538	0.68	▲ 7%	1.06%	▲ 1.4%	41.71	19.87	1519	9.36	0.91	8.1%	
FEDERALINS	11.1	11.5	11.1	66693	0.75	▼ -30%	1.16%	▼ -3.5%	32.69	10.23	694	21.72	1.04	4.9%	
GLOBALINS	14.1	14.4	13.7	45607	0.64	▲ 4%	1.00%	▼ -1.4%	43.08	12.18	494	3.66	1.23	4.6%	
GREENDELTA	58.8	59.9	57.8	12791	0.75	▼ -10%	1.16%	▼ -1.0%	42.31	47.74	4745	17.55	0.80	4.2%	
ISLAMIINS	29.8	31.0	28.7	77948	2.28	▲ 110%	3.53%	▲ 0.3%	42.30	14.84	1012	20.73	2.41	11.2%	
JANATAINS	18.0	19.3	17.9	10358	0.19	▼ -83%	0.30%	▼ -6.3%	53.84	12.30	690	22.78	1.34	3.8%	
KARNAPHULI	16.2	16.5	15.5	7538	0.12	▼ -40%	0.19%	▼ -1.8%	43.82	12.03	659	11.57	0.83	7.3%	
MERCINS	22.0	23.3	21.8	89000	2.00	▼ -57%	3.09%	▼ -3.9%	45.18	12.09	948	15.60	1.27	8.3%	
NITOLINS	32.1	32.1	31.9	25692	0.82	▲ 27317%	1.27%	▲ 0.9%	41.33	21.36	1132	10.94	1.50	12.2%	
NORTHNRINS	21.9	23.1	21.6	3991	0.09	▼ -62%	0.14%	▼ -3.9%	35.93	17.16	934	12.73	1.19	8.9%	
PARAMOUNT	17.9	17.9	17.2	10193	0.18	▼ -39%	0.27%	▲ 0.0%	51.97	11.24	515	16.15	1.36	7.7%	
PEOPLESINS	20.1	20.8	20.0	5164	0.10	▼ -75%	0.16%	▼ -3.8%	45.45	14.04	929	8.07	0.88	10.9%	
PHENIXINS	27.0	28.0	26.8	7743	0.21	▲ 59%	0.33%	▼ -3.6%	32.37	23.62	1089	10.63	0.78	6.9%	
PIONEERINS	27.9	28.3	26.4	5958	0.17	▼ -73%	0.26%	▲ 0.7%	42.08	30.14	1952	10.00	0.88	8.7%	
PRAGATIINS	27.9	28.4	27.5	5769	0.16	▼ -52%	0.25%	▲ 1.1%	46.22	24.79	1629	10.23	0.53	4.5%	
PRIMEINSUR	20.5	20.8	19.5	100294	2.02	▲ 41%	3.13%	▲ 5.1%	69.02	14.62	838	9.45	1.25	13.5%	
PROVATIINS	18.1	18.7	17.8	47524	0.86	▼ -21%	1.33%	▼ -0.5%	48.37	12.98	538	10.26	1.16	11.3%	
PURABIGEN	15.3	16.9	15.2	74032	1.18	▼ -26%	1.82%	▼ -3.2%	40.58	12.38	756	11.65	1.44	10.5%	
RELIANCINS	56.5	56.7	52.1	25039	1.40	▲ 12%	2.17%	▲ 1.1%	54.79	48.57	4464	10.70	1.01	9.7%	
REPUBLIC	29.3	31.0	27.9	11334	0.33	▼ -87%	0.51%	▼ -4.2%	58.86	13.83	1026	16.24	2.22	13.5%	
RUPALIINS	19.0	19.6	18.8	40321	0.77	▲ 41%	1.20%	▼ -3.1%	42.33	16.41	1261	11.35	0.80	7.5%	
SONARBAINS	16.5	17.2	16.3	25490	0.43	▼ -27%	0.66%	▼ -1.8%	42.94	16.02	567	11.06	1.08	10.2%	
STANDARINS	29.4	30.5	28.8	67266	1.97	▼ -47%	3.05%	▼ -1.3%	43.65	13.23	956	14.49	1.70	6.7%	
TAKAFULINS	27.0	27.4	25.8	34428	0.92	▲ 23%	1.42%	▼ -0.7%	53.91	15.80	1023	14.97	1.69	8.4%	
UNITEDINS	27.3	28.7	25.2	6577	0.18	▼ -4%	0.29%	▼ -1.1%	45.94	23.40	1147	11.38	0.95	10.4%	

Weekly Stock Market Report

Script	Weekly Market Statistics									Market Technical and Fundamental Indicators						
	Ticker	Close	High	Low	Avg Daily Volume	Avg Daily Turnover (BDTmn)	Δ (%)	% of Sector Turnover	weekly Return	RSI****	EWMA (10)*****	Mid Mkt Cap	P/E*	P/B**	ROE***	
Life Insurance																
DELTALIFE	101.4	103.0	100.5	23019	2.34	▼	-30%	3.62%	▼	-2%	44	96	12548.3	0.0	0	0
FAREASTLIF	68.3	70.0	68.2	12814	0.89	▼	-61%	1.37%	▼	-2%	44	64	5104.9	0.0	0	0
MEGHNALIFE	57.9	61.0	57.6	36961	2.20	▼	-59%	3.40%	▼	-4%	46	48	1940.9	0.0	0	0
NATLIFEINS	148.5	150.9	148.2	4010	0.60	▼	-54%	0.92%	▼	0%	44	192	14013.5	0.0	0	0
PADMALIFE	43.8	44.7	40.7	366298	15.71	▲	18%	24.31%	▲	5%	47	29	1419.1	0.0	0	0
POPULARLIF	81.0	81.7	79.0	124734	10.00	▼	-52%	15.46%	▲	1%	63	72	4894.7	0.0	0	0
PRAGATILIF	105.0	109.0	103.6	9410	0.99	▼	-70%	1.53%	▼	-3%	44	107	1089.1	0.0	0	0
PRIMELIFE	50.7	50.9	49.3	3290	0.17	▼	-52%	0.26%	▼	0%	47	37	1547.4	0.0	0	0
PROGRESLIF	65.7	68.5	65.1	3308	0.22	▼	-71%	0.34%	▲	0.8%	44	55	845.3	0.0	0	0
RUPALILIFE	47.5	48.5	47.0	65181	3.09	▼	-84%	4.78%	▼	-0.2%	48	30	1317.6	0.0	0	0
SANDHANINS	28.8	30.1	28.5	92651	2.70	▼	-18%	4.17%	▼	-3.7%	34	35	2632.8	0.0	0	0
SUNLIFEINS	24.6	25.3	24.4	29205	0.73	▼	-49%	1.12%	▼	-0.8%	41	26	862.5	0.0	0	0
IT Sector																
AAMRATECH	32.0	33.3	31.6	134610	4.36	▼	-0.51	4.29%	▼	-3.0%	45.14	26.77	1771.8	16.57	1.41	6.8%
AAMRANET	85.9	90.0	85.5	201849	17.55	▼	-0.48	17.29%	▼	-3.6%	39.87	26.77	4556.2	24.18	4.46	12.7%
AGNISYSL	22.0	24.0	21.8	1060201	24.54	▼	-0.37	24.18%	▼	-6.4%	52.34	20.23	1520.2	20.59	1.53	6.9%
BDCOM	27.7	29.3	27.5	485637	13.75	▼	-0.61	13.55%	▼	-3.1%	51.71	23.00	1288.7	19.68	1.90	9.9%
DAFODILCOM	40.6	41.6	40.2	81504	3.33	▼	-0.39	3.28%	▼	-2.9%	41.57	18.77	2026.4	17.17	3.08	16.9%
INTECH	20.9	22.0	20.1	1917576	34.83	▲	0.76	34.31%	▲	4.0%	58.48	11.99	536.1	19.56	1.87	10.2%
ISNLTD	26.1	29.2	25.8	77032	2.09	▼	-0.58	2.06%	▼	-3.0%	56.99	12.31	285.0	0.00	1.88	-3.7%
ITC	31.7	33.4	31.6	32889	1.06	▼	-0.56	1.05%	▼	-3.9%	37.97	0.00	3298.4	27	2.03	6.6%
Miscellaneous																
AMANFEED	59.0	62.5	58.1	90639	5.48	▼	-55%	5.29%	▼	-5.3%	47.03	44.33	6853.4	11.58	2.39	20.3%
ARAMIT	354.0	355.0	343.3	7915	2.76	▼	-43%	2.67%	▲	1.7%	58.18	459.86	2124.0	38	2.28	5.5%
BERGERPBL	2200.0	2205.0	2130.0	103	0.22	▼	-96%	0.21%	▲	0.7%	50.70	1930.59	51015.7	30.67	8.82	35.2%
BEXIMCO	25.8	26.2	25.4	1069843	27.52	▼	-30%	26.58%	▼	-0.8%	45.78	28.36	21532.4	19	0.36	1.7%
BSC	43.8	45.2	43.3	283212	12.51	▼	-30%	12.08%	▼	-0.5%	48.98	328.24	6681.0	66.85	0.80	1.1%
GOBALLPEN	79.4	82.4	78.0	33417	2.68	▼	-43%	2.59%	▼	-2.0%	39.18	61.24	708.9	81	0.50	1.1%
KBPPWBIL	16.8	17.5	16.5	338192	5.72	▼	-40%	5.52%	▼	-4.0%	46.07	21.48	1647.7	20.30	1.42	6.4%
MIRACLEIND	42.7	45.9	41.9	848515	37.19	▲	16%	35.91%	▲	2.4%	48.85	22.54	1251.3	34	0.98	2.9%
NFML	16.5	17.1	16.1	309079	5.13	▼	-51%	4.96%	▼	-3.5%	43.88	18.03	1331.7	16.43	1.31	8.3%
SAVAREFR	158.1	189.9	157.1	2344	0.40	▲	1%	0.38%	▼	-15.4%	43.38	46.58	220.2	429	25.88	2.8%
SINOBANGLA	56.8	59.0	54.9	57057	3.24	▲	18%	3.13%	▲	3.3%	57.95	26.58	1135.8	35.27	2.17	6.2%
ZEALBANGLA	68.9	72.1	66.6	10129	0.70	▼	-26%	0.68%	▼	-4.4%	44.82	6.83	413.4	-	-0.31	26.8%
Pharmaceuticals & Chemicals																
ACI	399.4	430.0	398.0	98178	40.48	▲	10%	8.26%	▼	-6.0%	21.90	526.17	19252.1	22	1.82	10.5%
ACIFORMULA	182.5	188.0	179.0	5797	1.06	▼	-61%	0.22%	▼	-1.4%	45.08	174.12	8212.5	42.54	3.36	11.2%
ACMELAB	112.9	115.0	111.1	72679	8.21	▼	-43%	1.67%	▼	-0.1%	45.61	0.00	23889.8	17	2.10	12.7%
ACTIVEFINE	34.0	35.0	33.2	354575	12.05	▼	-41%	2.46%	▼	-2.6%	50.45	56.04	6798.2	10.02	1.74	18.3%
AFCAGRO	40.0	41.9	39.3	137076	5.54	▼	-46%	1.13%	▼	-3.8%	40.39	66.76	3643.2	14	2.75	22.2%
AMBEEPHA	446.5	453.0	396.0	29413	12.63	▲	159%	2.57%	▲	9.1%	70.96	252.53	1071.6	139.97	17.69	12.1%
BEACONPHAR	20.1	20.8	20.0	202849	4.12	▲	24%	0.84%	▼	-3.8%	35.95	14.68	4643.1	39	1.55	3.5%
BXPBARMA	106.4	111.0	105.6	627418	67.35	▼	-14%	13.73%	▼	-3.1%	46.04	75.61	43151.2	17.73	1.72	9.3%
BXSYNTH	13.0	15.2	12.5	443842	6.13	▼	-63%	1.25%	▼	-14.5%	53.45	8.09	1127.3	-	0.63	-11.9%
CENTRALPHL	16.8	17.8	16.7	367510	6.28	▼	-59%	1.28%	▼	-5.1%	44.11	21.92	1916.8	33.41	1.10	6.5%
FARCHEM	17.8	18.3	17.7	274954	4.93	▼	-37%	1.01%	▼	-2.7%	43.61	30.74	3208.3	13	1.28	12.3%
GHCL	38.9	41.4	38.7	35729	1.44	▼	-49%	0.29%	▼	-3.7%	43.81	37.37	2800.8	33.83	0.72	2.0%
GLAXOSMITH	1578.0	1593.0	1550.0	613	0.96	▲	126%	0.20%	▲	0.1%	47.13	1798.16	19009.3	22	7.35	31.9%
IBNSINA	241.5	248.5	240.0	32503	7.86	▼	-4%	1.60%	▼	-0.6%	44.59	150.72	6889.2	26.60	6.23	23.8%
IMAMBUTTON	40.0	42.7	38.1	32672	1.32	▼	-49%	0.27%	▼	-4.1%	44.02	8.98	308.0	-	6.43	-5.9%
JMISMDL	181.3	186.9	175.3	62356	11.40	▲	67%	2.32%	▲	0.4%	55.60	155.76	1994.3	27.72	2.68	10.3%
KEYACOSMET	10.6	10.9	10.4	5892668	62.55	▼	-35%	12.75%	▼	-1.9%	38.41	14.28	10622.3	6	0.83	14.0%
KOHINOOR	390.8	396.0	375.0	6898	2.68	▲	65%	0.55%	▲	2.3%	58.40	342.06	5477.3	36.29	9.89	30.2%
LIBRAINFU	553.9	558.9	501.0	12239	6.59	▲	272%	1.34%	▲	4.7%	62.56	288.53	693.3	134	0.35	0.3%
MARICO	1132.4	1190.0	1125.0	654	0.74	▼	-44%	0.15%	▼	-3.5%	44.26	1500.74	35670.6	23.08	22.57	87.6%
ORIONINFU	54.5	56.3	54.3	69533	3.83	▼	-45%	0.78%	▼	-2.9%	49.22	49.37	1109.6	33	4.34	12.0%
ORIONPHARM	47.5	49.0	47.4	171127	8.23	▼	-10%	1.68%	▼	-0.8%	45.58	34.22	11115.0	15.78	0.67	4.8%
PHARMAID	532.4	534.9	497.1	123354	63.92	▼	-19%	13.03%	▲	7.0%	75.63	229.24	1661.1	42	10.75	20.4%
RECKITBEN	1752.9	1781.9	1735.0	311	0.54	▼	-68%	0.11%	▼	-0.5%	43.65	1580.74	8282.5	24.16	35.04	134.0%
RENATA	1260.0	1275.2	1245.1	4775	6.01	▼	-32%	1.23%	▼	-0.8%	59.57	1220.37	88239.1	31	6.82	22.4%
SALVOCHEM	22.3	23.7	22.2	592074	13.48	▼	-61%	2.75%	▼	-5.1%	51.87	13.38	1381.0	32.23	1.97	6.9%
SQURPHARMA	317.8	324.9	317.0	334934	107.42	▼	-20%	21.90%	▼	-1.9%	42.40	249.04	234342.9	20	4.78	23.8%
WATACHEM	269.0	289.4	267.1	80994	22.64	▼	-4%	4.62%	▼	-5.6%	48.58	150.68	2453.7	75.01	3.64	5.4%

Weekly Stock Market Report

Sectorwise Traded Script

Ticker	Weekly Market Statistics								Market Technical and Fundamental Indicators						
	Close	High	Low	Avg Daily Volume	Avg Daily Turnover (BDTmn)	Δ in Turnover	% of Sector Turnover	Weekly Return	RSI****	EMA (10)****	Market Cap	Trading P/E*	P/B**	ROE***	
Service&RealEstate															
EHL	48.0	49.4	47.4	114576	5.55	▼ -55%	15.73%	▼ -2%	41.73	34.06	4481	16.96	3.01	15.5%	
SAIFPOWER	27.6	29.2	27.4	747669	20.88	▲ 23%	59.21%	▼ -5%	33.56	71.78	3210	19.86	0	0	
SAMORITA	78.2	82.0	76.8	65348	5.14	▼ -37%	14.58%	▼ -4%	46.22	76.70	1406	38.66	1.81	8.0%	
SAPORTL	30.4	31.8	30.2	119684	3.69	▼ -11%	10.48%	▼ -5%	31.88	55.12	6892	49.84	1.21	2.6%	
Tannery															
APEXFOOT	335.3	344.9	331.8	28099	9.47	▲ 5%	9.16%	▼ 0%	61.28	334.38	3772	11.59	1.47	3.3%	
APEXTANRY	148.1	153.8	143.6	50236	7.52	▲ 115%	7.27%	▲ 2%	58.12	114.19	2257	97.43	2.01	4.0%	
BATASHOE	1189.8	1208.0	1183.0	703	0.84	▼ -85%	0.81%	▼ 0%	50.62	1326.22	16276	13.98	4.58	32.0%	
FORTUNE	33.5	34.7	32.8	884749	29.56	▼ -36%	28.57%	▼ -2%	40.78	0.00	3639	18.13	0	0	
LEGACYFOOT	64.6	65.6	61.8	858139	54.87	▲ 12%	53.04%	▲ 6%	68.68	25.79	735	0.00	8.90	3.5%	
SAMATALETH	68.5	73.4	68.0	17057	1.20	▼ -69%	1.16%	▼ -2%	48.18	23.02	707	0.00	4.64	-1.1%	
Telecommunication															
GP	482.0	504.0	481.0	302630	133.03	▼ -2%	96.89%	▼ -5%	44.69	253.07	650845	23.73	19.39	85.4%	
BSCCL	98.3	101.2	97.2	43288	4.27	▼ -73%	3.11%	▲ 0%	46.53	103.56	16210	74.47	2.70	5.5%	
Travel&Leisure															
PENINSULA	21.4	22.7	21.2	144149	3.12	▼ -23%	1.92%	▼ -4%	43.88	16.91	2539	112.63	0.70	1.7%	
UNITEDAIR	5.2	5.4	5.1	395654	2.08	▼ -64%	1.28%	▼ -2%	47.45	8.87	3574	0.00	0.53	-16.3%	
UNIQUEHRL	62.3	64.3	60.7	2508463	157.40	▲ 42%	96.80%	▼ -1%	65.73	45.32	18341	30.24	0.70	2.0%	
Jute															
JUTESPINN	168.0	184.7	165.4	3787	0.65	▼ -49%	5.85%	▼ -7%	52.42	48.34	286	0.00	-0.85	28.7%	
NORthern	471.6	485.9	460.0	7531	3.57	▼ -49%	32.10%	▼ 0%	46.14	256.61	1010	349.42	6.22	5.8%	
SONALIANSH	212.7	227.0	205.6	31745	6.90	▲ 46%	62.05%	▲ 0%	52.69	124.26	577	133.77	0.95	0.7%	
Textile															
AL-HAJTEX	87.3	91.9	87.0	76213	6.77	▼ -23%	1.50%	▼ -4%	47.75	102.83	1770	68.74	7.07	13.4%	
ALLTEX	12.8	13.5	12.5	150153	1.95	▼ -79%	0.43%	▼ -6%	56.15	20.53	716	0.00	0.50	-8.0%	
ANLIMAYARN	31.4	32.5	31.3	58646	1.85	▼ -27%	0.41%	▼ -1%	52.68	19.33	561	74.76	2.85	5.0%	
APEXSPINN	135.2	143.5	118.8	235574	31.57	▲ 303%	7.01%	▲ 14%	65.62	74.10	1136	47.94	2.56	5.3%	
ARGONDENIM	29.2	30.5	29.0	175833	5.18	▼ -52%	1.15%	▼ -3%	38.62	24.01	3503	9.05	1.19	12.4%	
ALIF	13.7	14.5	13.6	1115696	15.55	▼ -40%	3.45%	▼ -5%	39.72	12.89	1499	6.85	0.80	11.8%	
CNATEX	8.4	8.8	8.4	336311	2.88	▼ -58%	0.64%	▼ -3%	48.51	11.60	2010	14.57	0.55	7.0%	
DACCADYE	10.1	11.1	9.8	486864	5.05	▼ -61%	1.12%	▼ -7%	55.45	14.14	880	0.00	0.66	-22.9%	
DELTA SPINN	9.3	9.9	9.2	682699	6.52	▼ -38%	1.45%	▼ -5%	50.34	9.54	1548	42.45	0.71	2.0%	
DSHGARME	228.3	235.0	219.0	46496	10.63	▲ 42%	2.36%	▲ 1%	52.68	131.08	1380	44.79	14.91	44.6%	
DSSL	19.6	20.8	19.5	1535942	31.07	▼ -36%	6.90%	▼ -5%	47.81	0.00	2592	14.77	2.30	13.5%	
DULAMIACOT	52.2	55.1	50.1	49342	2.58	▼ -8%	0.57%	▲ 4%	71.52	7.03	394	0.00	5.21	-37.4%	
ENVOYTEX	33.0	33.3	32.2	33202	1.09	▼ -43%	0.24%	▼ -1%	44.85	46.38	5427	15.91	0.90	5.4%	
ETL	15.9	16.8	15.9	371997	6.07	▼ -39%	1.35%	▼ -5%	39.80	0.00	2519	12.78	1.19	8.8%	
FAMILYTEX	7.4	7.7	7.3	866595	6.45	▼ -40%	1.43%	▼ -4%	49.00	11.17	2377	0.00	0.57	0.0%	
FEKDIL	17.3	18.4	17.2	137180	2.43	▼ -38%	0.54%	▼ -6%	36.59	23.12	3212	8.95	0.94	10.6%	
GENNEXT	9.4	9.8	9.4	3271066	31.42	▼ -26%	6.97%	▼ -2%	47.68	9.34	4230	10.84	0.81	4.7%	
HFL	26.2	27.4	26.1	322508	8.63	▲ 15%	1.91%	▼ -3%	45.94	21.07	2386	21.65	0.69	2.1%	
HRTEX	31.6	33.4	31.4	109654	3.52	▼ -44%	0.78%	▼ -5%	46.92	21.56	799	18.81	2.16	9.9%	
HWAWELLTEX	38.5	39.0	37.2	18250	0.70	▼ -51%	0.15%	▲ 1%	55.51	29.11	2156	17.19	1.37	7.5%	
MAKSONSPIN	10.6	11.4	10.5	3878427	42.69	▲ 45%	9.48%	▼ -1%	55.28	8.19	2525	29.25	0.57	1.7%	
MALEKSPIN	19.0	19.8	18.9	52386	1.01	▼ -55%	0.22%	▼ -4%	34.08	16.26	3678	12.84	0.42	3.4%	
MATINSPINN	39.1	40.5	39.0	32619	1.29	▲ 179%	0.29%	▼ -1%	45.17	39.42	3812	19.45	0.93	6.4%	
METROSPIN	13.5	14.6	13.3	2910534	40.62	▲ 48%	9.02%	▲ 2%	61.17	9.11	817	0.00	0.85	-4.0%	
MHSML	17.2	18.1	17.1	98516	1.73	▼ -42%	0.38%	▼ -3%	40.29	28.59	1622	17.77	1.02	9.9%	
MITHUNKNIT	29.6	31.6	28.1	75338	2.29	▼ -54%	0.51%	▼ -4%	55.72	73.83	962	0.00	1.35	0	
MODERN DYE	237.1	247.0	232.0	1758	0.42	▲ 57%	0.09%	▲ 1%	60.10	122.02	324	195.95	50.01	21.5%	
NURANI	17.4	18.3	17.4	577946	10.28	▼ -20%	2.28%	▼ -3%	43.99	0.00	1589	9.64	1.50	11.7%	
PDL	16.6	17.4	16.4	113792	1.91	▼ -41%	0.42%	▼ -5%	35.04	0.00	2110	8.53	1.09	13.8%	
PTL	44.8	47.5	44.4	1063205	48.83	▼ -50%	10.84%	▼ -5%	42.13	16.03	5781	24.43	2.34	9.4%	
PRIMETEX	24.5	26.2	24.4	54157	1.35	▼ -44%	0.30%	▼ -4%	43.63	15.09	936	23.33	0.51	2.2%	
RAHIMTEXT	243.5	256.9	242.6	17489	4.37	▲ 84%	0.97%	▼ -2%	52.67	223.20	1904	47.99	6.82	17.5%	
REGENTTEX	17.8	19.3	17.7	151857	2.80	▼ -50%	0.62%	▼ -6%	36.84	0.00	2056	14.59	0.59	4.0%	
RNSPIN	14.4	15.1	14.4	407753	6.01	▼ -25%	1.33%	▼ -5%	30.70	21.44	4282	12.26	0.68	3.9%	
SAFKOSPINN	17.5	18.1	17.4	590118	10.45	▼ -47%	2.32%	▼ -3%	51.61	17.04	509	35.60	1.01	2.1%	
SAIHAMCOT	15.5	16.2	15.2	133820	2.09	▼ -66%	0.46%	▼ -4%	42.20	14.48	2306	17.03	0.68	4.7%	
SAIHAMTEX	19.5	20.3	19.2	261695	5.16	▼ -49%	1.14%	▼ -2%	52.40	15.08	1766	20.53	0.72	3.8%	
SHASHADNIM	52.8	56.6	52.4	118421	6.32	▼ -4%	1.40%	▼ -5%	28.04	36.73	6312	10.86	1.18	11.3%	
SIMTEX	28.4	29.8	28.3	260212	7.52	▼ -4%	1.67%	▼ -4%	41.46	0.00	1872	12.21	1.32	10.8%	

Weekly Stock Market Report

Sectorwise Traded Script

Weekly Market Statistics									Market Technics							
Ticker	Close	High	Low	Avg Daily Volume	Avg Daily Turnover (BDTmn)	Δ in Turnover	% of Sector	weekly Return	RSI****	EMA (10)****	Market Cap	Trailing P/E*	P/B**	ROE***		
Textile																
SONARGAOI	27.6	29.2	27.4	747669	20.88	▲ 23%	4.63%	▼ -5%	33.56	71.78	3210	19.86	0	0		
SQUARETEX	78.2	82.0	76.8	65348	5.14	▼ -37%	1.14%	▼ -4%	46.22	76.70	1406	38.66	1.81	8.0%		
TALLUSPIN	11.3	11.6	11.1	179434	2.04	▼ -75%	0.45%	▼ -2%	56.12	19.36	1009	0.00	0.86	-2.1%		
TOSRIFA	21.9	22.8	21.5	123632	2.73	▼ -42%	0.61%	▼ -4%	36.67	18.00	1383	19.38	0.66	4.0%		
TUNGHAI	10.0	10.6	9.9	151911	1.54	▼ -78%	0.34%	▼ -6%	51.96	12.11	1067	11.95	0.83	9.4%		
ZAHEENSPIN	18.7	20.4	18.5	1889272	37.27	▲ 150%	8.27%	▼ -5%	31.36	19.34	1843	14.80	1.53	10.4%		
ZAHINTEX	15.2	15.8	15.0	122747	1.89	▼ -28%	0.42%	▼ -4%	42.49	20.41	1244	21.08	0.63	2.8%		

Weekly Stock Market Report

Latest Corporate Declarations

Ticker	Declared Dividend	EPS	NAV	Cash Flow	Record Date
RELIANCINS	15%C 10%S	5.28	64.63	1.20	12.03.18
IDLC	30%C	6.13	33.41	19.76	08.03.18

Right Offers

Ticker	Right Proposal	Record Date	Premium
SOUTHEASTB	1R:2	Proposed	Par
ZAHEENSPIN	1R:1	Proposed	Par
RSRMSTEEL	2R:3	Proposed	15.00
IPDC	1R:2	Proposed	3.00

Weekly Block Transactions

Instr Code	Max Price	Min Price	Trades	Quantity	Value(In mn)
APEXFOODS	170.00	165.00	5.00	56000.00	9.27
PADMALIFE	45.70	45.70	1.00	26000.00	1.19
USMANIAGL	126.00	126.00	1.00	160000.00	20.16
LRGLOBMF1	8.00	8.00	1.00	100000.00	0.80
ZAHEENSPIN	20.10	20.10	4.00	600000.00	12.06
OLYMPIC	263.00	263.00	1.00	300000.00	78.90
BRACBANK	92.50	92.00	2.00	306000.00	28.30
SOURPHARMA	324.00	320.30	3.00	150000.00	48.42
GP	496.20	482.50	2.00	37735.00	18.34