

Weekly Stock Market Report

Thursday, May 17, 2018

Broad Market Measurement

	17-May-18	10-May-18	% Change
Trailing P/E	16.94	17.08	▼ -0.82%
Annualized P/E	18.61	17.05	▲ 9.13%
Price/ NAV	2.11	2.16	▼ -2.31%
Dividend Yield	3.55%	3.47%	▲ 2.39%
Market RSI	21.46	31.06	▼ -30.9%

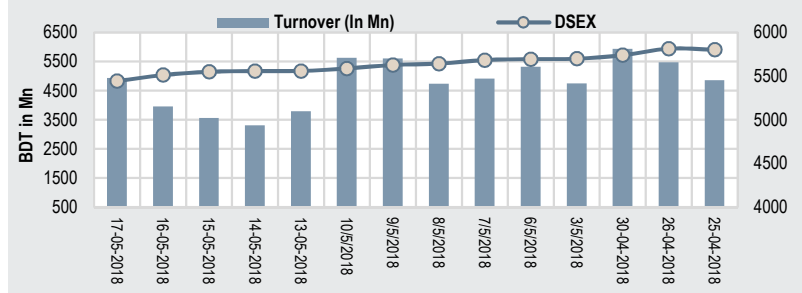
Economic Update

	9-May-18	30-Apr-18	% Change
Forex Reserve(mn \$)	31923.57	33109.53	▼ -3.6%
Call Money Rate	2.77	3.13	▼ -11.5%
Dollar Exchange Rate	83.10	82.98	▲ 0.1%
Euro Exchange	112.58	100.67	▲ 11.8%
Pound Exchange Rate	98.61	114.36	▼ -13.8%

Market Breadth

Losers	267.00
Unchanged	16.00
Gainers	59.00

DSE Weekly Overview



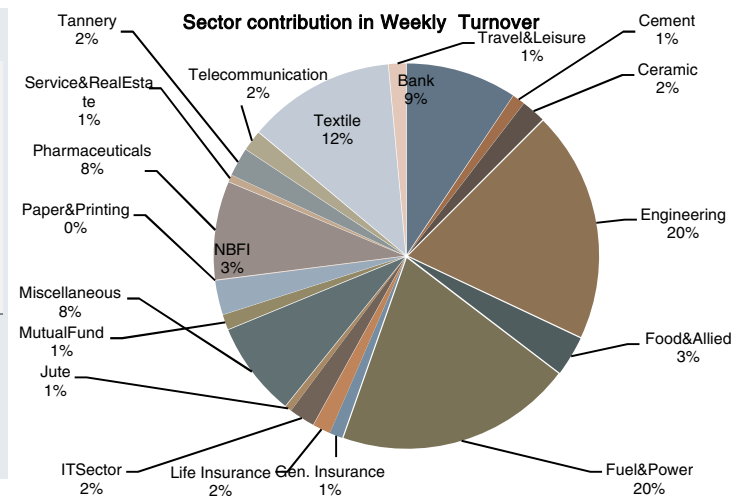
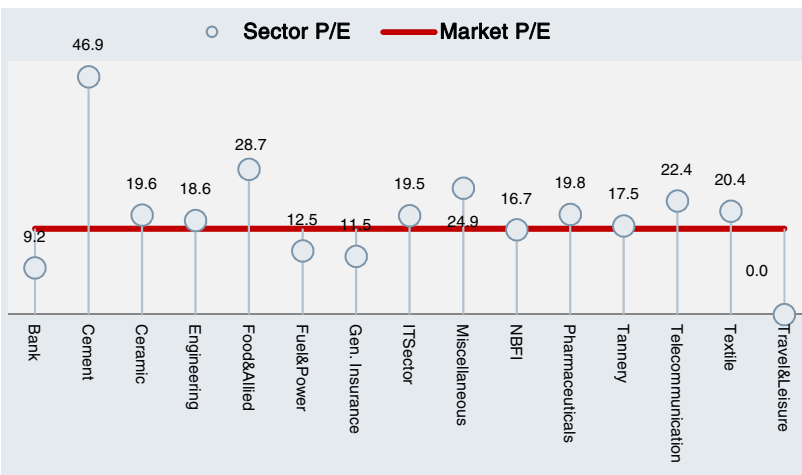
Index	Close	Open	% Change	Point Change
DSEX	5443.31	5587.22	▼ -2.6%	▼ -143.91
DS30	2025.39	2073.54	▼ -2.3%	▼ -48.15

Market Activities Summary

	This Week	Prev. Week	% Change
Avg. Daily Turnover (BDT mn)	3905.13	5235.56	▼ -25.4%
Avg. Daily Turnover (USD mn)	48.46	64.97	▼ -25.4%
Total No of Trade	487460	581574	▼ -16.2%
Avg. Trade Volume	102931074	144623214	▼ -28.8%

Weekly Sector Overview

	Listed Company	Trailing P/E	P/B	Average Daily Turnvoer BDT (mn)	% Δ in Average Turnover	Trade Volume	% Change in volume	Sector Capitalization (BDT In Mn)	Weekly Return
Bank	30.0	9.2	1.02	375.17	-34%	16562491	-29%	567456.81	-3.43%
Cement	7.0	46.9	3.15	42.60	-41%	568368	-41%	117453.48	-2.92%
Ceramic	5.0	19.6	1.84	81.66	13%	985969	-32%	25515.63	-1.53%
Engineering	36.0	18.6	1.97	781.38	-23%	15825888	-25%	191618.89	-1.88%
Food&Allied	18.0	28.7	16.88	134.91	-10%	4530009	-2%	281058.37	0.78%
Fuel&Power	19.0	12.5	1.59	801.42	81%	12494558	201%	380297.34	-0.19%
Gen. Insurance	35.0	11.5	0.94	44.36	41%	1785281	25%	38190.25	-0.56%
Life Insurance	12.0	N/M*	0.00	60.76	-47%	992144	-45%	48807.09	-3.23%
ITSector	8.0	19.5	2.31	87.78	-36%	2143855	-45%	15385.93	-3.26%
Jute	3.0	-33.3	4.02	22.74	-20%	70158	-20%	1755.99	-3.64%
Miscellaneous	12.0	24.9	1.10	320.11	-33%	8436495	-37%	92599.58	-2.45%
MutualFund	37.0	N/M*	0.00	51.43	-46%	6448250	-45%	41915.24	-1.45%
NBFI	23.0	16.7	1.92	116.67	-9%	4772228	-10%	192710.72	-2.21%
Paper&Printing	2.0	-10.0	1.04	0.82	-58%	45038	-55%	1768.98	-1.85%
Pharmaceuticals	29.0	19.8	3.07	333.20	-36%	7093522	-39%	522817.66	-1.60%
Service&RealEstate	4.0	30.4	1.89	23.75	-50%	800099	-46%	15053.55	-6.17%
Tannery	6.0	17.5	3.43	96.75	29%	1771025	6%	25594.28	-0.80%
Telecommunication	2.0	22.4	15.53	70.20	-28%	170117	-28%	614878.74	-4.18%
Textile	50.0	20.4	0.98	498.18	-38%	20370857	-40%	110673.44	-3.30%
Travel&Leisure	4.0	-22.2	0.60	58.85	31%	2412314	28%	22760.72	-3.84%



Weekly Observation

Index closed red with continuous negative movement throughout the week

The benchmark DSEX index lost 143.91 points, a 2.6% decrease over the last trading week. Index lost ~28.55, ~1.09, ~8.68, ~37.13 & ~68.45 consecutively throughout the week. The week closed at ~5443.31 levels. Market participation has decreased by 25.4%. Among the major sectors, only fuel & power posted positive movement. Average Trade Volume decreased by 28.8% and total number of trades decreased by 16.2%.

Among the economic issues, the country's export earnings from India in the July-April of the current financial year 2017-18 surged by 20.73 per riding on a 115.18-per cent growth in readymade garment exports. Country's foreign exchange reserve (forex) fell below US\$ 32 billion again on Wednesday, following a regular bi-monthly payment to Asian Clearing Union (ACU) and the central bank's direct selling of US dollar to the commercial banks. Foreign Direct Investment (FDI) into the country's power sector dropped sharply in the past year despite huge commitment from India and China for the last couple of years. The Chinese consortium, comprising Shenzhen Stock Exchange and Shanghai Stock Exchange, has finally become the strategic partner of Dhaka Stock Exchange (DSE). The World Bank will provide \$110 million assistance for Bangladesh to implement the Sustainable Enterprise Project (SEP) which will help some 20,000 microenterprises adopt environmentally-friendly practices.

Top gaining stocks of the week were MONNOSTAF (+20.57%), STANDARDINS (+16.67%), and QUEENSOUTH (+15.60%). Conversely, top losing stocks were ONEBANKLTD (-24.54%), MTB (-19.03%), and TUNGHAI (-13.25%). INTRACO topped the weekly turnover list followed by WMSHIPYARD, UPGDCL, BSRMLTD & BEXIMCO.

-Rufaiya Zabin

Weekly Top Performer

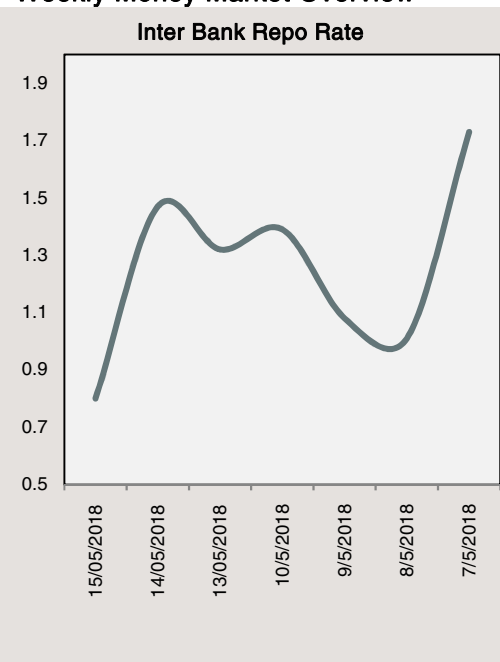
Turnover Leaders			
Company	Closing Price	% Δ	Avg. Daily Turnover (mn)
INTRACO	43.60	0	443.06
WMSHIPYARD	32.20	-3.0%	230.80
UPGDCL	223.20	1.5%	181.15
BSRMLTD	116.90	4.4%	150.78
BEXIMCO	26.90	-7.9%	147.74
BRACBANK	74.00	-5.9%	90.45
QUEENSOUTH	50.40	15.6%	88.95
SQURPHARMA	296.50	-1.9%	75.08
LEGACYFOOT	64.60	7.1%	70.89
MONNOCERA	143.40	8.6%	70.01

Top Gainers/Least Losers			
Company	Closing Price	% Δ	Avg. Daily Turnover (mn)
MONNOSTAF	1934.40	20.57%	11.65
2 STANDARDINS	32.90	16.67%	14.81
3 QUEENSOUTH	50.40	15.60%	88.95
4 SIBL	18.50	9.47%	7.72
5 ARAMITCEM	24.30	9.46%	0.44
6 MONNOCERA	143.40	8.55%	70.01
7 STYLECRAFT	1943.60	8.26%	17.60
8 SEMLIBLSF	8.30	7.79%	3.59
9 EASTRNLUB	1290.80	7.28%	27.69
# LEGACYFOOT	64.60	7.13%	70.89

Market Cap Leaders			
Company	Closing Price	% Δ	Avg. Daily Turnover (mn)
GP	444.30	-4.2%	68.35
SQURPHARMA	296.50	-1.9%	75.08
BATBC	3463.00	1.8%	1.34
UPGDCL	223.20	1.5%	181.15
RENATA	1246.10	0.7%	3.27
ICB	124.80	-2.5%	3.69
BRACBANK	74.00	-5.9%	90.45
LHBL	56.00	-4.8%	25.21
OLYMPIC	250.80	-1.7%	4.28
BERGERPBL	2049.50	0.0%	0.09

Top Losers/Least Gainers			
Company	Closing Price	% Δ	Avg. Daily Turnover (mn)
# ONEBANKLTD	16.30	-24.54%	10.26
# MTB	26.80	-19.03%	2.16
# TUNGHAI	7.20	-13.25%	1.41
# IFIC	13.10	-12.67%	11.72
# EASTLAND	18.70	-12.62%	0.47
# HRTEX	38.70	-12.44%	41.92
# FAREASTFIN	7.00	-11.39%	0.86
# CNATEX	6.50	-10.96%	3.27
# PROGRESLIF	52.80	-10.81%	0.06
# AIL	93.40	-9.14%	16.31

Weekly Money Market Overview



Source: Bangladesh Bank

Weekly Stock Market Report

Sectorwise Traded Scripts

Ticker	Weekly Market Statistics								Market Technical and Fundamental Indicators						
	Close	High	Low	Avg Daily Volume	Avg Daily Turnover (BDTmn)	Δ In Turnover	% of Sector Turnover	Return	RSI****	EMA (10)*****	Market Cap	P/E*	P/B**	ROE***	
Bank															
ABBANK	12.8	13	12.6	290951	3.76	▼ -80%	1.00%	▼ -2.3%	32.07	20.32	16173	548.57	0.66	0%	
ALARABANK	21.5	22	21	399358	8.50	▼ -72%	2.27%	▼ -0.9%	43.20	14.30	22446	7.86	1.14	17%	
BANKASIA	16.1	17	16.0	166809	2.73	▼ -55%	0.73%	▼ -1.2%	34.74	16.21	17877	7.37	0.94	11%	
BRACBANK	74.0	82	73	1158545	90.45	▼ -26%	24.11%	▼ -5.9%	32.49	48.86	79107	14.92	2.97	21%	
CITYBANK	34.1	35	33.1	862685	29.53	▼ -62%	7.87%	▲ 2.4%	34.37	20.06	29865	9.39	1.22	14%	
DHAKABANK	15.9	16	16	1011466	16.19	▲ 7%	4.31%	▼ -1.2%	40.02	19.02	11485	7.03	0.77	11%	
DUTCHBANGL	115.1	122	114.0	60915	7.07	▼ -25%	1.89%	▼ -1.1%	43.92	102.91	23020	9.16	1.30	14%	
EBL	35.7	38	34	236935	9.30	▲ 33%	2.48%	▲ 4.4%	41.01	27.99	26347	13.52	1.26	12%	
EXIMBANK	13.2	14	12.9	1389384	18.60	▼ -50%	4.96%	▼ -0.8%	36.49	8.63	18642	5.22	0.70	13%	
FIRSTSBANK	12.4	13	12	434371	5.37	▼ -2%	1.43%	▲ 1.6%	44.72	8.77	8839	6.72	0.82	13%	
ICBIBANK	4.8	5	4.8	109365	0.53	▼ -13%	0.14%	▼ -4.0%	30.39	4.41	3191	0.00	-0.32	4%	
IFIC	13.1	14	13	887728	11.72	▼ -27%	3.13%	▼ -12.7%	44.05	20.99	9265	6.74	0.75	11%	
ISLAMIBANK	24.5	25	23.4	1166025	28.00	▼ -16%	7.46%	▲ 0.0%	35.11	27.97	39445	8.75	0.81	10%	
JAMUNABANK	19.5	21	19	569198	11.49	▲ 13%	3.06%	▼ -4.4%	41.81	11.80	11975	5.56	0.76	13%	
MERCANBANK	16.8	18	16.7	1255171	21.45	▲ 46%	5.72%	▼ -4.0%	31.01	9.68	13039	4.76	0.78	18%	
MTB	26.8	30	26	77653	2.16	▼ -87%	0.58%	▼ -19.0%	41.93	19.09	15366	7.45	1.57	21%	
NBL	10.9	11	10.8	2114064	23.43	▲ 29%	6.25%	▼ -4.4%	33.63	9.30	25838	5.69	0.72	14%	
NCCBANK	15.5	16	15	473960	7.36	▼ -21%	1.96%	▼ -0.6%	44.14	9.04	13690	7.38	0.83	11%	
ONEBANKLTD	16.3	19	16.1	585798	10.26	▼ -74%	2.74%	▼ -24.5%	36.06	14.59	12494	6.29	0.99	22%	
PRIMEBANK	17.8	18	18	160469	2.87	▼ -25%	0.77%	▼ -3.3%	40.65	18.96	20155	25.30	0.80	5%	
PREMIERBAN	11.3	12	11.0	495967	5.74	▼ -27%	1.53%	▼ -4.2%	35.00	8.19	9041	4.44	0.85	17%	
PUBALIBANK	22.1	23	22	86841	1.92	▼ -60%	0.51%	▼ -0.5%	40.06	20.63	22472	12.86	0.92	7%	
RUPALIBANK	47.0	51	46.5	172629	8.46	▼ -46%	2.26%	▼ -5.2%	39.56	39.81	13623	25.41	1.06	5%	
SHAHJABANK	24.9	25	24	144514	3.59	▼ -66%	0.96%	▼ -2.4%	34.34	12.30	18294	15.28	1.41	10%	
SIBL	18.5	19	16.7	427149	7.72	▲ 142%	2.06%	▲ 9.5%	47.23	13.09	13659	8.26	0.96	11%	
SOUTHEASTB	16.8	18	17	634626	10.83	▲ 51%	2.89%	▼ -5.1%	34.06	16.88	15405	16.97	0.58	4%	
STANDBANKL	11.1	12	10.7	322562	3.73	▼ -26%	0.99%	▼ -2.6%	40.67	9.22	9668	8.38	0.77	10%	
TRUSTBANK	33.2	36	33	310935	10.53	▲ 215%	2.81%	▼ -6.2%	18.45	23.04	18491	10.57	1.61	16%	
UTTARABANK	23.4	24	23.2	312390	7.35	▼ -41%	1.96%	▼ -2.9%	35.99	21.47	9362	6.69	0.70	12%	
UCB	18.2	19	18	244030	4.52	▼ -23%	1.20%	▼ -2.7%	45.03	20.70	19185	6.52	0.74	11%	

Cement

ARAMITCEM	24.3	24.9	22.9	18282	0.44	▼ -51%	1.03%	▲ 9.5%	47.35	36.32	823	0.00	2.18	-23%
CONFIDCEM	146.4	156.3	145.4	83247	12.58	▼ -46%	29.53%	▼ -6.2%	34.29	83.61	7904	18.56	2.09	14%
HEIDELBCEM	375.7	380.4	374.7	9131	2.89	▲ 20%	6.79%	▼ -0.3%	38.67	588.06	21228	28.38	3.80	14%
LHBL	56.0	58.9	55.8	439992	25.21	▼ -42%	59.18%	▼ -4.8%	33.38	83.29	65037	90.32	4.23	5%
MEGHNACEM	93.9	97.4	93.5	4009	0.38	▼ -56%	0.90%	▼ -2.8%	43.54	99.16	2113	26.01	2.56	8%
MICEMENT	80.0	81.6	78.4	11289	0.90	▲ 117%	2.12%	▲ 1.4%	50.29	68.40	11880	39.41	1.67	10%
PREMIERCEM	80.3	81.0	77.4	2419	0.19	▼ -6%	0.46%	▲ 1.4%	48.13	78.83	8468	21.13	1.97	13%

Ceramic

FUWANGCER	15.7	16.5	15.7	303700	4.88	▼ -65%	5.98%	▼ -4.3%	38.57	11.58	1945	22.91	1.74	7%
MONNOCERA	143.4	144.7	129.9	502312	70.01	▲ 46%	85.73%	▲ 8.6%	57.03	34.72	3603	72.04	1.58	0%
RAKCERAMIC	43.0	44.8	42.8	122969	5.38	▼ -39%	6.59%	▼ -2.7%	26.79	66.80	16730	15.47	2.85	18%
SPCERAMICS	17.0	18.0	16.7	52832	0.91	▼ -41%	1.12%	▼ -4.0%	38.18	11.36	2498	34.69	0.56	0%
STANCERAM	114.5	119.0	113.9	4156	0.48	▲ 14%	0.59%	▼ -3.0%	47.14	49.46	740	62.97	6.81	-2%

Engineering

AFTABAUTO	53.7	55.9	53.5	53650	2.92	▼ -50%	0.37%	▼ -2.7%	34.39	53.61	5141	12.26	0.91	7%
ANWARGALV	71.0	73.8	70.4	74215	5.34	▼ -48%	0.68%	▼ -2.5%	38.94	67.61	1031	59.35	8.75	13%
APOLOISPAT	13.5	14.1	13.4	526550	7.21	▼ -16%	0.92%	▼ -3.6%	32.95	0.00	5260	76.94	0.67	6%
ATLASBANG	122.2	126.8	122.0	6211	0.77	▼ -51%	0.10%	▼ -2.3%	35.38	146.89	3680	0.00	0.82	-2%
AZIZPIPES	133.5	143.5	133.2	36146	5.00	▼ -24%	0.64%	▼ -3.7%	42.52	41.38	680	167.01	-2.61	-1%
BBSCABLES	78.8	82.4	77.2	778217	61.99	▼ -54%	7.93%	▼ -3.7%	0.00	0.00	10874	10.19	4.73	25%
BDAUTOCA	114.4	117.5	112.6	34241	3.94	▼ -38%	0.50%	▲ 0.3%	43.85	36.48	442	81.55	41.30	40%
BBS	29.0	31.4	28.9	352357	10.64	▼ -33%	1.36%	▼ -7.9%	31.77	36.44	4091	14.09	2.20	20%
BDLAMPS	173.8	182.9	173.0	14570	2.60	▼ -60%	0.33%	▼ -3.8%	36.11	200.17	1629	36.74	1.85	5%
BDTHAI	24.8	27.0	24.4	1252094	32.11	▼ -60%	4.11%	▼ -7.1%	42.56	31.68	2726	0.00	0.85	-2%
BENGLAWTL	30.1	31.8	30.0	40662	1.26	▼ -35%	0.16%	▼ -4.4%	32.48	52.33	2753	33.72	1.26	7%
BSRMLTD	116.9	120.6	107.0	1325020	150.78	▲ 50%	19.30%	▲ 4.4%	71.07	128.42	25088	18.11	2.31	7%

Weekly Stock Market Report

Sectorwise Traded Script															
Ticker	Weekly Market Statistics									Market Technical and Fundamental Indicators					
	Close	High	Low	Avg Daily Volume	Avg Daily Turnover (BDTmn)	Δ in	Turnover	% of Sector Turnover	Weekly Return	RSI****	EMA (10)*****	Market Cap	P/E*	P/B**	ROE***
Engineering												BDT Mn			
BSRMSTEEL	73.5	78.0	73.2	88637	6.61	▼	0%	0.85%	▼ -4.7%	44	90.58	25120	16.74	2.18	19.1%
DESHBANDHU	16.9	18.6	16.8	510574	9.09	▼	-9%	1.16%	▼ -7.7%	34	11.73	943	31.89	1.51	3.4%
ECABLES	203.2	209.9	193.0	70205	14.24	▲	74%	1.82%	▲ 5.2%	53	132.18	4877	131.10	6.64	3.9%
GOLDENSON	11.2	11.7	11.1	40513	0.46	▲	10%	0.06%	▼ -3.4%	33	25.97	1923	0.00	0.48	-5.3%
GPHISPAT	39.0	40.5	37.2	505614	19.73	▲	53%	2.52%	▼ 0.8%	61	38.06	12770	19.06	2.54	11.6%
IFADAUTOS	114.4	118.2	113.9	486693	56.07	▼	-35%	7.18%	▼ -2.5%	41	105.79	26147	12.67	4.36	26.7%
KAY&QUE	172.0	181.9	160.6	7320	1.25	▼	-2%	0.16%	▲ 2.1%	54	17.88	843	99.42	-14.97	-1.0%
KDSALTD	58.6	60.8	58.0	42531	2.53	▼	-26%	0.32%	▼ -2.8%	46	76.60	3352	26.76	2.36	9.2%
MONNOSTAF	1934.4	1992.9	1610.0	6198	11.65	▲	119%	1.49%	▲ 20.6%	82	260.44	890	661.58	42.58	1.1%
NAHEEACP	45.5	50.3	45.0	444473	21.10	▼	-52%	2.70%	▼ -7.7%	36	260.44	2184	9.21	4.31	26.5%
NAVANACNG	72.6	74.6	71.1	490212	35.39	▼	-68%	4.53%	▼ -2.8%	63	45.40	4975	25.21	2.16	9.3%
NPOLYMAR	80.0	83.8	79.0	75269	6.17	▲	1%	0.79%	▼ -1.8%	50	90.10	1961	28.93	1.90	6.6%
NTLTUBES	110.1	116.8	109.8	120980	13.76	▼	-15%	1.76%	▼ -3.8%	32	90.07	3168	0.00	0.55	-1.3%
OAL	15.4	16.3	15.4	229063	3.63	▼	-56%	0.47%	▼ -4.3%	37	32.35	2373	14.57	1.05	8.2%
OIMEX	40.9	43.5	40.7	276844	11.62	▼	-54%	1.49%	▼ -4.7%	42	32.35	2065	18.75	3.94	19.5%
QUASEMIND	63.1	68.7	62.9	88990	5.86	▼	-25%	0.75%	▼ -7.5%	31	97.12	3315	37.39	1.67	4.9%
RANFOUNDRY	132.4	137.0	132.0	12291	1.64	▼	-65%	0.21%	▼ -1.3%	43	100.77	1324	33.52	5.58	17.5%
RENWICKJA	603.9	642.0	592.0	6267	3.89	▼	0%	0.50%	▲ 2.3%	44	247.64	1208	142.09	-16.93	-12.5%
RSRMSTEEL	53.0	56.8	52.3	367730	19.93	▼	-33%	2.55%	▼ -5.4%	49	48.13	5363	7.14	1.39	20.0%
SALAMCRST	33.1	35.4	33.0	198602	6.73	▼	-58%	0.86%	▼ -4.6%	51	27.72	3256	22.36	1.69	5.7%
SHURWID	18.5	18.9	17.8	199618	3.67	▼	-10%	0.47%	▲ 2.2%	53	0.00	965	0.00	1.53	-4.7%
SINGERBD	172.3	176.0	168.5	50312	8.70	▼	-18%	1.11%	▲ 1.2%	47	153.16	13214	16.50	6.79	44.6%
WMSHIPYARD	32.2	35.2	32.0	6885362	230.80	▲	10%	29.54%	▼ -3.0%	64	32.77	4781	12.18	0.94	6.5%
YPL	17.7	18.6	17.7	127657	2.32	▼	-45%	0.30%	▼ -4.8%	40	0.00	1206	2186.47	1.98	6.4%
Financial Institution															
BAYLEASING	21.6	23.0	21.0	35719	0.78	▲	12%	0.67%	▼ -5.7%	37	18.80	2969	20.52	1.12	6.0%
BDFINANCE	17.2	17.4	15.8	297742	5.00	▼	-24%	4.28%	▲ 1.8%	34	10.31	2381	12.93	1.19	14.7%
BIFC	7.0	8.0	6.9	44855	0.32	▼	-14%	0.27%	▼ -5.4%	20	8.10	705	0.00	2.22	-121.3%
DBH	133.9	135.6	133.0	29327	3.96	▼	-24%	3.39%	▼ -0.1%	47	106.19	16316	16.45	4.52	29.7%
FAREASTFIN	7.0	8.0	7.0	123235	0.86	▲	44%	0.74%	▼ -11.4%	19	9.48	1148	0.00	0.56	-44.8%
FASFIN	11.7	12.4	11.6	320706	3.88	▼	-52%	3.33%	▼ -2.5%	34	10.54	1661	11.47	1.03	9.0%
FIRSTFIN	7.3	8.0	7.0	71809	0.54	▲	12%	0.46%	▼ -7.6%	25	11.10	891	0.00	0.60	-21.4%
GSPFINANCE	16.9	18.0	16.8	432831	7.45	▲	75%	6.38%	▼ -4.5%	25	14.28	2184	5.63	0.86	18.5%
ICB	124.8	130.0	124.4	28962	3.69	▼	-40%	3.17%	▼ -2.5%	33	113.22	82924	19.37	2.21	12.3%
IDLC	68.5	70.8	66.6	312772	21.36	▲	43%	18.31%	▲ 2.5%	43	62.23	25828	11.83	2.89	27.6%
ILFSL	17.5	20.0	17.4	597136	11.00	▲	5%	9.42%	▼ -1.1%	42	9.23	3144	9.41	1.35	16.4%
IPDC	32.4	34.0	32.2	99889	3.28	▼	-31%	2.81%	▼ -4.7%	37	29.21	7068	21.29	2.55	12.8%
ISLAMICFIN	15.8	16.4	15.6	83400	1.34	▼	-51%	1.15%	▼ -3.1%	27	15.37	1911	10.26	1.12	13.2%
LANKABAFIN	26.0	28.3	25.9	1570279	42.13	▼	-6%	36.11%	▼ -5.5%	27	29.23	13343	5.07	2.00	44.0%
MIDASFIN	26.5	27.9	25.3	20536	0.55	▼	-86%	0.47%	▼ -8.3%	38	14.90	3187	16.77	2.76	21.3%
NHFIL	39.0	40.1	38.1	15680	0.61	▼	-44%	0.52%	▲ 0.5%	55	27.69	4149	16.25	2.53	15.9%
PHOENIXFIN	32.1	33.5	32.0	21024	0.68	▼	-46%	0.58%	▼ -1.5%	39	19.84	3900	14.14	1.48	11.0%
PLFSL	10.0	10.3	9.9	199291	2.01	▼	-48%	1.72%	▼ -2.9%	39	14.71	2854	6.80	0.92	-13.2%
PREMIERLEA	11.2	12.2	11.0	89385	1.05	▼	-68%	0.90%	▼ -7.4%	27	8.66	1418	15.18	0.97	9.8%
PRIMEFIN	9.2	9.9	9.1	98718	0.93	▲	202%	0.79%	▼ -6.1%	25	11.43	2511	0.00	0.90	-14.1%
UNIONCAP	13.1	14.7	13.0	150636	2.06	▼	-4%	1.77%	▼ -9.0%	26	14.59	2051	18.29	0.81	6.2%
UNITEDFIN	17.0	17.4	16.9	103800	1.77	▲	44%	1.51%	▲ 0.0%	40	20.93	3029	12.70	1.03	8.7%
UTTARAFIN	57.0	59.5	56.0	24495	1.42	▲	34%	1.22%	▼ -2.9%	31	57.83	7138	7.82	1.25	16.6%
Food & Allied															
AMCL(PRAN)	215.5	220.5	215.1	6752	1.47	▼	-58%	1.09%	▼ -1.7%	40	189.89	1724	30.92	3.54	12.0%
APEXFOODS	249.4	265.0	241.2	52440	13.21	▼	-38%	9.79%	▼ -1.4%	50	107.87	1422	127.24	2.53	1.6%
BANGAS	243.1	260.0	242.0	3157	0.79	▼	-67%	0.59%	▼ -4.4%	27	286.54	1535	900.37	12.12	-5.2%
BATBC	3463.0	3559.9	3385.1	387	1.34	▼	-10%	0.99%	▲ 1.8%	55	2911.67	207780	24.78	23.34	105.7%
BEACHHATCH	13.5	14.0	13.5	31793	0.44	▼	-35%	0.33%	▼ -1.5%	34	13.23	559	0.00	1.20	-3.8%
EMERALDOIL	12.3	13.4	12.2	41212	0.53	▼	-41%	0.39%	▼ -6.8%	18	52.07	734	0.00	1.10	37.2%
FINEFOODS	33.4	35.8	33.2	467539	16.07	▲	19%	11.91%	▼ -0.9%	42	8.16	453	0.00	3.34	6.4%
FUWANGFOOD	17.7	18.7	17.5	740370	13.46	▼	-41%	9.98%	▼ -3.8%	37	16.68	1784	22.75	2.13	7.8%
GEMINISEA	404.1	419.4	401.3	19881	8.16	▼	-25%	6.05%	▼ -0.3%	40	387.40	1500	79.29	-316.58	598.9%
GHAIL	35.7	38.3	35.0	285818	10.67	▲	16%	7.91%	▼ -4.8%	33	22.99	3892	18.66	2.06	13.2%
MEGCONMILK	29.1	31.4	29.0	14155	0.42	▼	-20%	0.31%	▼ -2.7%	41	7.11	466	0.00	-1.23	36.4%
MEGHNA PET	24.7	26.8	24.1	14032	0.35	▼	-41%	0.26%	▼ -3.1%	49	5.46	296	0.00	-16.27	31.6%
NTC	607.8	620.4	605.0	11449	7.00	▼	-8%	5.19%	▼ -1.0%	41	605.89	4011	36.29	4.84	11.5%
OLYMPIC	250.8	259.0	250.4	16916	4.28	▼	-47%	3.17%	▼ -1.7%	23	283.63	50145	29.54	19.88	89.1%

Weekly Stock Market Report

Sectorwise Traded Script

Ticker	Weekly Market Statistics									Market Technical and Fundamental Indicators						
	Close	High	Low	Avg Daily Volume	Avg Daily Turnover (BDTmn)	Δ (%)	Turnover	% of Sector Turnover	Weekly Return	RSI****	EMA (10)****	Market Cap	P/E*	P/B**	ROE***	
Food & Allied																
RAHIMAFOOD	150.1	156.9	146.0	18867	2.83	▲	1%	2.10%	▼	-4%	44.91	42.99	3002	17.17	41.11	-4.4%
RDFOOD	18.1	19.6	17.9	2779630	52.66	▲	23%	39.03%	▼	-3.2%	57.78	14.21	1190	32.53	1.36	4.3%
SHYAMPSUG	45.6	46.8	38.0	15336	0.66	▲	2%	0.49%	▲	3.4%	43.00	6.26	228	0.00	54.66	38.2%
ZEALBANGLA	56.2	58.1	54.0	10274	0.58	▲	69%	0.43%	▲	1.4%	45.84	6.83	337	0.00	-0.25	26.8%
Fuel & Power																
BARKAPOWER	29.2	30.7	29.0	302577	9.02	▼	-25%	1.13%	▼	-2.7%	36.24	29.97	5842	17.07	1.67	13.5%
BDWELDING	17.9	19.7	17.4	40041	0.75	▼	-37%	0.09%	▼	-8.7%	26.10	17.70	768	8.21	1.42	13.5%
CVOPRL	206.1	214.9	205.1	70052	14.67	▼	-48%	1.83%	▼	-1.9%	37.16	345.96	5203	0.00	14.43	-19.5%
LINDEBD	1248.1	1259.4	1244.5	4081	5.11	▼	-33%	0.64%	▼	-0.2%	47.28	1156.26	18994	19.54	5.96	31.9%
DESCO	42.0	44.8	41.6	41267	1.77	▼	-79%	0.22%	▼	-2.1%	43.24	53.57	16698	94.19	1.11	1.2%
DOREENPWR	104.8	111.1	104.6	430744	46.01	▼	-52%	5.74%	▼	-5.5%	45.48	53.57	11067	13.43	5.14	34.8%
EASTRNLUB	1290.8	1355.0	1177.0	21441	27.69	▲	84%	3.45%	▲	7.3%	56.46	322.34	1283	22.79	9.02	31.9%
GBBPOWER	15.0	15.5	14.9	82783	1.25	▼	-20%	0.16%	▼	-3.2%	36.49	16.38	1527	18.63	0.75	5.5%
INTRACO	43.6	66.0	43.0	9660473	443.06	▲	0%	55.28%	0	0.00	0.00	0.00	3270	101.40	5.13	0.0%
JAMUNAOIL	183.0	186.9	182.5	16012	2.95	▼	-37%	0.37%	▼	-1.1%	45.17	183.11	20208	8.38	1.28	14.5%
KPCL	55.2	55.6	53.9	138290	7.57	▲	132%	0.95%	▲	1.7%	53.63	72.48	19943	10.86	2.07	19.7%
MJLBD	101.7	108.0	101.2	145879	15.17	▼	-28%	1.89%	▼	-4.6%	41.21	87.83	30680	14.70	2.91	21.0%
MPETROLEUM	182.7	187.6	182.1	13195	2.45	▲	62%	0.31%	▼	-1.6%	42.85	175.19	19771	7.58	2.00	23.5%
PADMAOIL	229.5	231.0	228.4	10990	2.53	▼	-40%	0.32%	▼	-0.4%	46.18	201.74	22544	9.21	2.47	23.4%
POWERGRID	46.7	48.5	46.5	52910	2.50	▼	-63%	0.31%	▼	-2.3%	33.28	45.78	21525	8.58	0.52	5.2%
SPCL	90.7	94.7	90.5	253426	23.66	▼	-30%	2.95%	▼	-3.3%	40.75	134.84	14605	20.17	3.00	19.1%
SUMITPOWER	36.5	37.5	36.4	292440	10.79	▼	-49%	1.35%	▼	-2.1%	46.28	36.32	38978	8.49	1.26	13.8%
TITASGAS	38.7	39.2	38.6	85602	3.33	▼	-51%	0.42%	▼	-0.8%	34.58	53.90	38283	9.04	0.59	8.1%
UPGDCL	223.2	229.1	207.0	832355	181.15	▲	8%	22.60%	▲	1.5%	73.68	140.53	89110	20.62	5.96	30.5%
Insurance																
AGRANINS	17.2	18.0	17.1	7354	0.13	▲	93%	0.12%	▼	-4.4%	35.96	14.21	472	9.59	1.03	11.1%
ASAIANS	19.0	19.2	17.8	5923	0.11	▲	220%	0.10%	▲	3.8%	62.62	14.27	894	11.05	1.06	10.0%
ASIAPACINS	24.3	24.8	23.7	9335	0.23	▲	637%	0.21%	▲	3.4%	48.80	14.44	1029	10.52	1.47	13.1%
BGIC	19.0	19.5	18.4	11396	0.21	▼	-58%	0.20%	▲	0.5%	44.71	16.96	1027	17.12	0.98	5.6%
BNICL	16.0	16.3	15.9	84484	1.36	▲	12%	1.29%	▲	0.0%	47.16	14.44	708	9.36	0.99	12.3%
CENTRALINS	20.1	21.9	19.9	7312	0.15	▼	-1%	0.15%	▼	-2.4%	40.94	17.41	946	11.34	0.92	8.1%
CITYGENINS	14.0	14.3	13.7	53012	0.74	▲	28%	0.70%	▲	1.4%	44.77	12.28	954	16.38	1.07	8.3%
CONTININS	16.5	17.8	16.3	17068	0.27	▲	249%	0.25%	▼	-6.3%	29.05	14.60	543	11.00	0.89	8.3%
DHAKAINS	20.5	21.2	19.9	16686	0.34	▲	46%	0.32%	▲	0.5%	46.06	16.43	823	10.68	1.18	11.0%
EASTERNINS	29.0	29.1	27.5	35039	0.99	▲	525%	0.94%	▲	6.6%	58.79	25.11	1250	8.33	0.78	9.5%
EASTLAND	18.7	22.3	18.6	23316	0.47	▼	-13%	0.45%	▼	-12.6%	43.63	19.87	1381	9.20	0.83	9.3%
FEDERALINS	10.0	10.2	9.9	88671	0.89	▲	14%	0.85%	▼	-1.0%	37.22	10.23	625	16.81	0.93	5.5%
GLOBALINS	12.6	13.8	12.5	17185	0.22	▲	12%	0.21%	▼	-7.4%	34.26	12.18	441	32.31	1.10	3.8%
GREENDELTA	58.5	63.0	57.2	34925	2.05	▼	-27%	1.95%	▲	0.2%	50.82	47.74	4720	20.53	0.79	4.1%
ISLAMIINS	28.0	29.5	27.0	123463	3.46	▲	17%	3.29%	▲	2.9%	48.87	14.84	950	18.60	2.26	12.3%
JANATAINS	15.0	16.0	14.8	2034	0.03	▲	121%	0.03%	▼	-6.2%	43.54	12.30	575	18.99	1.12	3.8%
KARNAPHULI	15.6	16.0	15.5	31525	0.40	▼	-46%	0.38%	▼	-1.3%	48.05	12.03	635	10.26	0.80	8.1%
MERCINS	26.6	27.6	25.6	303194	8.04	▲	9%	7.65%	▲	0.8%	71.25	12.09	1146	20.31	1.53	7.6%
NITOLINS	29.5	29.5	29.3	1183	0.04	▼	-45%	0.03%	▲	0.7%	61.31	21.36	1186	11.64	1.57	13.8%
NORTHNRINS	18.2	18.8	17.9	13962	0.26	▼	-81%	0.25%	▼	-2.7%	34.32	17.16	776	11.02	0.99	9.3%
PARAMOUNT	15.0	15.4	14.5	34148	0.51	▼	-38%	0.49%	▲	0.0%	40.91	11.24	431	10.53	1.14	11.3%
PEOPLESINS	19.0	20.8	19.0	42527	0.83	▲	501%	0.79%	▼	-2.6%	39.79	14.04	878	8.56	0.83	9.7%
PHENIXINS	25.9	26.2	24.2	11380	0.29	▲	46%	0.27%	▲	6.1%	57.77	23.62	1045	9.42	0.75	7.8%
PIONEERINS	27.9	28.9	27.0	57315	1.61	▲	158%	1.53%	▼	-0.4%	49.89	30.14	1952	7.77	0.88	11.7%
PRAGATIINS	24.9	25.9	24.6	33325	0.84	▼	-4%	0.80%	▲	0.8%	45.73	24.79	1454	8.83	0.47	5.2%
PRIMEINSUR	16.5	18.0	16.5	67094	1.15	▲	471%	1.09%	▼	-3.5%	41.97	14.62	674	9.38	1.01	13.5%
PROVATIINS	16.3	17.3	16.3	47069	0.78	▼	-39%	0.75%	▼	-5.2%	28.59	12.98	484	9.42	1.04	11.5%
PURABIGEN	14.0	14.6	13.9	44808	0.64	▼	-36%	0.61%	▼	-2.1%	38.99	12.38	691	11.84	1.32	15.4%
RELIANCINS	49.1	50.2	48.7	20528	1.02	▲	29%	0.97%	▼	-1.8%	44.10	48.57	3879	9.23	0.88	9.7%
REPUBLIC	24.5	26.3	22.7	3980	0.10	▼	-97%	0.09%	▲	0.0%	52.31	13.83	965	15.46	2.09	13.7%
RUPALIINS	17.3	17.5	16.9	34816	0.60	▼	-45%	0.57%	▲	1.8%	38.01	16.41	1148	8.56	0.73	8.6%
SONARBAINS	15.1	15.5	15.0	27050	0.41	▲	188%	0.39%	▼	-0.7%	42.70	16.02	519	10.23	0.99	9.8%
STANDARINS	32.9	33.7	28.8	457024	14.81	▲	1098%	14.09%	▲	16.7%	61.06	13.23	1070	19.82	1.91	11.1%
TAKAFULINS	22.9	24.7	22.7	8596	0.20	▲	179%	0.19%	▼	-4.6%	41.86	15.80	920	13.77	1.52	12.3%
UNITEDINS	21.7	25.3	21.5	8555	0.20	▲	37%	0.19%	▼	-7.7%	26.12	23.40	911	10.28	0.76	8.8%

Weekly Stock Market Report

Script	Weekly Market Statistics									Market Technical and Fundamental Indicators						
	Ticker	Close	High	Low	Avg Daily Volume	Avg Daily Turnover (BDTmn)	Δ III	% Of Sector Turnover	weekly Return	RSI****	EMA (40)****	Market Cap	P/E*	P/B**	ROE***	
Life Insurance																
DELTALIFE	103.1	107.6	101.5	73678	8.07	▼	-36%	7.67%	▼	-3%	38	96	12758.6	0.0	0	0
FAREASTLIF	69.1	74.0	67.0	43844	3.15	▼	-26%	3.00%	▼	-6%	35	64	5164.7	0.0	0	0
MEGHNALIFE	57.3	60.0	56.1	26655	1.55	▼	-72%	1.47%	▼	-3%	38	48	1920.8	0.0	0	0
NATLIFEINS	150.1	155.0	149.0	1512	0.23	▼	-26%	0.22%	▼	-1%	46	192	14164.5	0.0	0	0
PADMALIFE	36.1	39.4	35.4	180050	6.76	▼	-49%	6.43%	▼	-6%	29	29	1169.6	0.0	0	0
POPULARLIF	91.7	98.9	91.2	48373	4.59	▼	-42%	4.36%	▼	-4%	39	72	5541.3	0.0	0	0
PRAGATILIF	96.5	103.8	96.0	13429	1.34	▼	-20%	1.27%	▼	-4%	31	107	1000.9	0.0	0	0
PRIMELIFE	47.1	52.8	46.5	32409	1.60	▼	-32%	1.52%	▼	-7%	33	37	1437.5	0.0	0	0
PROGRESLIF	52.8	63.9	51.0	1145	0.06	▼	-85%	0.06%	▼	-10.8%	25	55	679.3	0.0	0	0
RUPALILIFE	62.2	65.0	60.0	505952	31.66	▼	-51%	30.12%	▼	-4.0%	57	30	1725.4	0.0	0	0
SANDHANINS	26.9	28.7	26.6	57338	1.58	▼	-15%	1.51%	▼	-5.6%	33	35	2459.1	0.0	0	0
SUNLIFEINS	22.4	23.4	21.7	7759	0.17	▼	-13%	0.17%	▼	-1.8%	43	26	785.3	0.0	0	0
IT Sector																
AAMRATECH	29.6	31.4	29.5	104578	3.17	▼	-0.70	3.62%	▼	-4.5%	38.80	26.77	1638.9	15.33	1.31	6.8%
AAMRANET	93.0	97.8	91.2	369786	34.56	▼	-0.10	39.37%	▼	-3.6%	40.25	26.77	4932.8	17.78	4.83	12.7%
AGNISYSL	20.4	21.3	20.2	272347	5.67	▼	-0.66	6.46%	▼	-2.9%	40.76	20.23	1409.7	19.06	1.42	6.9%
BDCOM	29.5	30.5	29.2	396244	11.80	▼	-0.54	13.45%	▼	-1.0%	48.85	23.00	1372.4	21.43	2.03	9.9%
DAFODILCOM	36.7	40.6	36.5	279320	10.76	▼	-0.56	12.26%	▼	-7.6%	43.42	18.77	1831.8	15.13	2.78	16.9%
INTECH	17.7	18.8	17.6	224164	4.11	▼	-0.66	4.68%	▼	-3.3%	41.65	11.99	454.0	15.40	1.58	10.2%
ISNLTD	21.0	21.9	20.8	8271	0.18	▼	-0.52	0.20%	▼	-1.9%	36.49	12.31	229.3	0.00	1.51	-3.7%
ITC	33.8	37.7	33.6	489146	17.53	▲	0.80	19.97%	▼	-0.9%	55.49	0.00	3517.0	29	2.17	6.6%
Miscellaneous																
AMANFEED	54.5	57.0	54.4	143013	8.02	▼	-13%	2.87%	▼	-2.0%	32.60	44.33	6330.7	13.50	2.20	20.3%
ARAMIT	336.5	345.0	336.5	2169	0.74	▼	-65%	0.26%	▼	-0.4%	41.55	459.86	2019.0	39	2.17	5.5%
BERGERPBL	2049.5	2095.0	2045.0	43	0.09	▼	-95%	0.03%	▼	0.0%	33.76	1930.59	47525.7	28.57	8.21	35.2%
BEXIMCO	26.9	30.5	26.8	5144518	147.74	▼	-46%	52.89%	▼	-7.9%	35.14	28.36	22450.5	19	0.37	1.7%
BSC	42.1	43.5	41.9	248526	10.61	▼	-26%	3.80%	▼	-0.9%	40.30	328.24	6421.7	46.02	0.77	1.1%
GQBALLPEN	70.6	73.0	70.1	13555	0.97	▼	-28%	0.35%	▼	-3.2%	28.20	61.24	630.3	-	0.44	1.1%
KBPPWBIL	16.0	17.0	15.9	284701	4.66	▼	-59%	1.67%	▼	-4.2%	41.04	21.48	1569.3	19.33	1.35	6.4%
MIRACLEIND	41.6	46.7	41.3	1205504	52.92	▼	-43%	18.95%	▼	-9.0%	48.12	22.54	1219.0	33	0.95	2.9%
NFML	14.0	14.7	14.0	117682	1.69	▼	-52%	0.60%	▼	-4.1%	36.13	18.03	1129.9	17.27	1.11	8.3%
SAVAREFR	147.5	155.0	141.1	783	0.12	▲	93%	0.04%	▼	-4.5%	41.14	46.58	205.4	311	24.14	2.8%
SINOBANGLA	50.6	54.8	50.0	968168	51.20	▲	32%	18.33%	▼	-2.5%	56.26	26.58	1011.8	31.13	1.93	6.2%
ZEALBANGLA	56.2	58.1	54.0	10274	0.58	▲	69%	0.21%	▲	1.4%	45.84	6.83	337.2	-	-0.25	26.8%
Pharmaceuticals & Chemicals																
ACI	367.5	371.0	347.2	65268	23.63	▲	39%	7.09%	▲	4.7%	40.81	526.17	17714.4	23	1.68	10.5%
ACIFORMULA	175.9	182.9	175.0	32493	5.84	▲	-38%	1.75%	▼	-1.6%	38.24	174.12	7915.5	56.93	3.24	11.2%
ACMELAB	97.2	102.9	95.0	107474	10.77	▲	28%	3.23%	▼	-4.9%	20.27	0.00	20567.7	14	1.81	12.7%
ACTIVEFINE	29.8	31.5	29.6	149888	4.59	▼	-41%	1.38%	▼	-3.9%	28.74	56.04	5958.4	8.78	1.52	18.3%
ADVENT	38.1	39.2	36.5	963427	36.61	▼	-41%	10.99%	▼	-1.0%	41.85	0.00	2613.7	39	4.32	0.0%
AFCAGRO	36.9	39.0	36.7	101092	3.84	▼	-57%	1.15%	▼	-5.1%	41.09	66.76	3360.9	12.65	2.54	22.2%
AMBEEPFA	444.8	467.5	432.0	19195	8.72	▲	29%	2.62%	▲	1.9%	56.30	252.53	1067.5	138	17.62	12.1%
BEACONPHAR	19.3	20.5	19.2	125805	2.50	▼	-41%	0.75%	▼	-3.5%	39.07	14.68	4458.3	36.42	1.49	3.5%
BXPHARMA	99.9	104.0	99.0	190612	19.59	▲	6%	5.88%	▼	-3.4%	32.75	75.61	40515.1	16	1.62	9.3%
BXSYNTH	9.9	10.4	9.8	49396	0.50	▼	-42%	0.15%	▼	-2.9%	36.28	8.09	858.5	0.00	0.48	-11.9%
CENTRALPHL	14.8	15.7	14.7	228409	3.47	▼	-27%	1.04%	▼	-4.5%	32.94	21.92	1688.6	58	0.97	6.5%
FARCHEM	16.8	17.5	16.7	236866	4.05	▼	-40%	1.22%	▼	-2.9%	44.19	30.74	3028.1	12.40	1.21	12.3%
GHCL	38.1	40.4	37.9	37022	1.44	▼	-61%	0.43%	▼	-3.8%	44.02	37.37	2743.2	33	0.71	2.0%
GLAXOSMITH	1428.4	1474.0	1425.0	232	0.33	▼	-45%	0.10%	▼	-2.3%	38.56	1798.16	17207.1	27.26	6.65	25.8%
IBNSINA	252.1	261.8	250.0	35177	9.06	▼	-73%	2.72%	▼	-2.7%	43.07	150.72	7191.6	27	6.51	23.8%
IMAMBUTTON	28.7	31.8	28.0	9775	0.29	▼	-38%	0.09%	▼	-6.5%	33.29	8.98	221.0	0.00	4.62	-5.9%
JMISMDL	181.4	191.7	180.2	53652	9.99	▼	-76%	3.00%	▼	-3.5%	45.58	155.76	1995.4	26	2.68	10.3%
KEYACOSMET	9.8	10.1	9.7	2751624	27.33	▼	-49%	8.20%	▼	-2.0%	40.60	14.28	9820.6	5.41	0.77	14.0%
KOHINOOR	376.0	389.5	375.2	3459	1.31	▼	-55%	0.39%	▼	-1.8%	41.18	342.06	5269.9	32	9.51	30.2%
LIBRAINFU	523.1	555.0	516.0	9040	4.86	▼	-4%	1.46%	▲	0.8%	38.83	288.53	654.7	0.00	0.33	0.3%
MARICO	1168.4	1249.0	1135.0	161	0.19	▼	-60%	0.06%	▼	-2.0%	42.24	1500.74	36804.6	24	23.29	87.6%
ORIONINFU	49.8	53.6	49.7	31039	1.57	▼	-29%	0.47%	▼	-1.4%	32.84	49.37	1013.9	35.07	3.96	12.0%
ORIONPHARM	42.5	44.5	42.5	56459	2.45	▼	-45%	0.74%	▼	-3.4%	24.47	34.22	9945.0	14	0.60	4.8%
PHARMAID	465.1	485.0	460.0	46652	22.08	▼	-10%	6.63%	▼	-1.1%	42.89	229.24	1451.1	31.75	9.39	20.4%
RECKITTBN	1773.3	1883.0	1770.0	644	1.16	▼	-38%	0.35%	▼	-0.5%	41.89	1580.74	8378.8	23	35.45	172.5%
RENATA	1246.1	1250.0	1236.0	2638	3.27	▼	-22%	0.98%	▲	0.7%	51.24	1220.37	87265.7	28.89	6.74	22.4%
SALVOCHEM	27.7	28.9	26.8	1515335	42.06	▼	-19%	12.62%	▲	0.0%	61.25	13.38	1715.4	40	2.44	6.9%
SQURPHARMA	296.5	304.9	295.5	249409	75.08	▼	-39%	22.53%	▼	-1.9%	24.64	249.04	218636.5	18.74	4.46	23.8%
WATACHEM	302.2	316.8	301.7	21277	6.62	▼	-38%	1.99%	▼	-2.8%	37.30	150.68	2756.6	84	4.09	5.4%

Weekly Stock Market Report

Sectorwise Traded Script

Ticker	Weekly Market Statistics								Market Technical and Fundamental Indicators					
	Close	High	Low	Avg Daily Volume	Avg Daily Turnover (BDTmn)	Δ in Turnover	% of Sector Turnover	Weekly Return	RSI****	EMA (10)****	Market Cap	Training P/E*	P/B**	ROE***
Service&RealEstate														
EHL	46.8	49.5	46.6	68037	3.24	▼ -76%	13.66%	▼ -4%	40.30	34.06	4369	15.86	2.94	15.5%
SAIFPOWER	25.3	27.4	25.0	553457	14.55	▼ -36%	61.27%	▼ -6%	34.56	71.78	2942	52.71	0	0
SAMORITA	70.0	73.9	69.7	13268	0.95	▼ -24%	3.98%	▼ -4%	31.17	76.70	1258	72.71	1.62	8.0%
SAPORTL	28.6	31.6	28.2	165337	5.01	▼ -51%	21.09%	▼ -8%	38.33	55.12	6484	44.00	1.14	2.6%
Tannery														
APEXFOOT	305.6	320.0	305.0	11505	3.57	▲ 78%	3.69%	▼ -3%	32.35	334.38	3438	35.91	1.34	3.3%
APEXTANRY	138.6	141.1	138.0	12512	1.75	▼ -51%	1.81%	▼ -1%	39.47	114.19	2112	51.33	1.88	4.0%
BATASHOE	1136.0	1145.0	1130.4	1133	1.29	▼ -76%	1.33%	▲ 0%	39.88	1326.22	15540	13.80	4.37	34.5%
FORTUNE	29.2	31.0	29.1	620591	18.61	▼ -47%	19.24%	▼ -5%	35.26	0.00	3172	16.48	0	0
LEGACYFOOT	64.6	66.8	58.7	1114310	70.89	▲ 152%	73.27%	▲ 7%	63.87	25.79	735	114.98	8.90	3.5%
SAMATALETH	57.8	62.8	55.5	10975	0.64	▼ -25%	0.67%	▲ 1%	45.18	23.02	596	0.00	3.92	-1.1%
Telecommunication														
GP	444.3	468.9	443.0	149698	68.35	▼ -28%	97.36%	▼ -4%	26.54	253.07	599938	22.01	17.87	85.4%
BSCCL	90.6	92.3	90.1	20419	1.86	▼ -33%	2.64%	▼ -2%	37.28	103.56	14940	90.60	2.49	5.5%
Travel&Leisure														
PENINSULA	23.8	26.1	23.7	1453889	36.55	▲ 106%	62.10%	▼ -1%	50.91	16.91	2824	54.09	0.78	1.7%
UNITEDAIR	4.2	4.5	4.1	591535	2.54	▼ -19%	4.31%	▼ -5%	28.52	8.87	2887	0.00	0.43	-16.3%
UNIQUEHRL	51.9	55.3	51.6	366889	19.77	▼ -18%	33.60%	▼ -5%	26.84	45.32	15279	25.44	0.58	2.0%
Jute														
JUTESPINN	150.5	166.0	144.5	1132	0.18	▼ -23%	0.77%	▼ -7%	35.29	48.34	256	0.00	-0.76	28.7%
NORTHERN	337.1	372.9	336.0	33506	11.87	▼ -1%	52.18%	▼ -4%	31.85	256.61	722	0.00	4.44	5.8%
SONALIANSH	286.9	313.8	284.0	35521	10.70	▼ -35%	47.05%	▼ -2%	50.88	124.26	778	156.78	1.28	0.7%
Textile														
AL-HAJTEX	74.3	79.1	74.0	35609	2.75	▲ 21%	0.65%	▼ -4%	25.11	102.83	1506	101.40	6.01	13.4%
ALLTEX	10.1	10.6	10.0	24534	0.25	▼ -36%	0.06%	▼ -4%	24.19	20.53	565	0.00	0.40	-8.0%
ANLIMAYARN	29.5	30.4	29.3	95871	2.87	▼ -61%	0.68%	▼ -3%	41.51	19.33	527	70.24	2.67	5.0%
APEXSPINN	118.5	125.5	118.1	32596	3.96	▼ -9%	0.94%	▼ -3%	41.15	74.10	995	42.02	2.25	5.3%
ARGONDENIM	26.2	27.9	26.0	212617	5.70	▼ -56%	1.35%	▼ -6%	43.46	24.01	3143	8.13	1.07	12.4%
ALIF	11.9	12.6	11.8	1818906	22.20	▼ -52%	5.25%	▼ -4%	42.66	12.89	1302	6.33	0.70	11.8%
CNATEX	6.5	7.4	6.5	471487	3.27	▲ 18%	0.77%	▼ -11%	17.62	11.60	1556	11.28	0.43	7.0%
DACCADYE	7.8	8.1	7.7	55011	0.44	▲ 25%	0.10%	▼ -4%	27.24	14.14	680	0.00	0.51	-22.9%
DELTA SPINN	8.5	8.9	8.5	317938	2.77	▼ -31%	0.65%	▼ -3%	40.03	9.54	1415	39.45	0.65	2.0%
DSHGARME	214.5	225.0	212.0	16503	3.60	▼ -8%	0.85%	▲ 1%	44.90	131.08	1297	42.08	14.01	44.6%
DSSL	20.6	22.1	20.5	3165878	66.92	▼ -34%	15.82%	▼ -5%	47.86	0.00	2724	11.32	2.42	13.5%
DULAMIACOT	40.4	41.5	36.0	4215	0.17	▼ -64%	0.04%	▲ 6%	44.77	7.03	305	0.00	4.03	-37.4%
ENVOYTEX	29.7	31.4	29.6	110070	3.37	▲ 61%	0.80%	▼ -2%	39.65	46.38	4884	14.49	0.81	5.4%
ETL	15.7	15.9	15.1	641611	9.95	▼ -48%	2.35%	▼ -1%	56.75	0.00	2487	11.91	1.17	8.8%
FAMILYTEX	6.5	6.8	6.5	416910	2.75	▼ -17%	0.65%	▼ -3%	28.76	11.17	2088	0.00	0.50	0.0%
FEKDIL	15.0	16.0	15.0	152752	2.36	▼ -46%	0.56%	▼ -4%	30.57	23.12	2785	8.96	0.82	10.6%
GENNEXT	8.6	9.0	8.6	1097291	9.68	▼ -53%	2.29%	▼ -3%	34.35	9.34	3870	9.92	0.74	4.7%
HFL	25.0	26.3	24.8	244339	6.14	▼ -37%	1.45%	▼ -3%	45.82	21.07	2276	16.03	0.66	2.1%
HRTEX	38.7	44.4	38.5	1021557	41.92	▼ -41%	9.91%	▼ -12%	52.53	21.56	979	23.31	2.64	9.9%
HWAWELLTEX	36.8	38.7	36.6	5512	0.21	▼ -91%	0.05%	▼ -2%	43.33	29.11	2061	15.66	1.30	7.5%
MAKSONSPIN	9.4	10.0	9.3	888596	8.62	▼ -58%	2.04%	▼ -5%	38.82	8.19	2239	20.65	0.50	1.7%
MALEKSPIN	18.2	19.0	17.8	54709	1.01	▼ -19%	0.24%	▼ -3%	36.35	16.26	3524	12.30	0.40	3.4%
MATINSPINN	38.3	38.8	38.1	15235	0.58	▼ -41%	0.14%	▲ 0%	50.73	39.42	3734	17.65	0.91	6.4%
METROSPIN	11.1	11.8	11.0	448981	5.13	▼ -29%	1.21%	▼ -5%	37.32	9.11	671	0.00	0.70	-4.0%
MHSML	15.0	16.0	14.7	152776	2.36	▼ -40%	0.56%	▼ -4%	42.96	28.59	1414	50.40	0.89	9.9%
MITHUNKNIT	23.1	24.6	23.0	34828	0.81	▼ -48%	0.19%	▼ -6%	29.75	73.83	751	0.00	1.05	0
MODERN DYE	210.0	239.9	210.0	746	0.16	▲ 315%	0.04%	▼ -8%	35.65	122.02	287	162.79	44.30	21.5%
NURANI	15.3	16.6	15.2	696532	11.08	▼ -57%	2.62%	▼ -7%	43.64	0.00	1397	9.34	1.32	11.7%
PDL	16.8	18.4	16.7	580533	10.11	▼ -54%	2.39%	▼ -8%	51.53	0.00	2136	11.00	1.10	13.8%
PTL	42.8	44.9	42.2	350125	15.24	▼ -66%	3.60%	▼ -5%	39.75	16.03	5523	22.36	2.24	9.4%
PRIMETEX	24.6	27.9	24.5	429628	11.49	▼ -34%	2.72%	▼ -9%	46.86	15.09	940	23.43	0.51	2.2%
QUEENSOUTH	50.4	50.4	39.4	1986525	88.95	▲ 16%	21.03%	▲ 16%	72.82	0.00	5048	43.83	3.45	0.0%
RAHIMTEXT	309.3	323.0	304.6	79319	24.77	▼ -29%	5.86%	▼ -1%	65.92	223.20	2418	40.02	8.66	17.5%
REGENTTEX	17.3	18.5	17.2	539018	9.66	▼ -50%	2.28%	▼ -5%	49.08	0.00	1998	14.79	0.57	4.0%
RNSPIN	12.3	13.1	12.2	294100	3.71	▼ -45%	0.88%	▼ -4%	32.42	21.44	3658	12.62	0.58	3.9%
SAFKOSPINN	16.4	17.5	16.4	346532	5.86	▼ -52%	1.39%	▼ -6%	44.26	17.04	477	33.36	0.94	2.1%
SAIHAMCOT	13.6	15.0	13.5	395058	5.66	▼ -48%	1.34%	▼ -8%	26.61	14.48	2023	14.95	0.60	4.7%
SAIHAMTEX	18.8	20.1	18.6	160628	3.08	▼ -41%	0.73%	▼ -5%	38.15	15.08	1703	18.99	0.70	3.8%
SHASHADNIM	55.2	58.6	55.1	129833	7.30	▼ -53%	1.73%	▼ -4%	43.03	36.73	6599	11.02	1.24	11.3%

Weekly Stock Market Report

Sectorwise Traded Script

Weekly Market Statistics										Market Technique						
Ticker	Close	High	Low	Avg Daily Volume	Avg Daily Turnover (BDTmn)	Δ III	% of Sector	Weekly Return	RSI****	EMA (10)****	Market Cap	Trailing P/E*	P/B**	ROE***		
Textile																
SIMTEX	27.9	28.3	27.5	122960	3.42	▼	-13%	0.80%	▲	0%	51.42	0.00	1839	12.31	1.29	10.8%
SONARGAOI	18.8	20.8	18.2	14941	0.29	▼	-56%	0.07%	▼	-5%	45.01	8.56	498	0.00	0.65	-3.6%
SQUARETEX	52.3	54.4	52.2	42715	2.29	▲	51%	0.54%	▼	-2%	37.71	73.22	9825	26.11	1.34	5.6%
TALLUSPIN	7.5	8.2	7.1	190701	1.43	▲	44%	0.34%	▼	-9%	25.91	19.36	670	0.00	0.57	-2.1%
TOSRIFA	18.0	19.6	17.6	85935	1.60	▼	-54%	0.38%	▼	-5%	28.96	18.00	1137	22.78	0.54	4.0%
TUNGHAI	7.2	8.3	7.1	183234	1.41	▲	52%	0.33%	▼	-13%	13.99	12.11	768	8.60	0.60	9.4%
ZAHEENSPIN	11.6	12.5	11.5	628049	7.57	▼	-5%	1.77%	▼	-6%	33.48	19.34	2286	10.04	1.90	10.4%
ZAHINTEX	13.0	13.8	13.0	117590	1.57	▼	-27%	0.37%	▼	-6%	31.14	20.41	1064	19.67	0.53	2.8%

Weekly Stock Market Report

Latest Corporate Declarations

Ticker	Declared Dividend	EPS	NAV	Cash Flow	Record Date
CONTININS	5%C 5%B	1.49	19.06	1.33	20.05.18
KARNAPHULI	6%C 5%B	1.51	20.06	2.00	20.05.18
SIBL	10%B	1.98	19.21	7.60	22.05.18

Right Offers

Ticker	Right Proposed	Record Date	Premium
SOUTHEASTB	1R:2	Proposed	Par
IPDC	1R:2	Proposed	3.00
RSRMSTEEL	2R:3	Proposed	15.00

Weekly Block Transactions

Instr Code	Max Price	Min Price	Trades	Quantity	Value(In mn)
ABBANK	12.90	12.90	1.00	1000000.00	12.90
APEXFOOT	300.00	300.00	1.00	30000.00	9.00
BRACBANK	76.00	76.00	2.00	150000.00	11.40
DSSL	21.00	21.00	1.00	500000.00	10.50
EBL	36.50	36.50	1.00	750000.00	27.38
EHL	47.00	47.00	1.00	500000.00	23.50
EXIMBANK	14.50	14.50	3.00	1850466.00	26.83
BSRMLTD	109.50	109.50	1.00	6600.00	0.72
GPHISPAT	40.30	40.30	1.00	750000.00	30.23
GREENDELTA	58.50	58.50	1.00	100000.00	5.85
JAMUNABANK	20.00	20.00	1.00	1000000.00	20.00
KEYACOSMET	10.20	10.20	2.00	105000.00	1.07
MJLBD	104.00	104.00	1.00	500000.00	52.00
OLYMPIC	250.00	250.00	1.00	100000.00	25.00
PADMAOIL	229.00	229.00	1.00	225000.00	51.53
QUEENSOUTH	47.00	46.50	6.00	106800.00	4.99
LINDEBD	1258.00	1258.00	1.00	1500.00	1.89
SINOBANGLA	53.00	53.00	1.00	15600.00	0.83
AIBL1STIMF	8.60	8.60	1.00	300000.00	2.58
AIL	100.00	99.80	4.00	500000.00	49.96
ACIFORMULA	180.00	178.80	2.00	400000.00	71.76
GP	464.00	452.60	5.00	167000.00	75.87
ISLAMIBANK	26.00	25.00	4.00	5544140.00	142.59
MPETROLEUM	186.00	185.00	2.00	400000.00	74.20
BATBC	3495.00	3400.00	7.00	31547.00	107.28
MARICO	1200.00	1200.00	2.00	13571.00	16.29
SQURPHARMA	303.00	300.00	2.00	250000.00	75.30
RENATA	1241.00	1241.00	2.00	350000.00	434.35