

Weekly Stock Market Report

Thursday, February 15, 2018

Broad Market Measurement

	15-Feb-18	8-Feb-18	% Change
Trailing P/E	17.50	17.29	▲ 1.22%
Annualized P/E	18.53	18.36	▲ 0.91%
Price/ NAV	2.31	2.29	▲ 1.04%
Dividend Yield	3.29%	3.30%	▼ -0.38%
Market RSI	46.57	38.28	▲ 21.7%

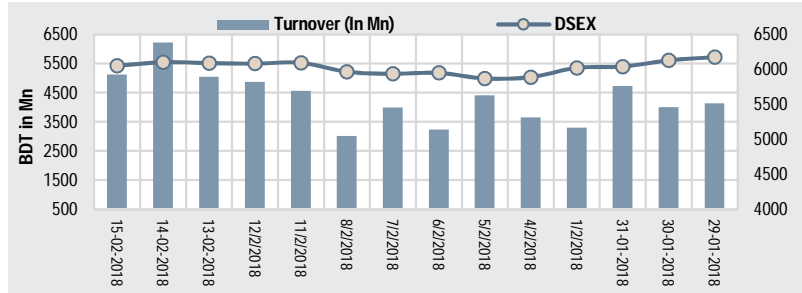
Economic Update

	8-Feb-18	1-Feb-18	% Change
Forex Reserve(mn \$)	32769.38	32693.68	▲ 0.2%
Call Money Rate	3.94	3.92	▲ 0.5%
Dollar Exchange Rate	82.90	82.90	▲ 0.0%
Euro Exchange	115.10	117.26	▼ -1.8%
Pound Exchange Rate	101.69	102.83	▼ -1.1%

Market Breadth

Losers	72.00
Unchanged	25.00
Gainers	241.00

DSE Weekly Overview



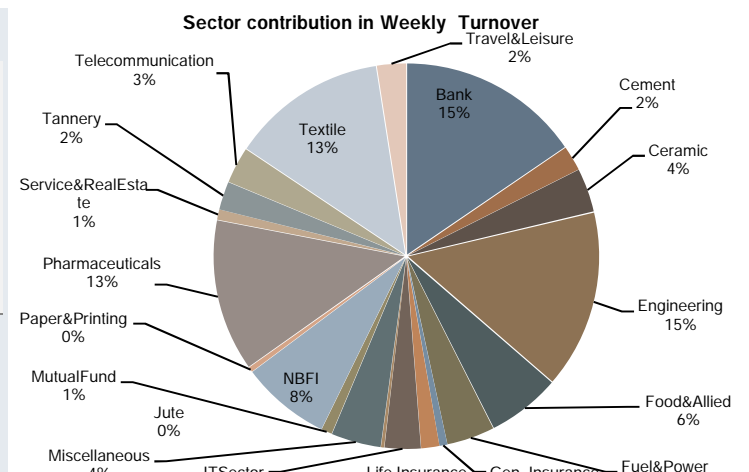
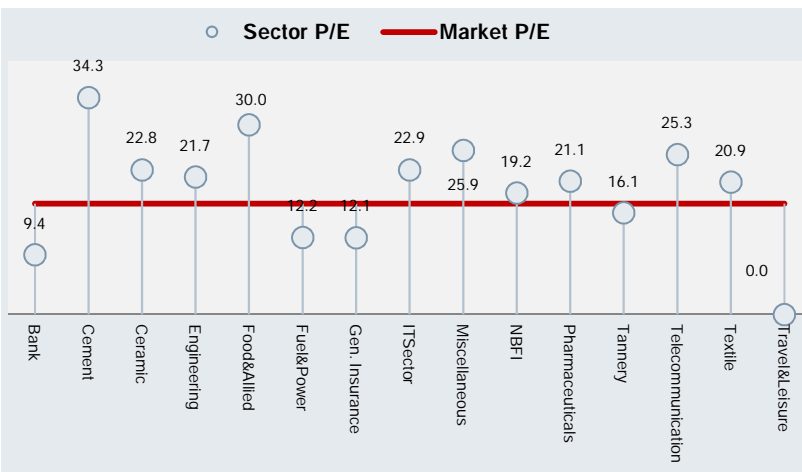
Index	Close	Open	% Change	Point Change
DSEX	6050.20	5965.63	▲ 1.4%	▲ 84.57
DS30	2230.93	2225.48	▲ 0.2%	▲ 5.44

Market Activities Summary

	This Week	Prev. Week	% Change
Avg. Daily Turnover (BDT mn)	5158.26	3653.91	▲ 41.2%
Avg. Daily Turnover (USD mn)	64.01	45.35	▲ 41.2%
Total No of Trade	603211	417244	▲ 44.6%
Avg. Trade Volume	144624035	95028109	▲ 52.2%

Weekly Sector Overview

	Listed Company	Trailing P/E	P/B	Average Daily Turnover BDT (mn)	% Δ in Turnover	Average Volume	% Change in volume	Sector Capitalization (BDT In Mn)	Weekly Return
Bank	30.0	9.4	1.24	758.40	8%	28315748	-1%	678885.53	1.84%
Cement	7.0	34.3	3.30	104.06	53%	999252	37%	121767.50	0.58%
Ceramic	5.0	22.8	2.12	181.54	54%	3523760	97%	29379.90	3.82%
Engineering	36.0	21.7	2.05	738.50	73%	12810619	64%	198634.02	2.73%
Food&Allied	18.0	30.0	17.71	303.21	131%	6912894	178%	294857.16	-1.64%
Fuel&Power	18.0	12.2	1.52	198.22	15%	3029921	16%	363413.42	-0.16%
Gen. Insurance	35.0	12.1	1.02	32.52	51%	1480773	44%	41142.72	-0.76%
Life Insurance	12.0	N/M*	0.00	75.18	28%	1338834	30%	48671.04	0.51%
ITSector	8.0	22.9	2.38	149.66	229%	4976196	266%	15836.98	5.95%
Jute	3.0	-36.9	4.34	12.95	66%	43566	71%	1897.44	-1.61%
Miscellaneous	12.0	25.9	1.15	207.56	40%	4712409	40%	96872.84	1.55%
MutualFund	36.0	N/M*	0.00	43.68	24%	5259187	31%	41968.20	0.81%
NBFI	23.0	19.2	2.30	369.49	-6%	10643372	-11%	230739.68	-0.46%
Paper&Printing	2.0	-15.6	1.30	20.72	287%	1292044	236%	2209.17	12.67%
Pharmaceuticals	28.0	21.1	3.30	630.14	11%	15830504	102%	559458.42	-0.26%
Service&RealEstate	4.0	27.7	2.10	41.69	27%	1059041	9%	16654.36	3.21%
Tannery	6.0	16.1	3.68	117.02	155%	2280874	150%	27487.49	2.93%
Telecommunication	2.0	25.3	17.64	151.71	41%	414668	56%	698180.79	1.00%
Textile	49.0	20.9	1.03	645.35	89%	32031647	118%	115647.95	4.51%
Travel&Leisure	4.0	-25.6	0.71	120.99	294%	3108625	103%	26577.14	9.35%



Weekly Observation

Index started to show signs of recovery and exceeded 6,000 level mark

After 2 weeks of consecutive fall, index finally increased this week with -84.57 points (1.42%) gain and closed at ~6,050.20 levels. Three out of five trading days of this week closed green. The week opened with a massive ~128.33 points (2.15%) gain, and then went through some ups and downs during the rest of the week. Market participation has increased with BDT 5.16 billion average turnover throughout the week (41.2% higher compared to turnover level of previous week). Among the large cap sectors, Textile, Ceramic, and Engineering registering the highest return with 4.51%, 3.82% and 2.73% respective gains. Bank sector also registered positive movement of 1.84% this week. Average Trade Volume increased by 52.2% whereas total number of trades increased by 44.6%.

Among the economic issues, Foreign aid is likely to be cut by BDT 5,000 crore in the current fiscal year's revised budget despite a significant increase in its utilization. Income tax collection marked a 12.6% growth in the first seven months of the current fiscal (FY18). The government is set to earn about \$593.33 million from spectrum auction and offering technological neutrality to the top three mobile operators, which is less than half of its target. Bangladesh on Tuesday signed a financing agreement with the International Fund for Agricultural Development (IFAD) to sustainably improve incomes and promote resilience to extreme weather conditions for 0.33 million rural households in six flood-prone districts in northern Bangladesh.

Top gaining stocks of the week were FINEFOODS (25.82%), APEXFOODS (24.64%) and INTECH (21.08%). Conversely, top losing stocks were IMAMBUTTON (-6.92%), EASTLAND (-6.84%) and PROGRESLIF (-6.19%). LANKABAFIN topped the weekly turnover list followed by GP, SQRPHARMA, BRACBANK, and MONNOCERA.

-Ahmed Irtiza

Weekly Top Performer

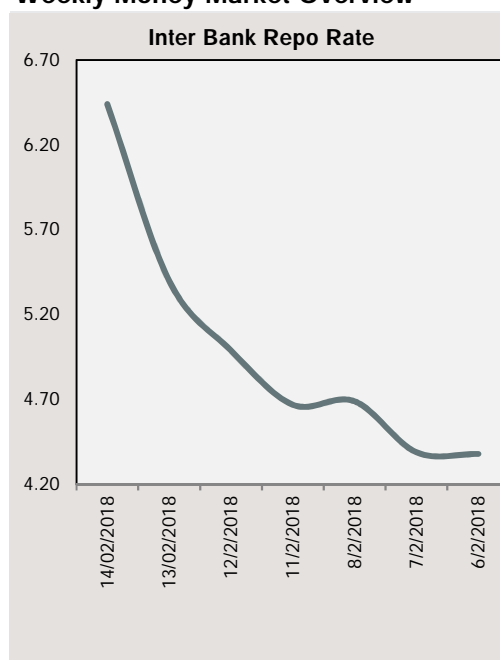
Turnover Leaders			
Company	Closing Price	% Δ	Avg. Daily Turnover (mn)
LANKABAFIN	38.80	-4.9%	192.86
GP	505.10	0.9%	136.10
SQRPHARMA	323.90	-0.9%	133.88
BRACBANK	97.20	5.5%	129.34
MONNOCERA	137.00	10.0%	124.28
UNIQUEHRL	62.90	10.7%	111.11
ANWARGALV	84.00	20.2%	104.26
PTL	47.30	2.8%	98.27
KEYACOSMET	10.80	0.9%	95.78
AIL	109.60	-3.4%	87.02

Top Gainers/Least Losers			
Company	Closing Price	% Δ	Avg. Daily Turnover (mn)
FINEFOODS	38.50	25.82%	36.30
2 APEXFOODS	174.00	24.64%	40.59
3 INTECH	20.10	21.08%	19.75
4 ANWARGALV	84.00	20.17%	104.26
5 AGNISYSL	23.50	19.90%	39.16
6 METROSPIN	13.30	19.82%	27.43
7 DACCADYE	10.90	19.78%	12.82
8 ALLTEX	13.60	18.26%	9.49
9 CENTRALPHL	17.70	17.22%	15.37
# KPPL	14.30	17.21%	16.89

Market Cap Leaders			
Company	Closing Price	% Δ	Avg. Daily Turnover (mn)
GP	505.10	0.9%	136.10
SQRPHARMA	323.90	0.9%	133.88
BATBC	3601.10	2.4%	10.68
ICB	147.60	1.2%	7.84
RENATA	1270.10	1.6%	8.85
BRACBANK	97.20	5.5%	129.34
LAFSURCEML	57.90	0.3%	31.46
UPGDCL	153.50	1.1%	22.53
OLYMPIC	268.10	1.5%	21.81
ISLAMIBANK	33.20	0.9%	27.74

Top Losers/Least Gainers			
Company	Closing Price	% Δ	Avg. Daily Turnover (mn)
# IMAMBUTTON	41.70	-6.92%	2.58
# EASTLAND	21.80	-6.84%	0.64
# PROGRESLIF	65.20	-6.19%	0.74
# NORTHERN	473.40	-5.51%	6.95
# ASIAINS	22.50	-5.46%	0.13
# MEGHNAPET	29.40	-5.16%	2.50
# GREENDELTA	59.40	-4.96%	0.83
# LANKABAFIN	38.80	-4.90%	192.86
# IDLC	75.50	-4.43%	39.00
# EASTRNLUB	1051.40	-4.38%	11.84

Weekly Money Market Overview



Source: Bangladesh Bank

Weekly Stock Market Report

Sectorwise Traded Scripts																
Ticker	Weekly Market Statistics									Market Technical and Fundamental Indicators						
	Close	High	Low	Avg Daily Volume	Avg Daily Turnover	Δ In Turnover	% Of Sector Turnover	Return	RSI****	EV/EA (10)*****	Market Cap	P/E*	P/B**	ROE***		
Bank																
Bank					(BDTmn)						BDT Mn					
ABBANK	18.8	20	17.9	1711193	32.35	▲	19%	4.27%	▲	4.4%	42.43	20.32	23755	29.16	0.98	6%
ALARABANK	24.1	25	24	955903	23.13	▲	93%	3.05%	▲	0.8%	51.32	14.30	23963	7.63	1.22	16%
BANKASIA	22.5	24	21.6	431623	9.85	▲	6%	1.30%	▲	3.2%	52.35	16.21	22208	9.32	1.17	9%
BRACBANK	97.2	100	93	1329620	129.34	▲	53%	17.05%	▲	5.5%	47.65	48.86	83126	17.86	3.73	18%
CITYBANK	43.1	45	42.9	1729883	76.09	▼	-16%	10.03%	▲	0.5%	38.36	20.06	37747	8.71	1.54	17%
DHAKABANK	18.6	19	19	1742111	33.14	▼	-11%	4.37%	▲	0.5%	31.31	19.02	13435	9.02	0.90	11%
DUTCHBANGL	145.1	156	143.4	165289	25.07	▼	-12%	3.31%	▼	-3.8%	51.28	102.91	29020	12.69	1.64	10%
EBL	43.5	46	43	363478	16.25	▼	-9%	2.14%	▲	1.4%	41.23	27.99	32103	10.53	1.54	13%
EXIMBANK	15.5	16	15.2	1416576	22.36	▼	-13%	2.95%	▲	2.0%	40.83	8.63	21890	6.33	0.83	12%
FIRSTSBANK	13.9	15	14	748553	10.57	▲	17%	1.39%	▲	1.5%	42.41	8.77	9908	8.66	0.92	14%
ICBIBANK	6.1	7	5.9	338498	2.11	▲	72%	0.28%	▲	1.7%	40.16	4.41	4055	0.00	-0.40	3%
IFIC	16.7	18	16	1371792	23.20	▲	65%	3.06%	▲	3.1%	46.13	20.99	10546	8.09	0.85	12%
ISLAMIBANK	33.2	34	32.9	827310	27.74	▼	-4%	3.66%	▲	0.9%	40.67	27.97	53452	14.56	1.09	9%
JAMUNABANK	20.8	21	20	295029	6.16	▲	65%	0.81%	▲	4.0%	51.68	11.80	12774	6.08	0.81	11%
MERCANBANK	24.3	26	23.2	3449632	85.60	▲	179%	11.29%	▲	4.3%	49.50	9.68	17962	5.84	1.07	14%
MTB	32.1	34	32	36721	1.21	▼	-85%	0.16%	▼	-3.0%	40.16	19.09	16360	16.68	1.67	16%
NBL	12.9	13	12.9	3410732	44.82	▼	-48%	5.91%	▼	-2.3%	48.00	9.30	30579	5.83	0.85	16%
NCCBANK	16.9	18	17	538203	9.20	▼	-17%	1.21%	▲	0.0%	45.86	9.04	14926	6.24	0.90	13%
ONEBANKLTD	22.6	23	21.4	879752	19.91	▲	62%	2.63%	▲	5.1%	53.87	14.59	16499	5.43	1.31	21%
PRIMEBANK	22.7	24	22	389190	9.07	▼	-42%	1.20%	▲	2.3%	39.00	18.96	23366	6.82	0.92	8%
PREMIERBAN	14.2	15	13.8	1135260	16.34	▲	34%	2.15%	▲	2.2%	42.70	8.19	9879	4.18	0.93	14%
PUBALIBANK	28.5	29	28	165741	4.76	▲	17%	0.63%	▲	1.1%	48.19	20.63	26345	14.38	1.07	6%
RUPALIBANK	57.6	61	57.0	388274	22.83	▲	66%	3.01%	▲	1.1%	46.12	39.81	16695	11.38	1.30	-10%
SHAHJABANK	31.0	32	30	573600	17.82	▼	-49%	2.35%	▲	0.0%	51.46	12.30	22775	12.70	1.75	13%
SIBL	22.7	24	22.3	224878	5.19	▼	-41%	0.68%	▲	1.8%	46.85	13.09	16759	7.42	1.18	17%
SOUTHEASTB	20.3	21	20	691937	14.23	▲	12%	1.88%	▲	1.0%	45.48	16.88	18614	7.38	0.70	9%
STANDBANKL	13.7	15	13.6	1284234	17.87	▲	248%	2.36%	▼	-2.1%	33.49	9.22	10848	9.54	0.86	9%
TRUSTBANK	41.9	43	40	329643	13.80	▼	-30%	1.82%	▲	4.5%	58.89	23.04	23337	10.75	2.03	19%
UTTARABANK	33.5	35	30.1	730656	24.06	▲	49%	3.17%	▲	11.3%	57.75	21.47	13403	8.66	1.00	12%
UCB	21.4	22	21	660435	14.33	▼	-22%	1.89%	▲	1.9%	45.30	20.70	22558	7.06	0.87	10%
Cement																
ARAMITCEM	30.6	31.7	29.6	21629	0.66	▼	-48%	0.64%	▲	4.8%	51.63	36.32	1037	0.00	2.74	-23%
CONFIDCEM	165.5	169.0	161.2	393367	65.20	▲	84%	62.66%	▲	3.1%	60.57	83.61	8936	18.74	2.69	16%
HEIDELCEM	401.4	410.0	400.0	9295	3.76	▼	-14%	3.61%	▼	-0.1%	40.89	588.06	22681	23.12	4.06	27%
LAFSURCEML	57.9	59.8	57.6	539913	31.46	▲	25%	30.23%	▲	0.3%	37.94	83.29	67244	49.91	4.37	15%
MEGHNACEM	97.9	101.0	97.8	10998	1.09	▲	28%	1.05%	▲	0.0%	42.70	99.16	2203	31.89	2.67	8%
MICEMENT	77.2	80.0	76.5	9222	0.72	▲	51%	0.69%	▲	0.0%	32.26	68.40	11464	25.99	1.62	10%
PREMIERCEM	77.8	82.5	76.5	14829	1.17	▲	148%	1.12%	▲	2.4%	37.05	78.83	8204	20.42	1.91	13%
Ceramic																
FUWANGCER	17.9	18.6	16.0	1849390	32.53	▲	363%	17.92%	▲	12.6%	67.44	11.58	2217	26.12	1.99	7%
MONNOCERA	137.0	139.4	120.3	974038	124.28	▲	37%	68.46%	▲	10.0%	75.85	34.72	3442	80.61	1.51	0%
RAKCERAMIC	56.4	56.9	55.1	246698	14.19	▲	13%	7.82%	▲	2.5%	42.25	66.80	19948	18.64	3.40	16%
SPCERAMICS	20.8	22.2	20.7	444761	9.54	▲	28%	5.26%	▲	0.5%	54.32	11.36	3057	40.00	0.68	0%
STANCERAM	110.7	116.4	109.1	8873	0.99	▲	94%	0.55%	▲	1.5%	52.59	49.46	715	60.88	6.59	-2%
Engineering																
AFTABAUTO	61.1	61.6	59.6	37772	2.30	▲	2%	0.31%	▲	1.7%	47.78	53.61	5849	13.95	1.03	7%
ANWARGALV	84.0	87.4	70.7	1313103	104.26	▲	1107%	14.12%	▲	20.2%	67.76	67.61	1220	62.81	10.36	13%
APOLOSPAT	14.9	15.4	14.1	1069951	15.89	▲	53%	2.15%	▲	6.4%	46.35	0.00	5805	163.90	0.74	6%
ATLASBANG	139.1	145.0	132.9	152554	21.36	▲	499%	2.89%	▲	5.4%	61.85	146.89	4189	1500.10	0.93	-2%
AZIZPIPES	145.6	156.9	144.0	55624	8.32	▲	53%	1.13%	▲	1.8%	45.42	41.38	741	236.18	-2.85	-1%
BBSCABLES	92.8	97.8	92.6	645012	61.53	▼	-6%	8.33%	▲	0.0%	0.00	0.00	12806	13.05	5.57	25%
BDAUTOCA	123.8	130.0	118.9	160196	19.97	▲	140%	2.70%	▲	5.3%	57.30	36.48	478	100.85	44.69	40%
BBS	34.4	34.8	32.0	393928	13.30	▲	32%	1.80%	▲	7.8%	44.77	36.44	4853	15.02	2.61	20%
BDLAMP	186.0	198.0	178.0	44515	8.51	▲	395%	1.15%	▲	3.7%	55.31	200.17	1743	39.32	1.98	5%
BDTHAI	28.4	29.3	27.8	1452151	41.38	▲	58%	5.60%	▲	2.9%	45.23	31.68	3121	0.00	0.98	-2%
BENGALWTL	36.4	37.2	34.2	84349	3.03	▼	-6%	0.41%	▲	5.8%	47.46	52.33	3330	25.58	1.52	7%
BSRMLTD	95.2	97.4	93.9	74076	7.08	▲	22%	0.96%	▲	1.3%	38.60	128.42	20431	28.75	1.88	7%

Weekly Stock Market Report

Sectorwise Traded Script															
Weekly Market Statistics										Market Technique					
Ticker	Close	High	Low	Avg Daily Volume	Avg Daily Turnover (BDTmn)	Δ in Turnover	% of Sector	weekly Return	RSI****	EMA (10)****	Market Cap	Trailing P/E*	P/B**	ROE***	
Textile															
SONARGAOI	29.1	30.3	28.4	577479	16.98	▼ -4%	3.08%	▲ 3%	40.67	71.78	3384	20.94	0	0	
SQUARETEX	81.2	83.8	79.3	99689	8.16	▲ 131%	1.48%	▲ 5%	53.90	76.70	1460	40.14	1.88	8.0%	
TALLUSPIN	11.5	12.4	10.6	699027	8.18	▲ 892%	1.48%	▲ 10%	60.93	19.36	1027	0.00	0.88	-2.1%	
TOSRIFA	22.8	23.1	21.9	207085	4.68	▲ 316%	0.85%	▲ 5%	45.71	18.00	1440	20.18	0.68	4.0%	
TUNGHAI	10.6	11.1	9.1	687961	6.99	▲ 308%	1.27%	▲ 15%	64.02	12.11	1131	12.66	0.88	9.4%	
ZAHEENSPIN	19.6	20.2	19.3	753418	14.89	▲ 54%	2.70%	▲ 1%	37.89	19.34	1932	15.51	1.60	10.4%	
ZAHINTEX	15.9	16.3	15.0	167345	2.63	▲ 21%	0.48%	▲ 7%	52.23	20.41	1301	22.06	0.65	2.8%	

Weekly Stock Market Report

Latest Corporate Declarations

Ticker	Declared Dividend	EPS	NAV	Cash Flow	Record Date
GP	105%	20.31	26.01	42.79	19.02.18
IDLC	30%	6.13	33.41	19.76	08.03.18

Right Offers

Ticker	Right Proposal	Record Date	Premium
SOUTHEASTB	1R:2	Proposed	Par
ZAHEENSPIN	1R:1	Proposed	Par
RSRMSTEEL	2R:3	Proposed	15.00
IPDC	1R:2	Proposed	3.00

Weekly Block Transactions

Instr Code	Max Price	Min Price	Trades	Quantity	Value(In mn)
AIL	110.00	110.00	1.00	20000.00	2.20
MEGHNACEM	104.10	104.10	1.00	33886.00	3.53
PHARMAID	455.00	455.00	1.00	10000.00	4.55
USMANIAGL	117.00	117.00	1.00	170000.00	19.89
UTTARABANK	29.00	29.00	3.00	1000000.00	29.00
CITYBANK	43.90	43.90	1.00	64384.00	2.83
ALARABANK	25.00	25.00	4.00	17200000.00	430.00
GREENDELMF	9.50	9.50	2.00	200000.00	1.90
DBH1STMF	9.70	9.70	2.00	300000.00	2.91
FASFIN	19.60	19.60	1.00	512500.00	10.05
BRACBANK	99.00	94.70	8.00	1624055.00	157.88
GP	509.30	505.00	11.00	656000.00	332.65
SQURPHARMA	328.00	325.50	7.00	735000.00	240.19
BATBC	3700.00	3646.00	4.00	2500.00	9.14
BXPHARMA	112.00	110.00	2.00	253532.00	28.20
ZAHEENSPIN	20.20	20.00	6.00	260000.00	5.23