

# Weekly Stock Market Report

Thursday, April 12, 2018

## Broad Market Measurement

	12-Apr-18	5-Apr-18	% Change
Trailing P/E	17.02	16.85	▲ 1.02%
Annualized P/E	17.63	17.68	▼ -0.27%
Price/ NAV	2.23	2.23	▼ -0.16%
Dividend Yield	3.39%	3.43%	▼ -1.11%
Market RSI	53.36	57.52	▼ -7.2%

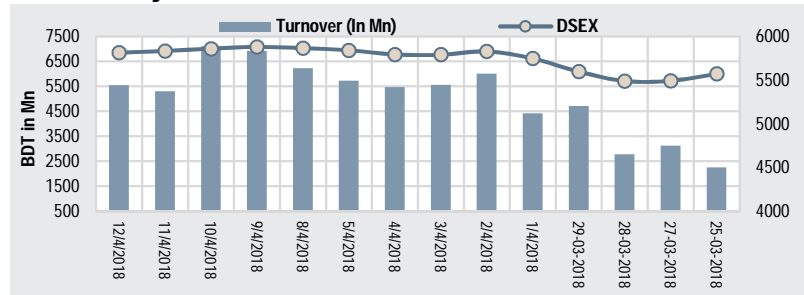
## Economic Update

	4-Apr-18	22-Mar-18	% Change
Forex Reserve(mn \$)	32668.26	32208.76	▲ 1.4%
Call Money Rate	4.55	4.51	▲ 0.9%
Dollar Exchange Rate	82.96	82.96	▲ 0.0%
Euro Exchange	116.65	117.34	▼ -0.6%
Pound Exchange Rate	101.81	102.34	▼ -0.5%

## Market Breadth

Losers	185.00
Unchanged	26.00
Gainers	130.00

## DSE Weekly Overview



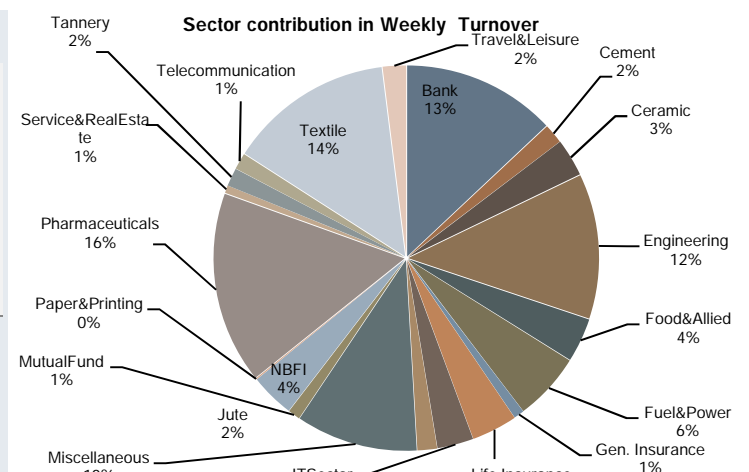
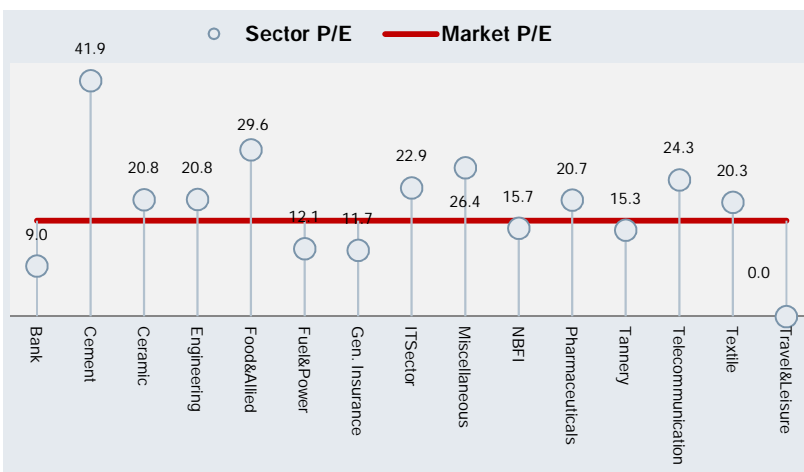
Index	Close	Open	% Change	Point Change
DSEX	5813.14	5841.19	▼ -0.5%	-28.05
DS30	2186.79	2194.54	▼ -0.4%	-7.74

## Market Activities Summary

	This Week	Prev. Week	% Change
Avg. Daily Turnover (BDT mn)	6214.33	5429.26	▲ 14.5%
Avg. Daily Turnover (USD mn)	77.12	67.38	▲ 14.5%
Total No of Trade	663945	580615	▲ 14.4%
Avg. Trade Volume	188612211	163691252	▲ 15.2%

## Weekly Sector Overview

Listed Company	Trailing P/E	P/B	Average Daily Turnover BDT (mn)	% Δ in Turnover	Average Volume	% Change in volume	Sector Capitalization (BDT In Mn)	Weekly Return	
Bank	30.0	9.0	1.13	817.21	-25%	27611850	-36%	622517.92	-2.01%
Cement	7.0	41.9	3.42	104.13	15%	1475724	18%	126061.50	1.41%
Ceramic	5.0	20.8	1.85	200.33	61%	2745038	56%	25636.61	-0.49%
Engineering	36.0	20.8	1.97	771.66	7%	16144186	8%	191350.42	-1.93%
Food&Allied	18.0	29.6	16.82	235.08	5%	5941301	23%	279940.45	-1.50%
Fuel&Power	18.0	12.1	1.51	361.25	55%	4984020	67%	361379.11	0.90%
Gen. Insurance	35.0	11.7	0.98	54.08	68%	2753837	73%	39772.06	0.68%
Life Insurance	12.0	N/M*	0.00	243.03	76%	3718633	62%	55957.73	6.79%
ITSector	8.0	22.9	2.38	192.63	-24%	4716716	-26%	15841.67	-1.83%
Jute	3.0	-37.4	4.42	104.20	715%	272000	575%	1931.96	7.27%
Miscellaneous	12.0	26.4	1.17	646.58	81%	20137488	74%	98029.73	0.61%
MutualFund	37.0	N/M*	0.00	65.19	-38%	8273634	-32%	42786.25	0.12%
NBFI	23.0	15.7	2.15	235.85	-28%	8508159	-27%	214962.09	-2.55%
Paper&Printing	2.0	-14.1	1.18	5.21	75%	145105	-27%	2004.07	5.75%
Pharmaceuticals	29.0	20.7	3.22	1019.45	91%	30474253	181%	546566.31	-0.64%
Service&RealEstate	4.0	26.8	2.03	40.85	40%	1211558	34%	16115.55	1.60%
Tannery	6.0	15.3	3.51	96.68	11%	2497109	14%	26258.80	-0.92%
Telecommunication	2.0	24.3	16.97	87.52	37%	216891	25%	671598.51	1.71%
Textile	50.0	20.3	1.00	875.42	51%	46747708	53%	113608.83	0.63%
Travel&Leisure	4.0	-23.9	0.66	125.18	-6%	3261809	7%	24831.79	-4.30%



## Weekly Observation

### Index closed red after two weeks of upward streak

The benchmark DSEX index lost ~28.05 points, a 0.5% decrease over the last trading week. This week had five trading days with first two days closing green and then consecutive fall for three days. Index rose ~38.22 in the first two trading days and lost ~19.81, ~26.34 & ~20.13 points in respectively in the last three days. The week closed at ~5813.14 levels. Market participation has increased by 14.5%. Financial sectors has shown negative movements after weeks of gain. Among other major sectors, only Fuel & Power and Pharmaceuticals posted positive movement (0.90% and 1.71% respectively). Average Trade Volume increased by 15.2% and total number of trades increased by 14.4%.

Among the economic issues, the central bank has asked banks to submit their action plans in order to bring down ADR limit at the required level. Economic growth of Bangladesh for current fiscal year has been projected at 7.65% though international authorities like World Bank(WB) and Asian Development Bank remains doubtful that the actual growth maybe around 6.5%. The government is set to import 500 megawatt more electricity on a short- and long-term basis from India to meet the growing demand for power in the country whereas WB has committed to provide USD 515mn for two projects including an electricity transmission network expansion project. The NBR logged in Tk 126,357 crore as revenue in July-February, up 16 percent year-on-year. Also NBR is on the process to simplify the taxation of dividend income so that it is taxed only once.

Top gaining stocks of the week were MONNOSTAF (+32.04%), POPULARLIF (+30.34%), and SONALIANS (+18.76%). Conversely, top losing stocks were ISLAMICFIN (-11.44%), RUPALIBANK (-8.80%), and DULAMIACOT (-8.84%). BEXIMCO topped the weekly turnover list followed by ADVENT, BRACBANK, MONNOCERA, KEYACOSMET and ALIF.

*-Mashqurur Rahman*

## Weekly Top Performer

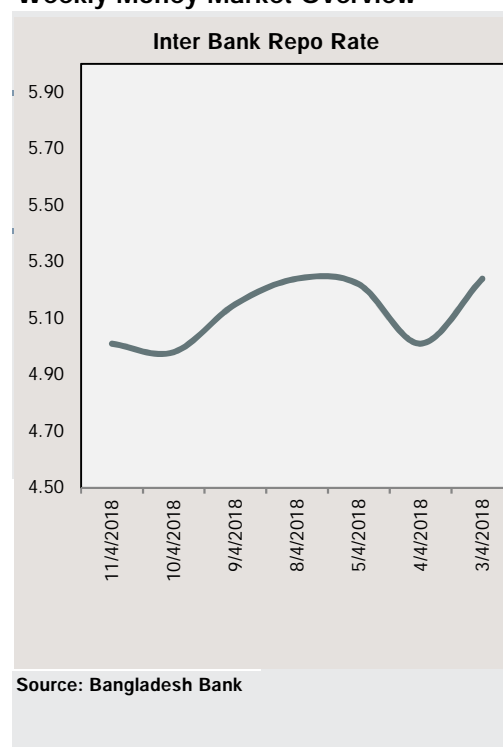
Turnover Leaders			
Company	Closing Price	% Δ	Avg. Daily Turnover (mn)
BEXIMCO	30.60	6.6%	460.39
ADVENT	48.40	0.0%	338.99
BRACBANK	87.00	5.1%	285.86
MONNOCERA	142.10	-4.2%	163.70
KEYACOSMET	10.60	8.2%	162.78
ALIF	12.80	5.8%	134.99
IFADAUTOS	118.30	-3.8%	133.39
MERCANBANK	23.10	0.4%	103.43
UNIQUEHRL	58.30	-5.8%	99.12
NORTHERN	445.00	1.3%	93.52

Top Gainers/Least Losers			
Company	Closing Price	% Δ	Avg. Daily Turnover (mn)
MONNOSTAF	1475.30	32.04%	38.10
2 POPULARLIF	129.30	30.34%	62.71
3 SONALIANS	257.60	18.76%	10.21
4 RENWICKJA	779.00	14.26%	16.93
5 MERCINS	23.80	11.74%	15.20
6 KAY&QUE	161.10	11.18%	1.91
7 EASTRNLUB	1152.90	9.63%	24.44
8 CENTRALINS	22.80	9.62%	0.13
9 FAREASTLIF	84.10	9.36%	21.01
# AFCAGRO	40.10	8.97%	28.43

Market Cap Leaders			
Company	Closing Price	% Δ	Avg. Daily Turnover (mn)
GP	486.00	1.9%	83.31
SOURPHARMA	313.90	0.4%	87.37
BATBC	3350.90	1.8%	4.33
ICB	141.30	2.3%	20.97
BRACBANK	87.00	5.1%	285.86
RENATA	1239.20	0.8%	2.17
LHBL	62.20	3.5%	79.15
UPGDCL	166.80	1.0%	69.31
OLYMPIC	273.20	0.5%	4.93
BERGERPBL	2096.60	1.3%	0.21

Top Losers/Least Gainers			
Company	Closing Price	% Δ	Avg. Daily Turnover (mn)
# ISLAMICFIN	17.80	-11.44%	7.30
# RUPALIBANK	48.70	-8.80%	10.84
# DULAMIACOT	41.20	-8.44%	0.21
# CITYBANK	39.50	-7.71%	41.00
# FIRSTFIN	9.40	-6.93%	0.48
# PRAGATIINS	25.10	-6.69%	2.81
# UCB	17.30	-6.49%	21.96
# UTTARAFIN	64.20	-6.41%	6.24
# DHAKABANK	16.40	-6.29%	18.19
# RECKITT BEN	1800.10	-6.21%	2.34

## Weekly Money Market Overview



# Weekly Stock Market Report

## Sectorwise Traded Scripts

Ticker	Weekly Market Statistics								Market Technical and Fundamental Indicators						
	Close	High	Low	Avg Daily Volume	Avg Daily Turnover	Δ in Turnover	% of Sector Turnover	Return	RSI****	EMA (10)*****	Market Cap	P/E*	P/B**	ROE***	
<b>Bank</b>															
ABBANK	16.2	17	16.1	1285765	21.16	▼ -32%	2.59%	▼ -2.4%	42.15	20.32	20470	25.13	0.84	6%	
ALARABANK	23.9	24	23	1572520	37.53	▲ 307%	4.59%	▲ 0.0%	52.15	14.30	23764	7.59	1.21	17%	
BANKASIA	18.7	20	18.3	106829	2.04	▼ -60%	0.25%	▼ -3.1%	33.96	16.21	18457	8.74	0.97	11%	
BRACBANK	87.0	107	84	2917816	285.86	▲ 19%	<b>34.98%</b>	▲ 5.1%	78.84	48.86	93004	17.92	4.18	24%	
CITYBANK	39.5	44	39.3	984757	41.00	▼ -58%	5.02%	▼ -7.7%	44.88	20.06	34594	7.98	1.41	17%	
DHAKABANK	16.4	18	16	1063353	18.19	▼ -55%	2.23%	▼ -6.3%	40.41	19.02	11846	7.95	0.79	11%	
DUTCHBANGL	113.0	118	112.3	143155	16.45	▲ 17%	2.01%	▼ -1.3%	41.87	102.91	22600	9.20	1.28	14%	
EBL	40.4	44	40	274390	11.66	▼ -43%	1.43%	▼ -3.1%	47.72	27.99	29815	9.78	1.43	13%	
EXIMBANK	13.6	14	13.5	1423949	19.75	▼ -43%	2.42%	▼ -3.5%	42.24	8.63	19207	5.55	0.73	12%	
FIRSTSBANK	12.4	13	12	628461	7.93	▼ -60%	0.97%	▼ -3.9%	43.89	8.77	8839	7.72	0.82	14%	
ICBIBANK	5.1	5	5.1	223234	1.16	▼ -9%	0.14%	▼ -3.8%	35.47	4.41	3390	0.00	-0.34	4%	
IFIC	15.2	16	15	1277882	20.04	▼ -48%	2.45%	▼ -5.6%	45.61	20.99	9599	6.50	0.78	11%	
ISLAMIBANK	27.7	29	27.5	1021354	28.78	▼ -63%	3.52%	▼ -3.5%	37.87	27.97	44597	12.15	0.91	9%	
JAMUNABANK	20.2	21	20	407211	8.46	▼ -38%	1.04%	▼ -2.9%	54.41	11.80	12405	5.91	0.79	11%	
MERCANBANK	23.1	24	22.5	4506382	103.43	▲ 4%	<b>12.66%</b>	▲ 0.4%	56.47	9.68	17075	5.94	1.02	18%	
MTB	31.1	32	31	182479	5.82	▼ -55%	0.71%	▼ -2.8%	46.67	19.09	15850	16.16	1.61	16%	
NBL	11.7	12	11.6	1707714	20.22	▼ -61%	2.47%	▼ -1.7%	47.57	9.30	27734	5.29	0.77	16%	
NCCBANK	15.8	17	16	360274	5.88	▼ -46%	0.72%	▼ -4.8%	44.47	9.04	13955	5.83	0.84	13%	
ONEBANKLTD	20.2	21	20.1	739709	15.38	▼ -28%	1.88%	▼ -2.9%	46.39	14.59	14747	4.86	1.17	21%	
PRIMEBANK	20.0	21	19	876049	17.86	▲ 92%	2.19%	▼ -2.0%	43.34	18.96	20587	16.95	0.81	5%	
PREMIERBAN	13.7	15	13.4	1273766	17.69	▼ -67%	2.16%	▼ -4.2%	54.24	8.19	9531	4.84	0.89	17%	
PUBALIBANK	24.5	25	24	214158	5.29	▼ -14%	0.65%	▼ -0.4%	41.52	20.63	22648	12.96	0.92	7%	
RUPALIBANK	48.7	54	48.2	210192	10.84	▼ -60%	1.33%	▼ -8.8%	40.93	39.81	14115	9.62	1.10	-10%	
SHAHJABANK	28.7	30	27	397179	11.34	▲ 6%	1.39%	▲ 1.8%	51.18	12.30	21086	11.76	1.62	13%	
SIBL	19.4	20	19.4	639666	12.69	▼ -73%	1.55%	▼ -3.0%	34.63	13.09	14323	6.34	1.01	17%	
SOUTHEASTB	18.3	19	18	349124	6.46	▼ -49%	0.79%	▼ -1.6%	42.04	16.88	16780	6.65	0.63	9%	
STANDBANKL	12.7	13	12.6	496983	6.37	▼ -53%	0.78%	▲ 0.0%	46.52	9.22	10056	8.14	0.80	10%	
TRUSTBANK	39.8	42	40	310713	12.80	▼ -52%	1.57%	▼ -5.2%	44.55	23.04	22167	10.21	1.92	19%	
UTTARABANK	27.6	29	27.3	829246	23.18	▼ -25%	2.84%	▼ -3.2%	46.09	21.47	11042	7.21	0.82	12%	
UCB	17.3	19	17	1187537	21.96	▲ 37%	2.69%	▼ -6.5%	39.73	20.70	18236	6.71	0.71	11%	

## Cement

ARAMITCEM	26.3	28.0	26.0	32032	0.85	▼ -33%	0.82%	▼ -1.5%	41.83	36.32	891	0.00	2.36	-23%
CONFIDCEM	157.0	162.5	156.5	118590	19.00	▼ -8%	<b>18.25%</b>	▼ -2.7%	37.52	83.61	8477	17.78	2.55	16%
HEIDELBCEM	389.0	400.0	386.0	8430	3.32	▼ -13%	3.19%	▼ -2.0%	50.91	588.06	21980	22.41	3.93	27%
LHBL	62.2	62.6	59.9	1295514	79.15	▲ 28%	<b>76.01%</b>	▲ 3.5%	69.72	83.29	72237	90.14	4.70	5%
MEGHNACEM	92.6	94.5	91.0	7371	0.69	▼ -58%	0.66%	▼ -0.1%	46.37	99.16	2084	30.16	2.52	8%
MICEMENT	78.6	79.9	78.0	7703	0.61	▲ 13%	0.59%	▲ 0.0%	51.66	68.40	11672	26.46	1.64	10%
PREMIERCEM	82.7	87.0	82.5	6085	0.51	▲ 17%	0.49%	▲ 0.1%	46.79	78.83	8721	21.71	2.03	13%

## Ceramic

FUWANGCER	16.6	17.5	16.5	1315326	22.43	▲ 62%	<b>11.20%</b>	▲ 0.0%	50.21	11.58	2056	24.23	1.84	7%
MONNOCERA	142.1	162.1	141.0	1063195	163.70	▲ 59%	<b>81.72%</b>	▼ -4.2%	50.46	34.72	3570	83.61	1.57	0%
RAKCERAMIC	47.0	48.8	46.8	239224	11.37	▲ 100%	5.68%	▼ -0.2%	50.93	66.80	16624	16.32	2.84	18%
SPCERAMICS	18.0	19.1	17.7	122371	2.27	▲ 53%	1.13%	▲ 2.3%	48.79	11.36	2645	34.62	0.59	0%
STANCERAM	114.7	117.0	110.7	4922	0.56	▼ -6%	0.28%	▲ 0.9%	53.70	49.46	741	63.08	6.83	-2%

## Engineering

AFTABAUTO	58.7	60.7	58.2	81027	4.83	▲ 55%	0.63%	▼ -0.3%	47.54	53.61	5619	13.40	0.99	7%
ANWARGALV	74.1	78.2	72.9	324140	24.61	▼ -18%	3.19%	▼ -4.4%	44.97	67.61	1076	55.41	9.14	13%
APOLOSPAT	14.9	15.8	14.4	1704294	25.97	▲ 1%	3.37%	▲ 0.0%	55.45	0.00	5805	163.90	0.74	6%
ATLASBANG	131.2	136.1	129.0	18221	2.39	▲ 10%	0.31%	▼ -2.2%	47.32	146.89	3951	1414.90	0.88	-2%
AZIZPIPES	133.1	145.0	130.5	39470	5.44	▼ -3%	0.71%	▼ -3.8%	47.12	41.38	678	215.90	-2.60	-1%
BBSCABLES	79.3	87.5	78.6	712563	59.95	▼ -27%	7.77%	▼ -5.5%	0.00	0.00	10943	11.15	4.76	25%
BDAUTOCA	116.3	121.4	115.1	61267	7.22	▼ -29%	0.94%	▼ -2.4%	47.01	36.48	449	94.74	41.98	40%
BBS	32.6	34.5	32.5	425806	14.31	▲ 43%	1.85%	▼ -0.9%	48.24	36.44	4599	14.23	2.47	20%
BDLAMPS	180.3	192.7	178.0	43762	8.01	▼ -26%	1.04%	▼ -4.4%	46.12	200.17	1690	38.12	1.92	5%
BDTHAI	25.6	27.4	25.4	2504795	66.26	▲ 9%	8.59%	▼ -0.8%	49.49	31.68	2814	0.00	0.88	-2%
BENGALWTL	34.0	36.3	34.0	114617	4.03	▲ 21%	0.52%	▼ -1.2%	50.00	52.33	3110	23.90	1.42	7%
BSRMLTD	99.1	106.0	98.6	337393	34.69	▲ 65%	4.50%	▼ -3.5%	56.97	128.42	21268	29.92	1.96	7%

# Weekly Stock Market Report

## Sectorwise Traded Script

Ticker	Weekly Market Statistics									Market Technical and Fundamental Indicators					
	Close	High	Low	Avg Daily Volume	Avg Daily Turnover (BDTmn)	Δ in	Turnover	% of Sector Turnover	weekly Return	RSI****	EWMA (10)****	Market Cap BDT Mn	P/E*	P/B**	ROE***
<b>Engineering</b>															
BSRMSTEEL	76.4	78.0	75.4	96550	7.40	▲	10%	0.96%	▲ 1.3%	68	90.58	26112	18.19	2.27	19.1%
DESHBANDHU	19.1	20.9	19.0	1673808	33.43	▲	54%	4.33%	▼ -3.0%	50	11.73	1066	47.75	1.70	3.4%
ECABLES	198.5	211.9	193.2	58274	11.74	▲	3%	1.52%	▼ -4.2%	46	132.18	4764	165.42	6.48	3.9%
GOLDENSON	12.4	12.5	11.8	100358	1.22	▲	118%	0.16%	▲ 5.1%	54	25.97	2129	0.00	0.54	-5.3%
GPHISPAT	37.4	39.2	37.3	147484	5.65	▼	-24%	0.73%	▼ -3.4%	51	38.06	12246	20.20	2.43	11.6%
IFADAUTOS	118.3	126.5	118.1	1080477	133.39	▼	-2%	<b>17.29%</b>	▼ -3.8%	43	105.79	27038	13.10	4.50	26.7%
KAY&QUE	161.1	164.8	144.0	12332	1.91	▲	49%	0.25%	▲ 11.2%	65	17.88	790	100.06	-14.02	-1.0%
KDSALTD	60.2	63.3	58.4	127003	7.78	▲	78%	1.01%	▲ 3.3%	58	76.60	3443	27.00	2.43	9.2%
MONNOSTAF	1475.3	1475.3	1187.1	28473	38.10	▲	152%	4.94%	▲ 32.0%	90	260.44	679	865.83	32.47	1.1%
NAHEEACP	49.2	53.9	49.0	933501	48.11	▲	16%	<b>6.23%</b>	▼ -0.4%	44	260.44	2362	12.03	4.66	26.5%
NAVANACNG	61.0	64.2	60.2	101370	6.33	▲	36%	0.82%	▼ -0.2%	52	45.40	4180	21.18	1.81	9.3%
NPOLYMAR	78.1	80.8	77.9	35991	2.87	▼	-28%	0.37%	▼ -2.3%	45	90.10	1915	33.57	1.86	6.6%
NTLTUBES	117.7	127.6	117.1	234518	28.59	▼	-17%	3.71%	▼ -5.5%	38	90.07	3387	0.00	0.59	-1.3%
OAL	16.7	18.0	16.6	1786424	30.97	▲	6%	4.01%	▲ 0.0%	50	32.35	2574	15.17	1.14	8.2%
OIMEX	43.9	47.3	42.2	484857	21.81	▲	41%	2.83%	▲ 1.2%	50	32.35	2216	15.51	4.23	19.5%
QUASEMIND	69.1	73.8	68.8	142517	10.18	▼	-10%	1.32%	▼ -4.8%	43	97.12	3631	40.94	1.82	4.9%
RANFOUNDRY	137.1	139.8	132.6	48602	6.57	▲	51%	0.85%	▲ 1.0%	57	100.77	1371	33.60	5.78	17.5%
RENWICKJA	779.0	789.9	632.2	23591	16.93	▲	127%	2.19%	▲ 14.3%	78	247.64	1558	159.96	-21.83	-12.5%
RSRMSTEEL	53.7	56.9	53.3	452185	24.80	▼	-1%	3.21%	▼ -0.7%	52	48.13	5434	6.51	1.41	20.0%
SALAMCRST	31.4	33.0	31.3	142576	4.59	▲	27%	0.60%	▼ -1.6%	48	27.72	3089	27.07	1.61	5.7%
SHURWID	19.1	19.7	17.9	518224	9.75	▲	21%	1.26%	▲ 6.7%	62	0.00	996	0.00	1.58	-4.7%
SINGERBD	175.1	186.5	175.0	153746	27.43	▼	-28%	3.55%	▼ -5.7%	53	153.16	13429	17.89	6.90	44.6%
WMSHIPYARD	24.6	26.4	24.4	1191328	30.41	▲	43%	3.94%	▲ 0.4%	47	32.77	3652	48.80	0.72	6.5%
YPL	18.9	20.3	18.8	202642	3.98	▲	50%	0.52%	▼ -1.0%	46	0.00	1288	126.00	2.11	6.4%
<b>Financial Institution</b>															
BAYLEASING	25.7	27.0	25.1	133998	3.42	▲	117%	1.45%	▲ 5.8%	55	18.80	3364	20.73	1.27	6.0%
BDFINANCE	20.0	21.8	19.8	937816	19.67	▲	68%	<b>8.34%</b>	▼ -0.5%	42	10.31	2769	9.69	1.38	8.8%
BIFC	9.4	10.0	9.3	9596	0.09	▼	-32%	0.04%	▼ -2.1%	46	8.10	946	0.00	2.98	-87.9%
DBH	136.0	141.8	133.5	14637	2.00	▼	-70%	0.85%	▼ -3.1%	59	106.19	16572	17.46	4.59	29.7%
FAREASTFIN	9.1	9.4	9.0	197344	1.81	▼	-5%	0.77%	▼ -1.1%	44	9.48	1493	0.00	0.72	4.9%
FASFIN	14.9	16.2	14.7	1129362	17.45	▼	-30%	<b>7.40%</b>	▼ -5.7%	41	10.54	1923	13.55	1.19	9.0%
FIRSTFIN	9.4	10.3	9.2	49345	0.48	▲	256%	0.20%	▼ -6.9%	36	11.10	1147	20.54	0.78	3.3%
GSPFINANCE	19.6	20.5	19.6	232895	4.69	▼	-33%	1.99%	▼ -2.5%	45	14.28	2533	6.76	0.99	14.0%
ICB	141.3	154.9	140.5	142986	20.97	▼	-26%	<b>8.89%</b>	▼ -2.3%	54	113.22	93887	17.33	2.50	12.3%
IDLC	71.8	74.0	70.1	348050	25.37	▼	-4%	<b>10.76%</b>	▼ -1.2%	51	62.23	27072	11.71	3.03	27.6%
ILFSL	18.4	19.7	18.2	859369	16.40	▼	-33%	<b>6.95%</b>	▼ -4.7%	52	9.23	3305	12.94	1.42	5.4%
IPDC	35.0	37.4	34.8	164314	5.95	▼	-9%	2.52%	▼ -2.2%	40	29.21	7636	22.70	2.75	12.8%
ISLAMICFIN	17.8	19.1	17.5	395012	7.30	▼	-54%	3.09%	▼ -11.4%	53	15.37	2153	9.83	1.26	13.2%
LANKABAFIN	31.0	33.6	30.9	2272141	73.54	▼	-45%	<b>31.18%</b>	▼ -4.0%	44	29.23	15909	5.58	2.38	44.0%
MIDASFIN	37.0	40.8	36.8	70247	2.73	▲	130%	1.16%	▼ -0.5%	48	14.90	4450	17.21	3.86	17.4%
NHFIL	37.9	40.7	37.5	78212	3.07	▲	16%	1.30%	▼ -2.1%	55	27.69	4032	15.79	2.46	15.9%
PHOENIXFIN	34.0	36.8	33.7	199689	6.95	▼	-12%	2.95%	▼ -3.1%	39	19.84	4131	14.29	1.57	10.9%
PLFSL	11.2	11.7	11.1	163282	1.85	▼	-34%	0.79%	▲ 0.9%	44	14.71	3197	7.62	1.03	-13.2%
PREMIERLEA	15.3	16.3	15.2	532492	8.37	▼	-23%	3.55%	▼ -4.4%	49	8.66	1845	13.66	1.27	9.8%
PRIMEFIN	10.5	11.5	10.5	156187	1.72	▲	13%	0.73%	▼ -2.8%	48	11.43	2866	0.00	1.03	-14.1%
UNIONCAP	16.1	16.8	15.6	104675	1.70	▼	-49%	0.72%	▼ -1.2%	46	14.59	2520	0.00	0.99	2.9%
UNITEDFIN	17.8	20.0	17.5	222745	4.05	▲	132%	1.72%	▼ -5.8%	41	20.93	3172	12.98	1.08	8.7%
UTTARAFIN	64.2	69.8	64.0	93765	6.24	▼	-3%	2.64%	▼ -6.4%	35	57.83	8039	8.86	1.41	16.6%
<b>Food &amp; Allied</b>															
AMCL(PRAN)	217.2	220.0	208.3	10113	2.19	▼	-7%	0.93%	▼ -0.2%	50	189.89	1738	31.16	3.57	12.0%
APEXFOODS	242.4	247.7	234.9	138727	33.31	▼	-24%	<b>14.17%</b>	▲ 4.1%	74	107.87	1382	140.12	2.46	1.6%
BANGAS	265.7	275.1	263.1	6126	1.66	▼	-51%	0.71%	▼ -2.9%	49	286.54	1678	0.00	13.25	-5.2%
BATBC	3350.9	3450.0	3340.0	1284	4.33	▲	164%	1.84%	▼ -1.8%	37	2911.67	201054	25.68	22.59	105.7%
BEACHHATCH	15.1	16.1	14.8	54681	0.84	▲	18%	0.36%	▲ 0.7%	41	13.23	625	0.00	1.34	-3.8%
EMERALDOIL	15.7	16.8	15.2	37977	0.61	▼	-1%	0.26%	▲ 0.6%	40	52.07	938	0.00	1.40	37.2%
FINEFOODS	36.5	39.8	36.3	795004	30.50	▲	8%	<b>12.97%</b>	▼ -5.4%	41	8.16	495	42.68	3.65	6.4%
FUWANGFOOD	19.2	20.5	19.1	3096590	61.18	▲	46%	<b>26.03%</b>	▲ 0.0%	49	16.68	1935	25.32	2.31	7.8%
GEMINISEA	434.9	446.7	419.0	90840	39.55	▲	15%	<b>16.82%</b>	▼ -0.7%	58	387.40	1615	118.73	-340.71	598.9%
GHAL	40.6	43.0	40.2	693341	29.12	▼	-13%	<b>12.39%</b>	▼ -2.9%	53	22.99	4426	21.16	2.34	13.2%
MEGCONMILK	30.6	31.9	29.0	29602	0.89	▲	10%	0.38%	▲ 0.3%	47	7.11	490	0.00	-1.29	36.4%
MEGHNA PET	22.1	23.9	21.9	28120	0.64	▲	101%	0.27%	▼ -4.3%	39	5.46	265	0.00	-14.55	31.6%
NTC	627.2	652.0	616.0	11950	7.56	▲	5%	3.21%	▼ -0.7%	52	605.89	4140	38.48	5.00	11.5%
OLYMPIC	273.2	276.5	271.5	18031	4.93	▼	-59%	2.10%	▼ -0.5%	56	283.63	54623	32.45	21.66	89.1%

# Weekly Stock Market Report

## Sectorwise Traded Script

Weekly Market Statistics										Market Technical and Fundamental Indicators						
Ticker	Close	High	Low	Avg Daily Volume	Avg Daily Turnover (BDTmn)	Δ (%)	% of Sector Turnover	Weekly Return	RSI****	EV/EA (10)****	Market Cap	P/E*	P/B**	ROE***		
<b>Food &amp; Allied</b>																
RAHIMAFOOD	142.7	149.5	139.0	16256	2.35	▲	20%	1.00%	▼	-2%	49.68	42.99	2854	0.00	39.09	-4.4%
RDFOOD	16.3	16.7	15.6	900057	14.72	▲	54%	6.26%	▲	4.5%	60.03	14.21	1072	29.30	1.23	4.3%
SHYAMPSUG	52.6	58.0	52.0	7490	0.40	▼	-44%	0.17%	▼	-0.9%	41.83	6.26	263	0.00	63.05	38.2%
ZEALBANGLA	58.3	61.2	56.0	5113	0.30	▼	-30%	0.13%	▼	-3.6%	43.96	6.83	350	0.00	-0.26	26.8%
<b>Fuel &amp; Power</b>																
BARKAPOWER	33.1	34.5	32.1	1195827	40.09	▲	100%	11.10%	▲	2.8%	57.55	29.97	6622	16.31	1.89	13.5%
BDWELDING	20.4	21.5	19.5	59949	1.22	▼	-30%	0.34%	▲	4.1%	47.34	17.70	876	9.36	1.62	13.5%
CVOPRL	216.6	228.0	216.0	156207	34.36	▼	-3%	9.51%	▼	-3.5%	45.63	345.96	5468	0.00	15.16	-19.5%
LINDEBD	1235.8	1260.0	1235.0	2904	3.62	▼	-4%	1.00%	▼	-0.9%	50.27	1156.26	18807	19.74	5.90	31.9%
DESCO	44.0	47.0	43.4	139832	6.23	▲	133%	1.72%	▲	2.3%	59.67	53.57	17493	0.00	1.16	1.2%
DOREENPWR	106.5	114.9	106.1	366450	40.49	▲	4%	11.21%	▼	-1.0%	52.99	53.57	11246	13.75	5.22	34.8%
EASTRNLAB	1152.9	1197.0	1001.0	21909	24.44	▲	201%	6.76%	▲	9.6%	72.29	322.34	1146	27.71	8.06	31.9%
GBBPOWER	16.6	18.3	16.3	556998	9.68	▲	204%	2.68%	▲	1.8%	51.66	16.38	1690	14.22	0.83	5.5%
JAMUNAOIL	182.3	185.8	179.8	63612	11.64	▼	-12%	3.22%	▲	1.3%	48.76	183.11	20130	9.15	1.27	14.5%
KPCL	55.9	57.8	55.3	97272	5.50	▲	22%	1.52%	▲	0.4%	50.19	72.48	20196	10.59	2.09	19.7%
MJLBD	104.4	107.0	104.1	155792	16.50	▲	3%	4.57%	▼	-0.9%	43.05	87.83	31494	15.47	2.99	21.0%
MPETROLEUM	181.6	184.5	180.0	22324	4.08	▲	29%	1.13%	▲	0.2%	45.96	175.19	19652	8.28	1.99	23.5%
PADMAOIL	223.1	230.0	218.0	44453	9.91	▲	129%	2.74%	▲	1.5%	45.93	201.74	21916	9.89	2.40	23.4%
POWERGRID	49.6	52.9	49.4	72352	3.69	▼	-60%	1.02%	▼	-3.7%	47.70	45.78	22861	9.46	0.55	5.2%
SPCL	95.0	101.9	94.6	335621	33.02	▲	53%	9.14%	▼	-0.7%	48.37	134.84	15297	18.58	3.14	19.1%
SUMITPOWER	36.0	37.7	35.7	1169671	43.05	▲	261%	11.92%	▲	1.4%	52.90	36.32	38444	8.90	1.24	13.8%
TITASGAS	41.9	42.5	41.1	105231	4.42	▼	-49%	1.22%	▲	1.2%	54.87	53.90	41448	8.26	0.64	8.1%
UPGDCL	166.8	169.5	160.1	417615	69.31	▲	154%	19.19%	▲	4.0%	65.01	140.53	66593	15.57	4.45	30.5%
<b>Insurance</b>																
AGRANINS	18.4	18.9	18.0	15086	0.28	▼	-31%	0.09%	▲	0.5%	43.73	14.21	505	10.29	1.11	11.6%
ASIAINS	18.9	19.7	18.4	19148	0.36	▲	504%	0.12%	▲	0.0%	44.92	14.27	890	10.99	1.06	9.1%
ASIAPACINS	24.7	28.0	24.7	100910	2.49	▲	74720%	0.84%	▼	-3.1%	50.19	14.44	1046	16.92	1.49	9.2%
BGIC	20.5	21.0	19.8	20496	0.42	▼	-2%	0.14%	▲	0.5%	51.33	16.96	1108	23.03	1.05	5.0%
BNICL	16.2	17.4	15.7	239061	3.95	▲	71%	1.33%	▲	1.9%	51.01	14.44	717	9.82	1.00	12.1%
CENTRALINS	22.8	23.4	21.5	5613	0.13	▲	518%	0.04%	▲	9.6%	56.57	17.41	1073	12.87	1.05	7.7%
CITYGENINS	16.0	16.3	15.5	133475	2.11	▲	25%	0.71%	▼	-1.2%	50.49	12.28	992	14.55	1.11	8.3%
CONTININS	19.0	20.8	18.3	6934	0.13	▲	22%	0.04%	▼	-5.5%	43.86	14.60	625	12.67	1.02	8.3%
DHAKAINS	21.1	22.4	21.0	10258	0.22	▼	-45%	0.07%	▼	-2.8%	44.37	16.43	847	11.72	1.22	9.4%
EASTERNINS	28.4	29.0	27.2	5504	0.16	▲	130%	0.05%	▲	2.5%	51.23	25.11	1224	8.74	0.76	9.1%
EASTLAND	21.4	22.5	20.9	31281	0.67	▲	173%	0.23%	▼	-0.9%	47.48	19.87	1470	9.06	0.88	8.1%
FEDERALINS	11.0	11.5	10.5	225665	2.50	▲	3%	0.84%	▲	3.8%	56.93	10.23	688	21.53	1.03	4.9%
GLOBALINS	13.9	14.4	13.2	56440	0.77	▲	186%	0.26%	▲	3.0%	52.20	12.18	487	3.61	1.21	4.6%
GREENDELT	61.6	64.0	58.0	28817	1.70	▲	1357%	0.57%	▲	1.8%	59.45	47.74	4971	18.39	0.84	4.2%
ISLAMIINS	27.3	28.4	26.6	10882	0.30	▼	-81%	0.10%	▼	-3.2%	42.79	14.84	927	18.99	2.21	11.2%
JANATAINS	16.3	17.4	16.3	7140	0.12	▼	-49%	0.04%	▲	0.0%	45.54	12.30	625	20.63	1.22	3.8%
KARNAPHULI	15.5	16.2	15.4	10415	0.16	▲	96%	0.06%	▼	-1.9%	44.47	12.03	631	11.07	0.79	7.3%
MERCINS	23.8	24.0	20.4	675653	15.20	▲	322%	5.12%	▲	11.7%	67.74	12.09	1026	16.88	1.37	8.3%
NITOLINS	28.4	28.8	27.9	3013	0.09	▼	-21%	0.03%	▲	2.5%	51.81	21.36	1142	11.65	1.51	13.8%
NORTHNRINS	20.9	21.4	20.2	58387	1.22	▲	36%	0.41%	▼	-2.3%	43.89	17.16	892	12.15	1.14	8.9%
PARAMOUNT	16.5	17.1	16.0	463191	7.55	▲	412%	2.54%	▼	-1.2%	49.70	11.24	475	14.89	1.25	7.7%
PEOPLESINS	21.2	21.6	19.7	32178	0.67	▲	149%	0.22%	▲	3.9%	58.31	14.04	979	8.51	0.93	10.9%
PHENIXINS	26.1	26.6	25.7	3511	0.09	▼	-22%	0.03%	▲	0.0%	50.40	23.62	1053	10.28	0.75	6.9%
PIONEERINS	28.4	28.8	27.7	5406	0.15	▼	-31%	0.05%	▲	0.7%	56.93	30.14	1987	10.18	0.90	8.7%
PRAGATIINS	25.1	26.9	23.9	111564	2.81	▲	674%	0.95%	▼	-6.7%	33.33	24.79	1465	9.20	0.48	4.5%
PRIMEINSUR	17.4	18.0	17.2	29259	0.52	▲	71%	0.17%	▼	-1.1%	50.51	14.62	711	8.02	1.06	13.5%
PROVATIINS	17.6	18.8	17.3	66858	1.19	▼	-53%	0.40%	▼	-5.9%	49.78	12.98	523	9.98	1.12	11.3%
PURABIGEN	15.3	15.7	14.6	169301	2.58	▲	117%	0.87%	▲	4.8%	59.24	12.38	756	11.65	1.44	10.5%
RELIANCINS	51.5	52.0	49.7	18355	0.94	▲	34%	0.32%	▲	3.0%	56.64	48.57	4069	9.75	0.92	9.7%
REPUBLIC	26.2	27.4	25.7	12230	0.32	▲	212%	0.11%	▼	-1.9%	39.75	13.83	918	14.52	1.99	13.5%
RUPALIINS	19.6	20.1	18.9	56621	1.11	▲	110%	0.37%	▲	2.6%	64.34	16.41	1301	11.71	0.82	7.5%
SONARBAINS	16.0	16.3	15.8	28283	0.45	▲	32%	0.15%	▼	-1.2%	52.35	16.02	549	10.73	1.05	10.2%
STANDARINS	30.8	32.6	30.6	54348	1.71	▼	-80%	0.58%	▼	-4.0%	42.67	13.23	1002	15.18	1.78	6.7%
TAKAFULINS	26.6	26.6	25.1	34051	0.89	▲	57%	0.30%	▲	3.9%	55.30	15.80	1008	14.00	1.66	12.3%
UNITEDINS	26.0	26.5	25.6	4502	0.12	▲	74%	0.04%	▼	-1.1%	42.85	23.40	1092	10.79	0.91	8.8%

# Weekly Stock Market Report

Script	Weekly Market Statistics									Market Technical and Fundamental Indicators						
	Ticker	Close	High	Low	Avg Daily Volume	Avg Daily Turnover (BDTmn)	Δ III	% of Sector Turnover	weekly Return	RSI****	EIVIA (10)*****	Market Cap	P/E*	P/B**	ROE***	
<b>Life Insurance</b>																
DELTALIFE	116.1	118.0	108.7	187081	21.37	▲	18%	7.19%	▲	2%	71	96	14367.4	0.0	0	0
FAREASTLIF	84.1	85.5	75.0	264117	21.01	▲	155%	7.07%	▲	9%	77	64	6285.9	0.0	0	0
MEGHNALIFE	65.0	65.2	59.6	270130	17.00	▲	122%	5.72%	▲	7%	77	48	2178.9	0.0	0	0
NATLIFEINS	157.4	157.6	146.6	12986	2.00	▲	8%	0.67%	▲	2%	71	192	14853.4	0.0	0	0
PADMALIFE	43.8	45.4	42.3	911146	39.93	▲	74%	13.44%	▼	-1%	57	29	1419.1	0.0	0	0
POPULARLIF	129.3	130.0	99.0	559475	62.71	▲	115%	21.11%	▲	30%	92	72	7813.4	0.0	0	0
PRAGATILIF	111.3	111.9	102.0	57954	6.22	▲	81%	2.09%	▲	5%	69	107	1154.4	0.0	0	0
PRIMELIFE	57.6	58.0	51.4	80366	4.38	▲	8%	1.47%	▲	7%	73	37	1758.0	0.0	0	0
PROGRESLIF	63.4	65.0	60.0	4281	0.27	▲	18%	0.09%	▲	1.1%	49	55	815.7	0.0	0	0
RUPALILIFE	58.0	58.7	52.8	1050549	58.42	▲	58%	19.66%	▲	6.8%	73	30	1608.9	0.0	0	0
SANDHANINS	31.3	31.9	29.4	300578	9.25	▲	82%	3.11%	▲	5.7%	70	35	2861.3	0.0	0	0
SUNLIFEINS	24.0	24.8	22.7	19970	0.47	▼	-45%	0.16%	▲	4.8%	61	26	841.4	0.0	0	0
<b>ITSector</b>																
AAMRATECH	31.5	33.5	31.2	545861	17.72	▲	0.56	9.20%	▼	-0.6%	47.83	26.77	1744.1	16.31	1.39	6.8%
AAMRANET	100.7	105.8	98.4	787568	80.93	▼	-0.19	42.01%	▼	-2.8%	59.76	26.77	5341.2	28.34	5.23	12.7%
AGNISYSL	21.8	23.3	21.7	862196	19.53	▼	-0.07	10.14%	▼	-1.8%	52.91	20.23	1506.4	20.40	1.52	6.9%
BDCOM	30.0	32.8	29.8	1385146	43.53	▼	-0.46	22.60%	▼	-5.4%	52.79	23.00	1395.7	21.32	2.06	9.9%
DAFODILCOM	37.4	39.2	36.9	421450	16.17	▼	-0.21	8.39%	▲	1.6%	52.13	18.77	1866.7	15.82	2.84	16.9%
INTECH	18.5	19.9	18.4	620587	11.99	▼	-0.23	6.23%	▼	-3.6%	43.74	11.99	474.6	17.32	1.65	10.2%
ISNLTD	22.5	23.5	22.2	43484	1.13	▲	0.86	0.59%	▼	-1.7%	42.20	12.31	245.7	0.00	1.62	-3.7%
ITC	31.4	33.1	31.3	50423	1.62	▼	-0.26	0.84%	▼	-0.9%	50.62	0.00	3267.2	27	2.01	6.6%
<b>Miscellaneous</b>																
AMANFEED	60.2	64.8	59.9	302093	18.73	▼	-54%	3.05%	▼	-5.8%	44.64	44.33	6992.8	11.81	2.43	20.3%
ARAMIT	345.3	352.0	340.9	4127	1.43	▲	42%	0.23%	▼	-1.3%	51.73	459.86	2071.8	37	2.23	5.5%
BERGERPBL	2096.6	2115.0	2095.0	100	0.21	▲	70%	0.03%	▼	-1.3%	42.50	1930.59	48617.9	29.23	8.40	35.2%
BEXIMCO	30.6	31.8	28.8	15074466	460.39	▲	118%	75.00%	▲	6.6%	74.81	28.36	25538.4	22	0.42	1.7%
BSC	43.6	45.3	43.5	325008	14.45	▲	15%	2.35%	▼	-1.4%	44.93	328.24	6650.5	88.14	0.80	1.1%
GOBALLPEN	77.4	80.5	77.1	21232	1.67	▼	-3%	0.27%	▼	-2.3%	45.95	61.24	691.0	79	0.48	1.1%
KBPPWBIL	17.4	18.6	17.1	1491219	26.81	▲	145%	4.37%	▲	3.0%	56.44	21.48	1706.6	21.02	1.47	6.4%
MIRACLEIND	41.0	44.8	39.5	1380168	58.65	▲	78%	9.56%	▲	4.6%	52.05	22.54	1201.5	33	0.94	2.9%
NFML	15.4	16.8	15.3	959540	15.43	▲	18%	2.51%	▲	0.0%	48.56	18.03	1242.9	15.34	1.22	8.3%
SAVAREFR	162.7	169.0	155.7	992	0.16	▲	274%	0.03%	▼	-1.3%	48.16	46.58	226.6	441	26.63	2.8%
SINOBANGLA	44.8	49.3	44.4	332216	15.59	▲	21%	2.54%	▼	-1.3%	38.61	26.58	895.8	27.82	1.71	6.2%
ZEALBANGLA	58.3	61.2	56.0	5113	0.30	▼	-30%	0.05%	▼	-3.6%	43.96	6.83	349.8	-	-0.26	26.8%
<b>Pharmaceuticals &amp; Chemicals</b>																
ACI	403.2	413.8	402.1	80337	32.80	▲	24%	3.22%	▼	-0.9%	48.02	526.17	19435.2	22	1.84	10.5%
ACIFORMULA	184.6	190.9	182.7	19514	3.63	▲	7%	0.36%	▼	-1.2%	47.90	174.12	8307.0	43.03	3.40	11.2%
ACMELAB	104.5	108.0	104.4	130770	13.79	▼	-14%	1.35%	▼	-1.2%	42.76	0.00	22112.4	15	1.94	12.7%
ACTIVEFINE	33.6	34.5	31.7	926153	31.00	▲	128%	3.04%	▲	6.0%	59.99	56.04	6718.2	9.90	1.72	18.3%
ADVENT	48.4	55.0	40.5	6756870	338.99	▲	0%	33.25%	▲	0.0%	0.00	0.00	3320.2	83	0	0
AFCAGRO	40.1	41.6	36.9	714976	28.43	▲	264%	2.79%	▲	9.0%	61.23	66.76	3652.3	13.56	2.75	22.2%
AMBEEPCHA	428.7	429.9	390.0	18154	7.51	▲	34%	0.74%	▲	4.3%	62.32	252.53	1028.9	134	16.98	12.1%
BEACONPHAR	20.6	21.0	19.8	292323	5.97	▼	-2%	0.59%	▲	2.5%	59.82	14.68	4758.6	39.62	1.59	3.5%
BXPHARMA	105.1	110.9	104.5	471814	51.11	▼	-41%	5.01%	▼	-3.6%	49.38	75.61	42624.0	18	1.70	9.3%
BXSYNTH	10.8	11.9	10.8	96131	1.10	▼	-60%	0.11%	▼	-6.1%	42.02	8.09	936.5	0.00	0.52	-11.9%
CENTRALPHL	16.8	18.1	16.1	877496	15.21	▲	115%	1.49%	▲	4.3%	55.28	21.92	1916.8	33	1.10	6.5%
FARCHEM	18.0	19.0	17.0	1086376	19.70	▲	134%	1.93%	▲	5.9%	60.77	30.74	3244.4	13.44	1.30	12.3%
GHCL	38.4	40.5	38.3	26894	1.06	▼	-46%	0.10%	▼	-1.5%	47.25	37.37	2764.8	33	0.71	2.0%
GLAXOSMITH	1459.2	1495.0	1450.0	369	0.54	▲	91%	0.05%	▼	-2.3%	41.06	1798.16	17578.2	26.26	6.80	25.8%
IBNSINA	249.7	256.8	245.0	161277	40.64	▲	20%	3.99%	▲	1.6%	53.34	150.72	7123.1	28	6.45	23.8%
IMAMBUTTON	32.5	34.9	32.0	18409	0.60	▲	62%	0.06%	▼	-3.0%	41.37	8.98	250.3	0.00	5.23	-5.9%
JMISMDL	177.2	184.5	176.9	48933	8.76	▼	-11%	0.86%	▼	-2.9%	45.67	155.76	1949.2	27	2.62	10.3%
KEYACOSMET	10.6	11.3	9.8	15434060	162.78	▲	324%	15.97%	▲	8.2%	60.87	14.28	10622.3	5.86	0.83	14.0%
KOHINOOR	378.5	383.5	371.1	3476	1.31	▼	-22%	0.13%	▲	0.1%	54.71	342.06	5304.9	35	9.57	30.2%
LIBRAINFU	642.8	648.0	571.0	25060	15.45	▲	83%	1.52%	▲	8.5%	71.03	288.53	804.5	155.95	0.41	0.3%
MARICO	1192.0	1210.0	1180.0	428	0.51	▼	-26%	0.05%	▼	-0.8%	54.23	1500.74	37548.0	24	23.76	87.6%
ORIONINFU	52.9	55.0	52.7	87040	4.71	▼	-7%	0.46%	▼	-2.4%	42.49	49.37	1077.0	32.26	4.21	12.0%
ORIONPHARM	45.8	47.0	45.6	245513	11.35	▼	-17%	1.11%	▼	-1.3%	39.30	34.22	10717.2	15	0.65	4.8%
PHARMAID	486.2	506.0	469.7	86581	42.19	▲	20%	4.14%	▲	1.8%	52.07	229.24	1516.9	38.50	9.82	20.4%
RECKITTBN	1800.1	1976.0	1800.0	1276	2.34	▼	-38%	0.23%	▼	-6.2%	46.52	1580.74	8505.5	25	35.99	134.0%
RENATA	1239.2	1258.9	1235.0	1743	2.17	▼	-50%	0.21%	▼	-0.8%	45.26	1220.37	86782.4	30.27	6.70	22.4%
SALVOCHEM	24.8	26.9	24.5	2516524	65.58	▼	-3%	6.43%	▼	-4.2%	51.33	13.38	1535.8	36	2.19	6.9%
SOURPHARMA	313.9	318.9	313.6	276894	87.37	▲	4%	8.57%	▼	-0.4%	48.59	249.04	231467.1	19.91	4.72	23.8%
WATACHEM	325.0	345.0	323.5	68863	22.85	▼	-43%	2.24%	▼	-5.7%	55.21	150.68	2964.5	91	4.39	5.4%

# Weekly Stock Market Report

## Sectorwise Traded Script

Ticker	Weekly Market Statistics									Market Technical and Fundamental Indicators						
	Close	High	Low	Avg Daily Volume	Avg Daily Turnover (BDTmn)	Δ in Turnover	% of Sector Turnover	Weekly Return	RSI****	EMA (10)****	Market Cap	Trading P/E*	P/B**	ROE***		
<b>Service&amp;RealEstate</b>																
EHL	47.9	50.0	47.8	160369	7.77	▲	95%	19.03%	▼	-1%	48.59	34.06	4471	16.93	3.01	15.5%
SAIFPOWER	27.8	29.0	27.4	780361	22.00	▲	26%	53.85%	▲	2%	51.97	71.78	3233	20.00	0	0
SAMORITA	74.4	77.5	74.1	56854	4.31	▲	21%	10.56%	▼	-1%	44.30	76.70	1337	36.78	1.72	8.0%
SAPORTL	31.2	32.8	30.5	213974	6.77	▲	66%	16.56%	▲	4%	56.00	55.12	7074	51.15	1.24	2.6%
<b>Tannery</b>																
APEXFOOT	320.1	326.0	320.0	9444	3.04	▲	16%	3.14%	▼	-1%	44.51	334.38	3601	11.06	1.41	3.3%
APEXTANRY	140.5	145.4	140.0	16285	2.33	▼	-62%	2.41%	▼	-2%	43.94	114.19	2141	92.43	1.91	4.0%
BATASHOE	1152.6	1160.0	1150.0	1257	1.45	▲	92%	1.50%	▼	-1%	41.26	1326.22	15768	13.55	4.43	32.0%
FORTUNE	32.3	34.4	32.2	2157464	71.84	▲	22%	74.31%	▲	0%	47.54	0.00	3509	17.48	0	0
LEGACYFOOT	55.2	59.9	55.0	301300	17.34	▼	-3%	17.94%	▼	-5%	39.99	25.79	628	0.00	7.60	3.5%
SAMATALETH	59.3	61.5	58.5	11359	0.68	▲	67%	0.70%	▲	2%	44.43	23.02	612	0.00	4.02	-1.1%
<b>Telecommunication</b>																
GP	486.0	490.0	472.8	173081	83.31	▲	41%	95.19%	▲	2%	59.38	253.07	656246	23.93	19.55	85.4%
BSCCL	93.1	99.8	92.9	43810	4.21	▼	-11%	4.81%	▼	-5%	43.11	103.56	15353	70.53	2.55	5.5%
<b>Travel&amp;Leisure</b>																
PENINSULA	21.9	24.1	21.9	1010068	23.17	▲	87%	18.51%	▲	0%	52.74	16.91	2599	115.26	0.71	1.7%
UNITEDAIR	4.8	5.0	4.7	599517	2.89	▲	11%	2.31%	▼	-2%	46.71	8.87	3299	0.00	0.49	-16.3%
UNIQUEHRL	58.3	62.0	58.1	1652224	99.12	▼	-17%	79.18%	▼	-6%	44.94	45.32	17164	28.30	0.66	2.0%
<b>Jute</b>																
JUTESPINN	164.8	172.0	153.5	2937	0.47	▲	89%	0.45%	▲	3%	53.34	48.34	280	0.00	-0.84	28.7%
NORTHERN	445.0	447.8	395.0	225293	93.52	▲	1027%	89.75%	▲	1%	54.87	256.61	953	329.71	5.87	5.8%
SONALIANSH	257.6	257.6	213.5	43771	10.21	▲	141%	9.80%	▲	19%	82.22	124.26	699	170.60	1.15	0.7%
<b>Textile</b>																
AL-HAJTEX	82.5	85.6	82.2	59470	5.00	▲	37%	0.67%	▼	-2%	46.52	102.83	1672	64.96	6.68	13.4%
ALLTEX	11.5	12.0	11.3	48944	0.56	▲	8%	0.08%	▲	1%	46.34	20.53	644	0.00	0.45	-8.0%
ANLIMAYARN	31.5	34.3	31.1	632070	20.71	▲	540%	2.79%	▲	2%	51.19	19.33	563	75.00	2.85	5.0%
APEXSPINN	129.0	130.4	119.5	101378	12.76	▲	14%	1.72%	▲	2%	56.58	74.10	1084	45.74	2.44	5.3%
ARGONDENIM	27.4	29.3	27.2	426442	12.12	▲	19%	1.63%	▲	0%	51.57	24.01	3287	8.49	1.12	12.4%
ALIF	12.8	13.8	12.2	10205390	134.99	▲	116%	18.16%	▲	6%	54.07	12.89	1400	6.40	0.75	11.8%
CNATEX	7.8	8.4	7.6	756346	6.03	▲	114%	0.81%	▲	3%	48.26	11.60	1867	13.53	0.51	7.0%
DACCADYE	8.6	9.0	8.5	83933	0.74	▼	-10%	0.10%	▲	0%	42.11	14.14	750	0.00	0.56	-22.9%
DELTA SPINN	9.1	9.8	9.0	1295552	12.15	▲	127%	1.63%	▲	1%	52.48	9.54	1515	41.54	0.69	2.0%
DSHGARME	233.7	235.0	215.6	45338	10.23	▲	109%	1.38%	▲	5%	64.49	131.08	1413	45.85	15.26	44.6%
DSSL	20.9	21.9	20.3	3738621	79.04	▲	30%	10.63%	▼	0%	59.37	0.00	2764	15.75	2.45	13.5%
DULAMIACOT	41.2	47.9	40.6	4896	0.21	▼	-42%	0.03%	▼	-8%	40.20	7.03	311	0.00	4.11	-37.4%
ENVOYTEX	31.4	33.0	31.2	25188	0.81	▼	-49%	0.11%	▼	0%	47.21	46.38	5164	15.14	0.86	5.4%
ETL	15.4	16.5	14.7	1403675	22.29	▲	147%	3.00%	▲	3%	54.93	0.00	2439	12.37	1.15	8.8%
FAMILYTEX	7.1	7.7	6.9	1560515	11.42	▲	143%	1.54%	▲	1%	51.71	11.17	2281	0.00	0.55	0.0%
FEKDIL	17.7	18.5	17.3	538957	9.70	▲	71%	1.30%	▲	3%	58.84	23.12	3286	9.15	0.96	10.6%
GENNEXT	9.2	9.9	8.8	6606148	62.21	▲	216%	8.37%	▲	5%	55.00	9.34	4140	10.61	0.79	4.7%
HFL	24.7	25.7	24.6	169052	4.24	▲	13%	0.57%	▼	0%	45.80	21.07	2249	20.41	0.65	2.1%
HRTEX	33.0	35.1	32.6	400091	13.53	▲	14%	1.82%	▼	-1%	50.30	21.56	835	19.64	2.25	9.9%
HWAWELLTEX	37.2	38.0	36.5	15321	0.57	▲	188%	0.08%	▼	-1%	45.61	29.11	2083	16.61	1.32	7.5%
MAKSONSPIN	9.9	10.8	9.5	3207860	32.73	▲	106%	4.40%	▲	4%	52.97	8.19	2359	27.32	0.53	1.7%
MALEKSPIN	18.9	20.5	18.7	113607	2.19	▲	185%	0.30%	▼	-2%	47.11	16.26	3659	12.77	0.42	3.4%
MATINSPINN	38.1	39.0	37.5	11790	0.45	▲	136%	0.06%	▲	1%	49.33	39.42	3714	18.96	0.91	6.4%
METROSPIN	12.1	13.0	11.9	1569482	19.47	▲	95%	2.62%	▲	3%	50.33	9.11	732	0.00	0.76	-4.0%
MHSML	16.5	17.8	16.0	274477	4.66	▲	86%	0.63%	▲	2%	52.91	28.59	1556	17.04	0.98	9.9%
MITHUNKNIT	26.9	27.7	26.6	31184	0.84	▲	73%	0.11%	▼	-1%	45.39	73.83	874	0.00	1.22	0
MODERN DYE	234.0	241.0	230.0	1446	0.34	▲	51%	0.05%	▼	-3%	48.70	122.02	320	193.39	49.36	21.5%
NURANI	15.8	17.2	15.7	1500673	24.83	▲	11%	3.34%	▼	-1%	47.17	0.00	1443	8.75	1.36	11.7%
PDL	16.1	17.2	16.0	370353	6.18	▼	-8%	0.83%	▼	-1%	51.83	0.00	2047	8.27	1.05	13.8%
PTL	44.5	47.1	43.8	1382810	63.16	▲	181%	8.49%	▲	0%	53.52	16.03	5743	24.27	2.33	9.4%
PRIMETEX	23.9	25.7	23.8	142145	3.52	▲	81%	0.47%	▼	0%	47.43	15.09	913	22.76	0.49	2.2%
QUEENSOUTH	28.4	29.5	27.3	924311	26.28	▼	-17%	3.53%	▲	3%	40.88	0.00	2844	37.87	1.94	0.0%
RAHIMTEXT	244.1	255.8	243.2	20644	5.13	▼	-3%	0.69%	▼	-1%	50.44	223.20	1908	48.11	6.83	17.5%
REGENTTEX	17.3	19.3	17.2	840736	15.72	▼	-1%	2.11%	▼	-6%	50.76	0.00	1998	14.18	0.57	4.0%
RNSPIN	13.7	14.6	13.6	759524	10.73	▲	30%	1.44%	▲	1%	51.59	21.44	4074	11.66	0.64	3.9%
SAFKOSPINN	16.7	17.9	16.5	706103	12.22	▲	323%	1.64%	▲	1%	48.17	17.04	486	33.97	0.96	2.1%
SAIHAMCOT	16.1	17.5	15.8	536429	8.93	▲	20%	1.20%	▼	-2%	53.66	14.48	2395	17.69	0.71	4.7%
SAIHAMTEX	20.5	21.4	20.4	220358	4.64	▼	-50%	0.62%	▼	-3%	50.09	15.08	1857	21.58	0.76	3.8%
SHASHADNIM	58.7	63.8	57.9	489259	29.71	▼	-30%	4.00%	▲	1%	61.47	36.73	7018	12.07	1.31	11.3%

# Weekly Stock Market Report

## Sectorwise Traded Script

Weekly Market Statistics										Market Technique						
Ticker	Close	High	Low	Avg Daily Volume	Avg Daily Turnover (BDTmn)	Δ in Turnover	% of Sector Turnover	Weekly Return	RSI****	EMA (10)****	Market Cap BDT Mn	Trailing P/E*	P/B**	ROE***		
<b>Textile</b>																
SIMTEX	28.0	29.3	27.6	388459	11.13	▲	70%	1.47%	▼	-3%	40.93	0.00	1846	12.04	1.30	10.8%
SONARGAOI	18.6	19.9	18.4	41409	0.78	▼	-34%	0.10%	▲	1%	40.76	8.56	492	0.00	0.64	-3.6%
SQUARETEX	54.8	55.4	53.7	56801	3.11	▼	-13%	0.41%	▲	1%	53.10	73.22	10295	30.73	1.40	5.6%
TALLUSPIN	9.9	10.4	9.8	86981	0.87	▼	-31%	0.12%	▲	1%	44.06	19.36	884	0.00	0.76	-2.1%
TOSRIFA	21.3	23.1	21.2	247233	5.52	▲	19%	0.73%	▼	-3%	44.42	18.00	1345	18.85	0.64	4.0%
TUNGHAI	9.0	9.5	8.9	228053	2.08	▲	35%	0.28%	▲	1%	45.48	12.11	960	10.75	0.75	9.4%
ZAHEENSPIN	13.0	14.0	12.1	2740677	36.32	▼	-47%	4.81%	▼	-4%	50.18	19.34	2562	20.58	2.13	10.4%
ZAHINTEX	14.8	15.7	14.7	252187	3.85	▼	-2%	0.51%	▼	-1%	47.84	20.41	1211	20.53	0.61	2.8%



# Weekly Stock Market Report

## Latest Corporate Declarations

Ticker	Declared Dividend	EPS	NAV	Cash Flow	Record Date
PREMIERLEA	5%C 5%B	1.12	16.98	12.05	26.04.18
BAYLEASING	10%C 5%B	1.24	19.94	0.21	30.04.18
MERCANBANK	17%C 5%B	3.89	22.74	3.72	15.04.18
UNITEDIN	11%C	2.41	29.97	1.07	15.04.18
CITYGENINS	10%B	1.10	15.76	0.82	26.04.18
UTTARAFIN	30%C	7.25	49.62	11.33	26.04.18
TAKAFULINS	5%C 6%B	1.90	17.49	0.59	23.04.18
UTTARABANK	20%C	3.83	34.81	-7.17	03.05.18
FASFIN	10%B	1.10	14.67	8.01	19.04.18
PUBALIBANK	10%B	1.89	27.12	1.57	19.04.18
PREMIERBAN	15%B	2.83	18.91	3.58	25.04.18
STANDBANKL	10%B	1.56	16.94	0.84	25.04.18
CONTININS	5%C 5%B	1.49	19.06	1.33	20.05.18
BANKASIA	12.5%B	2.14	21.21	-2.47	26.04.18
PRIMEBANK	7%C 10%B	1.18	24.11	7.27	06.05.18
IFIC	12%B	2.34	18.49	1.31	10.05.18
ALARABANK	15%C 5%B	3.15	20.87	10.40	03.05.18

## Right Offers

Ticker	Right Proposal	Record Date	Premium
SOUTHEASTB	1R:2	Proposed	Par
IPDC	1R:2	Proposed	3.00
RSRMSTEEL	2R:3	Proposed	15.00

**Weekly Block Transactions**

Instr Code	Max Price	Min Price	Trades	Quantity	Value(In mn)
AIBL1STIMF	8.50	8.50	1.00	520880.00	4.43
IFADAUTOS	115.00	115.00	1.00	27000.00	3.11
BRACBANK	107.00	86.00	10.00	341635.00	35.53
GRAMEENS2	16.50	16.50	1.00	1400000.00	23.10
LRGLOBMF1	8.00	8.00	2.00	975859.00	7.81
OLYMPIC	273.00	273.00	1.00	43600.00	11.90
POPULARLIF	109.00	100.00	9.00	811235.00	86.32
GP	486.00	474.00	17.00	915208.00	437.52
GREENDELMF	9.40	9.40	1.00	200000.00	1.88
STANDARINS	32.40	32.40	1.00	40000.00	1.30
RUPALILIFE	56.40	50.00	7.00	972500.00	49.26
SQURPHARMA	318.00	314.80	7.00	720000.00	227.52
APEXFOODS	230.10	230.10	1.00	9074.00	2.09
BATBC	3361.80	3361.80	2.00	20350.00	68.41
BDCOM	32.20	32.20	1.00	50000.00	1.61
EBL	41.00	41.00	2.00	500000.00	20.50
OAL	17.50	17.50	1.00	75000.00	1.31
RENATA	1250.00	1250.00	1.00	4947.00	6.18
SINGERBD	176.00	176.00	2.00	300000.00	52.80
SUMITPOWER	36.70	36.70	1.00	1000000.00	36.70
UPGDCL	165.00	165.00	1.00	200000.00	33.00
ALARABANK	25.00	25.00	2.00	5330000.00	133.25
AIL	115.00	115.00	1.00	7300.00	0.84
GLAXOSMITH	1460.00	1460.00	1.00	20000.00	29.20
MEGHNALIFE	62.00	62.00	1.00	11600.00	0.72
STYLECRAFT	1660.00	1660.00	1.00	500.00	0.83
CITYBANK	42.20	40.90	11.00	1300710.00	54.35
SPCL	98.80	98.80	2.00	600000.00	59.28

# Weekly Stock Market Report



LBSL's Research Reports are also available on  
Bloomberg LANB <GO>  
lankabangla.duinvest.com

## Disclaimers

This document ("the Report") is published by LankaBangla Securities Ltd ("LBSL") for information only of its clients. All information and analysis in this Report have been compiled from and analyzed on the basis of LBSL's own research of publicly available documentation and information. LBSL has prepared the Report solely for informational purposes and consistent with Rules and regulations of SEC. The information provided in the Report is not intended to, and does not encompass all the factors to be considered in a best execution analysis and related order routing determinations. LBSL does not represent, warrant, or guarantee that the Report is accurate. LBSL disclaims liability for any direct, indirect, punitive, special, consequential, or incidental damages related to the Reports or the use of the Report. The information and analysis provided in the Report may be impacted by market data system outages or errors, both internal and external, and affected by frequent movement of market and events. Certain assumptions have been made in preparing the Report, and changes to the assumptions may have a material impact on results. The Report does not endorse or recommend any particular security or market participant. LBSL, its analysts and officers confirm that they have not received and will not receive any direct or indirect compensation in exchange for expressing any specific recommendation, opinion or views in its Report. The information and data provided herein is the exclusive property of LBSL and cannot be redistributed in any form or manner without the prior written consent of LBSL. This disclaimer applies to the Report in their entirety, irrespective of whether the Report is used or viewed in whole or in part.

## LBSL Capital Market Research Department

Analyst	Designation	E-mail
Salma Yeasmin Xinat	Senior Research Associate	salma@lbsbd.com
Ahmed Irtiza	Senior Research Associate	ahmed.irtiza@lbsbd.com
Quazi Naureen Ahmed	Research Associate	naureen.quazi@lbsbd.com
Mashqurur Rahman	Research Associate	mashqurur.rahman@lbsbd.com

## Institutional & Foreign Trade Department

Rehan Muhammad                      Head of Institutional & Foreign Trade                      rehan@lbsbd.com/rmuhammad1@bloomberg .net

### LankaBangla Securities Limited

Capital Market Research Department

Corporate Office

A.A. Bhaban (Level-5)

23 Motijheel C/A

research@lbsbd.com

Dhaka-1000, Bangladesh

Phone: +880-2-9513794 (Ext-122)

Fax: +880-2-9563902

**Website: [www.lbsbd.com](http://www.lbsbd.com)**