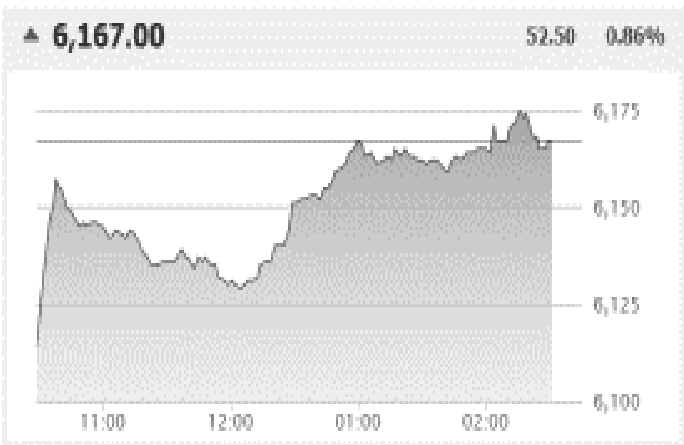


Daily Stock Market Report

Sunday, September 10, 2017

DSEX IN THE SESSION



Source: <http://lankabd.com/>

Market Activities Summary

	Today	Prev Day	% Change
Mkt. Turnover (BDT mn)	12,599.0	11,442.7	↑ 10.11%
Mkt. Turnover (USD mn)	156.35	142.00	↑ 10.11%
Total No of Trade	181,017	162,184	↑ 11.61%
Trade Volume (mn)	394.33	358.27	↑ 10.06%

Market Valuation

	Today	Prev Day	% Change
Mkt. Capitalization (BDT bn)	4,121.9	4,077.6	↑ 1.08%
Mkt. Capitalization (USD bn)	51.15	50.60	↑ 1.08%
Trailing Market P/E*	17.43	17.16	↑ 1.54%
Annualized Market P/E**	19.04	18.76	↑ 1.51%
Market P/BV	2.39	2.36	↑ 1.27%
Dividend Yield	2.83%	2.79%	↑ 1.27%

Market Technicals

	Today	Prev Day	% Change
Avg Trade Volume 20 days (mn)	290.1	284.0	↑ 2.14%
Avg Turnover 20 Days (BDT mn)	9,080	8,892	↑ 2.12%
DSEX EMA (22 days)	6,004.5	5,981.32	↑ 0.39%
DSEX RSI (14 days)	81.45	78.46	↑ 3.81%
DSEX MFI (14 days)	94.38	88.19	↑ 7.02%

Market Movers

Turnover Leaders

Company	Closing Price	% Change	Turnover (BDT mn)
LANKABAFIN	63.90	3.4%	616.88
PREMIERBAN	17.10	5.6%	367.90
SQURPHARMA	298.7	2.6%	351.86
NBL	13.90	0.7%	318.63
LAFSURCEML	65.0	10.0%	312.70
GP	428.40	5.4%	307.90
SUMITPOWER	42.1	0.5%	298.34
FORTUNE	59.30	-0.5%	291.26
ALARABANK	23.9	0.4%	256.82
EXIMBANK	16.40	2.5%	253.11

Top Gainers/Least Losers

Company	Closing Price	% Change	Turnover (BDT mn)
LAFSURCEML	65.00	9.98%	312.70
MEGHNACEM	118.70	8.50%	39.48
CITYGENINS	20.50	7.89%	63.17
MIRACLEIND	66.20	7.64%	153.07
PROVATIINS	21.00	7.14%	36.52
MITHUNKNIT	54.00	5.88%	173.63
ARAMITCEM	46.10	5.73%	93.35
PREMIERBAN	17.10	5.56%	367.90
TAKAFULINS	27.00	5.47%	6.74
GP	428.40	5.36%	307.90

Top Losers/Least Gainers

Company	Closing Price	% Change	Turnover (BDT mn)
DULAMIACOT	19.60	-9.68%	1.08
SAVAREFR	87.10	-7.54%	0.17
SHYAMPSUG	28.70	-6.51%	0.74
USMANIAGL	102.60	-5.52%	21.52
RELIANCINS	56.00	-5.25%	0.00
FINEFOODS	44.90	-5.07%	41.87
LEGACYFOOT	43.10	-4.65%	5.36
APEXSPINN	147.40	-4.47%	14.39
MEGCONMILK	17.70	-4.32%	0.74
ZEALBANGLA	62.60	-4.28%	1.81

Notes: *Trailing P/E is based on latest twelve months trailing Earnings (Continuing Operations); **Annualized P/E is calculated considering latest quarterly earnings *** (VWAP)- Volume weighted Average Price, source: Bloomberg ****Price Return has been calculated considering 1 and 5 trading days*****14 days Relative Strength Index (RSI) at 70 & 30 Level signals overbought & oversold position respectively. (Source: Amibroker)

Disclaimer available on page no. 11

Market Breadth

158

28

143

Index Summary

Symbol	Today	Prev Day	Point Change	% Change
DSEX	6,167.49	6,114.99	52.50 ↑	0.86%
DS30	2,201.44	2,178.50	22.93 ↑	1.05%
DSES	1,368.24	1,347.86	20.38 ↑	1.51%

Bangladesh [6,167.49, 0.86%]

Broad index gained ~52.50 points today. Throughout the day, index remained positive and closed green at ~6,167.49 point. The growth of today's index was backed by increase in market capitalization of two large sectors of the bourse, Telecommunication and Cement. Among the major sectors Cement, Telecommunication, and NBL sectors registered 6.49%, 5.16%, and 1.02% gains respectively. A total number of 0.181017 mn trades were executed in today's trading session generating turnover of BDT 12,599.04 mn with trading volume of 394.33 mn securities. At DSE, 143 securities gained price, 158 declined and 28 remained unchanged. DS30 and DSES were 22.93 and 20.38 points in the green respectively. LANKABANGLA topped the turnover list followed by PREMIERBAN, SQURPHARMA, NBL, LAFSURCEML, and GP.

Macro Update:

Interest rate on deposits rises for the first time in 2.5yrs

The interest rates on deposit crept up in July, breaking a downtrend of two and a half years on the back of a rising private sector credit demand. The weighted average interest rate on deposits stood at 4.89% in July, up from 4.84% in June, according to data from the Bangladesh Bank. The interest rate had been on a descent since January 2015 -- when lenders provided 7.26% -- thanks to a slashing spree of state banks and the new ones.

Corporate Update:

MI Cement to provide material for development project MICEMENT [Mkt. Cap: BDT 14,597.55 mn; 5.02%]

MI Cement will provide the cement requirement for upcoming Dhaka-Khulna highway N-8 development project.

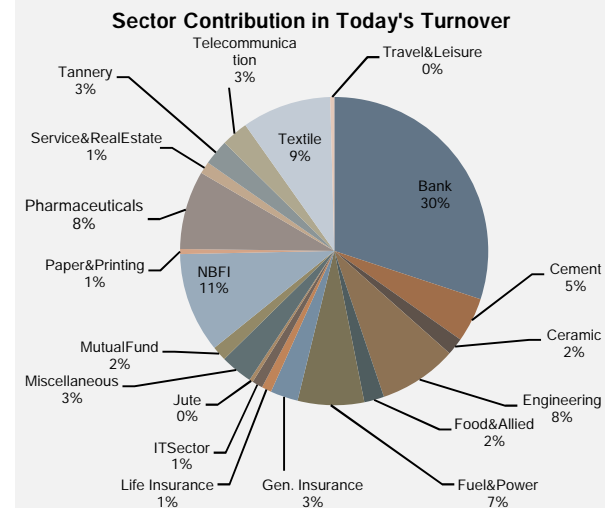
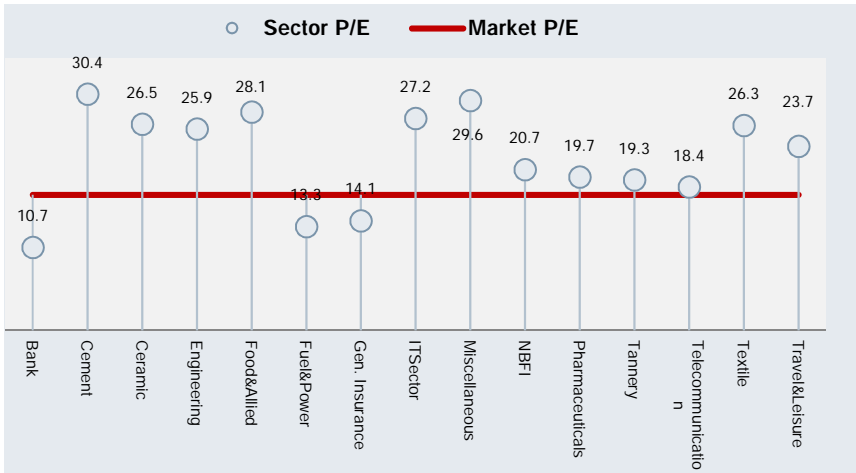
-Ahmed Irtiza

Daily Stock Market Report

Sunday, September 10, 2017

Sector Overview

Sector	No of Listed Co.	No of Trade	Trade Volume	% Change in volume	Turnover (BDT mn)	% Change in Turnover	Mkt Cap (BDT Mn)	% Change in Mkt Cap	Sector P/E (Trailing)
Bank	30	32939	170613497	21.1%	3641.1	17.0%	690495	0.10%	10.69
Cement	7	9215	8105278	196.7%	569.8	180.9%	135495	6.49%	30.39
Ceramic	5	5072	4619965	-21.6%	219.0	-10.9%	28618	0.81%	26.53
Engineering	34	21258	15108649	9.9%	994.9	11.1%	212489	-0.62%	25.89
Food&Allied	18	7093	5627002	2.6%	256.6	-2.3%	258887	-0.03%	28.06
Fuel&Power	18	10537	13624502	82.9%	840.0	60.7%	399178	0.15%	13.35
Gen. Insurance	35	8451	16359173	92.3%	354.3	94.0%	44757	0.81%	14.10
Life Insurance	12	3369	1975086	-15.0%	123.1	-5.1%	49985	0.54%	0.00
ITSector	7	3037	4388112	4.0%	136.3	2.8%	13722	-0.75%	27.24
Jute	3	1451	81118	-37.3%	46.7	-40.7%	1972	-1.73%	N/M
Miscellaneous	12	9651	9014807	11.8%	411.1	-4.5%	101468	-0.21%	29.57
MutualFund	35	2348	22470191	23.9%	184.0	30.0%	43565	-0.19%	1159.56
NBFI	23	13350	37658309	68.9%	1275.8	85.8%	253869	1.02%	20.69
Paper&Printing	2	1639	795539	-33.7%	61.7	-32.2%	2573	-0.32%	N/M
Pharmaceuticals	28	15176	16215377	41.6%	999.1	-0.8%	508176	0.90%	19.72
Service&RealEstate	4	3531	2973739	-21.7%	153.4	-25.8%	20792	-1.33%	20.29
Tannery	6	4719	5044822	39.1%	322.3	16.1%	29092	0.13%	19.35
Telecommunication	2	3159	1034837	25.7%	344.4	31.8%	598191	5.16%	18.44
Textile	48	23288	47766761	-13.5%	1132.9	-11.7%	125992	-0.15%	26.35
Travel&Leisure	4	1691	3367604	20.2%	52.1	-16.0%	25321	-0.46%	23.66



Money Market Summary

Special REPO	31-Jul-14	Rate
Special REPO bid received (BDT crore)	50.00	10.25%
Special REPO bid accepted (BDT crore)	30.00	10.25%
% of Special REPO bid accepted	60.0%	
ALS	31-May-15	Rate
Assured Liquidity	46.75	7.25%
Inter Bank REPO	7-Sep-17	
Inter Bank Repo (BDT Crore)	897.57	3.53%
Reverse REPO	19-Nov-15	Rate
Reverse REPO bid received (BDT crore)	7058.00	5.25%
Reverse REPO bid accepted (BDT crore)	2046.50	
% of Reverse REPO bid accepted	29.0%	
* Updated according to last auction held		
REPO	19-Dec-11*	
REPO bid to BB by Banks and NBFIs (BDT crore)	13,590.65	
REPO bid accepted by BB (BDT crore)	-	
% of REPO bid accepted	0.00%	

* Updated according to last auction held

Source: Bangladesh Bank

Commodity and Exchange Rate

Exchange rates in BDT

Currency	Buy	Sell
USD	80.70	80.70
GBP	104.30	104.32
EUR	95.88	95.91

Commodity Price

Commodity	10-Sep-17	7-Sep-17
Gold (USD/t oz.)	\$ 1,346.59	\$ 1,339.92
Brent Crude Oil (USD/bbl.)	\$ 53.78	\$ 54.57
Cotton (USD/lb.)	\$ 74.59	\$ 74.00
Sugar (USD/lb.)	\$ 14.09	\$ 14.28
Wheat(KCB) (USD/bu.)	\$ 437.75	\$ 444.50

Source: Bloomberg

Daily Stock Market Report

Sunday, September 10, 2017

Sectorwise Traded Scripts

Ticker	Close	High	Low	No of Trade	Volume	Turnover	VWAP** *	Changes in Turnover	% of total Sector Turnover	Price Return****		RSI*****	Market Cap.	Trailing PE
										1 Day	5 Day			
Bank														
	(BDTmn)													
ABBANK	22.7	23.3	22.6	1370	5171882	118.1	22.83	↓ -1%	3.24%	↓ -0.9%	↓ -1.7%	62.2	17210	15.95
ALARABANK	23.9	24.1	23.1	1494	10833488	256.8	23.69	↑ 75%	7.05%	↑ 0.4%	↑ 2.1%	74.2	23764	7.64
BANKASIA	22.0	22.3	21.7	473	2219808	48.8	21.94	↓ -16%	1.34%	↓ -0.5%	↑ 3.8%	66.4	21714	10.17
BRACBANK	85.2	86.7	84.9	391	351499	30.0	85.19	↓ -44%	0.82%	↓ -1.7%	↓ -0.7%	49.7	72864	16.67
CITYBANK	46.7	47.1	46.0	1638	4725287	220.3	46.62	↓ -25%	6.05%	↑ 1.1%	↑ 6.1%	74.7	40900	10.33
DHAKABANK	21.0	21.2	20.6	338	1604996	33.7	20.96	↓ -43%	0.92%	↑ 0.0%	↑ 5.0%	70.5	15168	11.54
DUTCHBANGL	136.8	137.8	136.1	295	104268	14.3	136.90	↓ -34%	0.39%	↑ 0.1%	↓ -0.7%	59.9	27360	13.29
EBL	45.5	46.0	44.8	349	746653	33.9	45.51	↓ 0%	0.93%	↑ 0.0%	↑ 1.1%	66.1	33579	12.05
XIMBANK	16.4	16.5	15.8	2131	15583748	253.1	16.26	↑ 33%	6.95%	↑ 2.5%	↑ 7.9%	78.1	23161	10.51
FIRSTSBANK	15.7	15.8	15.1	2268	14312669	221.8	15.49	↑ 159%	6.09%	↑ 4.0%	↑ 9.0%	80.2	11191	8.44
ICBIBANK	5.7	5.9	5.7	138	694271	4.0	5.75	↑ 18%	0.11%	↓ -1.7%	↑ 1.8%	52.9	3789	0.00
IFIC	20.4	20.7	20.3	2295	9648577	198.0	20.53	↑ 42%	5.44%	↓ -1.0%	↓ -1.0%	57.0	12882	8.00
ISLAMIBANK	34.6	35.5	34.2	960	2716535	94.7	34.87	↓ -32%	2.60%	↓ -1.4%	↑ 4.8%	57.0	55706	14.24
JAMUNABANK	23.0	23.4	22.9	257	1301413	30.1	23.09	↓ -49%	0.83%	↑ 0.0%	↑ 0.4%	71.8	14125	7.14
MERCANBANK	27.7	28.0	27.4	948	4792580	132.7	27.68	↓ -1%	3.64%	↑ 0.7%	↑ 5.3%	72.4	20475	7.47
MTB	29.5	29.8	29.3	123	449568	13.3	29.55	↑ 24%	0.36%	↑ 0.0%	↑ 3.9%	76.4	15035	11.49
NBL	13.9	14.2	13.7	3524	22879631	318.6	13.94	↑ 22%	8.75%	↑ 0.7%	↑ 7.8%	75.0	32949	7.36
NCCBANK	17.8	18.3	17.7	1075	5853319	105.1	17.97	↑ 61%	2.89%	↓ -0.6%	↑ 2.3%	68.8	15721	6.85
ONEBANKLTD	25.7	25.9	25.2	1034	7544815	193.0	25.58	↑ 40%	5.30%	↑ 2.0%	↑ 2.4%	65.5	18762	5.90
PRIMEBANK	27.5	28.0	27.4	443	2424261	66.8	27.54	↓ -44%	1.83%	↓ -1.1%	↑ 0.0%	68.3	28307	10.30
PREMIERBAN	17.1	17.4	16.1	2955	22086641	367.9	16.67	↑ 10%	10.10%	↑ 5.6%	↑ 17.9%	83.0	11897	5.81
PUBALIBANK	27.3	27.6	27.0	429	924347	25.3	27.32	↑ 6%	0.69%	↓ -0.4%	↓ -0.7%	55.4	25236	14.40
RUPALIBANK	52.7	55.9	51.3	978	605582	32.6	53.72	↑ 22%	0.89%	↓ -3.8%	↓ -5.2%	49.8	15275	0.00
SHAHJABANK	23.5	24.0	23.0	850	5528749	130.0	23.52	↓ -21%	3.57%	↑ 0.9%	↑ 4.9%	76.6	17265	9.48
SIBL	33.8	34.5	32.2	1247	4859879	162.3	33.40	↑ 16%	4.46%	↑ 0.6%	↑ 29.0%	92.0	24954	12.20
SOUTHEASTB	22.1	22.2	21.7	767	4791391	105.5	22.03	↑ 54%	2.90%	↑ 1.4%	↑ 5.2%	73.7	20265	8.74
STANDBANKL	15.2	15.3	14.6	953	5411497	81.6	15.08	↑ 69%	2.24%	↑ 2.7%	↑ 8.6%	81.2	12035	10.48
TRUSTBANK	37.4	37.9	36.8	454	2582711	96.5	37.35	↑ 62%	2.65%	↑ 0.0%	↑ 5.4%	77.7	20831	9.96
UCB	23.9	24.4	23.5	1995	7935273	190.1	23.98	↑ 180%	5.22%	↑ 2.6%	↑ 4.8%	71.0	25194	9.52
UTTARABANK	32.2	32.9	32.0	767	1928159	62.3	32.33	↑ 43%	1.71%	↓ -0.9%	↓ -1.2%	61.1	12883	8.39
Cement														
ARAMITCEM	46.1	47.7	43.9	1977	2026241	93.3	46.17	↑ 99%	16.38%	↑ 5.7%	↑ 17.0%	72.7	1562	53.39
CONFIDCEM	154.6	157.8	153.3	501	265524	41.3	155.45	↓ -5%	7.25%	↑ 1.4%	↓ -1.7%	49.2	6956	14.08
HEIDELCEM	434.1	437.0	432.7	511	82930	36.0	434.14	↑ 6%	6.32%	↑ 0.3%	↑ 1.3%	39.2	24528	21.59
LAFSURCEML	65.0	65.0	59.1	4676	4913718	312.7	63.68	↑ 332%	54.88%	↑ 10.0%	↑ 10.5%	70.0	75489	50.00
MEGHNACEM	118.7	120.3	114.0	657	329653	39.5	119.89	↑ 732%	6.93%	↑ 8.5%	↑ 15.0%	82.9	2671	80.75
MICEMENT	98.3	102.0	94.9	595	321457	31.5	97.91	↑ 5551%	5.52%	↑ 5.0%	↑ 4.9%	62.9	14598	20.52
PREMIERCEM	91.9	94.8	90.9	298	165755	15.5	93.40	↑ 1836%	2.72%	↑ 2.5%	↑ 3.1%	53.1	9691	17.78
Ceramic														
FUWANGCER	22.4	22.7	22.1	1321	2445354	54.8	22.43	↓ -36%	25.04%	↑ 0.4%	↓ -2.2%	58.6	2523	22.20
MONNOCERA	103.4	105.0	96.0	2054	734277	74.6	101.78	↑ 1%	34.06%	↑ 2.0%	↑ 14.5%	74.8	2474	0.00
RAKCEM	58.2	58.8	58.0	935	1123750	65.6	58.36	↑ 26%	29.95%	↑ 0.5%	↓ -0.7%	50.2	20585	20.58
SPCERAMICS	15.8	16.0	15.6	99	110812	1.8	15.85	↓ -39%	0.80%	↑ 1.3%	↓ -1.9%	51.3	2322	0.00
STANCERAM	110.6	111.8	103.1	663	205772	22.2	107.90	↓ -29%	10.14%	↑ 5.2%	↑ 13.7%	73.4	715	0.0
Engineering														
AFTABAUTO	69.4	69.9	68.8	242	213483	14.8	69.23	↓ -57%	1.49%	↑ 0.7%	↓ -0.7%	47.2	6644	21.89
ANWARGALV	91.8	92.8	89.6	895	356628	32.4	90.84	↓ -47%	3.26%	↑ 0.5%	↑ 6.0%	61.5	1212	102.00
APOLISPAT	20.8	21.2	20.8	776	2057568	43.1	24.72	↓ -2%	4.33%	↓ -1.0%	↓ -0.5%	48.8	7367	13.46
ATLASBANG	136.6	143.0	135.0	306	51878	7.2	138.21	↓ -51%	0.72%	↑ 2.0%	↑ 8.6%	51.5	3740	0.00
AZIZPIPES	120.8	126.0	120.0	94	14025	1.7	122.62	↑ 49%	0.17%	↓ -0.3%	↓ -0.1%	52.5	586	118.43
BBSCABLES	131.9	139.9	131.2	3209	946991	127.0	134.13	↑ 7%	12.77%	↓ -3.9%	↓ -9.5%	0.0	15828	258.12
BDAUTOCA	134.1	140.0	133.1	668	172956	23.5	135.90	↓ -8%	2.36%	↓ -0.1%	↑ 11.3%	67.8	503	262.19
BBS	50.1	51.6	50.0	2158	2153332	108.6	50.46	↑ 17%	10.92%	↓ -1.8%	↓ -6.2%	44.3	5841	18.92
BDLAMPS	180.8	184.2	180.1	313	46654	8.5	k6	↑ 50%	0.85%	↓ -1.4%	↓ 0.1%	46.4	1694	43.05
BDTHAI	26.7	27.6	26.4	857	1382740	37.3	27.00	↓ -4%	3.75%	↓ -2.6%	↑ 1.9%	49.6	2934	18.20
BENGALWTL	49.1	49.6	49.0	199	191987	9.4	49.08	↓ -34%	0.95%	↑ 0.0%	↓ -2.4%	46.3	4083	21.16
BSRMLTD	132.9	135.9	132.7	449	219068	29.3	133.79	-	2.95%	↑ 1.3%	↑ 2.0%	54.4	28521	37.68

■ Turnover greater than 10% of the sector ■ Turnover greater than 5% of the sector turnover ■ Turnover less than 5% of the sector turnover

Daily Stock Market Report

Sunday, September 10, 2017

Sectorwise Traded Scrips

Ticker	Close	High	Low	No of Trade	Volume	Turnover	VWAP***	Changes in Turnover	% of total Sector Turnover	Price Return****		RSI*****	Market Cap.	Trailing PE	
										1 Day	5 Day				
Engineering												(BDTmn)			
BSRMSTEEL	86.1	87.8	86.0	357.0	168604	14.6	86.34	-	1.46%	↓-1.1%	↓-1.1%	44.76	29427	13.71	
DESHBANDHU	20.4	21.6	20.2	214.0	254732	5.2	20.47	↓-31%	0.52%	↓-2%	↓-2.4%	48.25	1138	35.17	
ECABLES	151.2	156.5	149.1	197.0	46293	7.1	152.74	↓-51%	0.71%	↓-2.8%	↑4.8%	53.53	3629	126.00	
GOLDENSON	17.7	18.0	17.6	356.0	470470	8.4	17.75	↑117%	0.84%	↓-1%	↓-2.2%	40.26	3040	0.00	
GPHISPAT	42.6	42.8	42.4	229.0	299555	12.8	42.66	↑0%	1.28%	↑0.0%	↓-0.9%	45.02	13285	25.21	
IFADAUTOS	151.9	155.0	151.1	1360.0	1139559	173.5	42.66	↑91%	17.44%	↓-1%	↓-3.6%	45.32	23617	29.24	
KAY&QUE	133.3	139.7	125.0	409.0	45920	6.1	132.94	↑8%	0.61%	↓-4.0%	↓-16.1%	60.08	654	0.0	
KDSALTD	82.5	84.4	81.8	539.0	322377	26.8	83.09	↑9%	2.69%	↓-1%	↑1.4%	56.21	4719	37.18	
MONNOSTAF	875.0	949.0	866.0	141.0	3591	3.3	908.94	↓-38%	0.33%	↓-3.8%	↑5.3%	66.02	350	355.69	
NAVANACNG	72.7	73.4	72.2	291.0	192790	14.0	72.59	↓-71%	1.41%	↑1%	↓-2.3%	41.41	4982	21.20	
NPOLYMAR	110.9	114.5	109.5	784.0	301462	33.6	111.45	↓-59%	3.38%	↓-2.5%	↑6.2%	60.79	2266	43.52	
NLTUBES	118.7	123.6	118.2	1423.0	423923	50.8	119.88	↑69%	5.11%	↓-3%	↑0.6%	45.15	3105	0.00	
OAL	24.8	25.0	24.7	452.0	574843	14.3	24.81	↑46%	1.43%	↓-0.4%	↓-1.2%	41.20	3475	20.14	
QSMDRYCELL	97.5	98.2	95.0	1027.0	544321	52.6	96.62	↑532%	5.29%	↑3%	↑3.3%	65.67	4341	47.60	
RANFOUNDRY	136.2	140.9	135.3	697.0	192085	26.3	136.84	↓-17%	2.64%	↓-1.4%	↑4.5%	56.10	1362	34.48	
RENWICKJA	596.3	609.9	590.0	95.0	2605	1.6	599.12	↑53%	0.16%	↑0%	↑2.4%	53.05	1193	207.77	
RSRMSTEEL	78.4	79.9	77.8	660.0	364619	28.8	78.91	↑24%	2.89%	↑0.5%	↓-1.8%	43.37	6781	9.58	
SALAMCRST	36.2	36.6	36.0	209.0	199780	7.3	36.27	↓-1%	0.73%	↑1%	↑2.8%	54.99	3561	54.85	
SHURWID	17.0	17.6	16.8	467.0	920430	15.7	17.10	↑79%	1.58%	↓-0.6%	↑0.6%	61.40	887	340.00	
SINGERBD	192.0	193.0	191.4	423.0	126460	24.3	192.05	↑111%	2.44%	↓-1%	↓-1.4%	41.26	14725	24.30	
WMSHIPYARD	43.6	44.0	43.4	523.0	364192	16.0	43.81	↑17%	1.60%	↓-0.2%	↓-0.2%	60.72	5254	17.58	
YPL	26.9	27.1	26.8	239.0	342728	9.2	26.96	↑73%	0.93%	↑0%	↑0.4%	49.26	1746	25.46	
Financial Institution															
BAYLEASING	28.0	28.2	27.5	266.0	478717	13.4	27.91	↓-16%	1.05%	↑2.9%	↑0.7%	53.97	3665	30.77	
BDFINANCE	20.4	20.5	19.8	767.0	1786483	36.2	20.24	↑48%	2.83%	↑3.0%	↑2.0%	60.18	2824	15.75	
BIFC	11.2	11.3	11.1	69.0	79062	0.9	11.20	↓-19%	0.07%	↑0.0%	↑5.7%	55.51	1128	0.00	
DBH	124.9	131.0	124.0	261.0	154174	19.4	126.08	↑99%	1.52%	↑0.5%	↓-0.6%	61.08	15219	14.12	
FAREASTFIN	12.9	13.0	12.3	627.0	2180473	28.0	12.84	↑237%	2.20%	↑4.0%	↑4.9%	68.10	2116	0.00	
FASFIN	18.8	19.1	18.0	1857.0	8937595	166.3	18.61	↑129%	13.04%	↑4.4%	↑12.6%	71.56	2427	12.90	
FIRSTFIN	13.5	13.6	13.1	52.0	211787	2.8	13.45	↑306%	0.22%	↑3.1%	↑2.3%	50.44	1647	9.54	
GSPFINANCE	30.9	31.1	30.6	397.0	776620	23.9	30.83	↑47%	1.88%	↑1.6%	↑0.7%	57.31	3233	9.48	
ICB	179.6	181.7	178.9	357.0	81577	14.7	179.69	↑17%	1.15%	↑0.2%	↓-0.3%	43.03	113653	19.29	
IDLC	86.9	87.4	86.0	535.0	761971	66.0	86.55	↑30%	5.17%	↑0.7%	↑0.7%	78.08	32766	10.75	
ILFSL	19.7	20.0	18.8	1248.0	5597254	109.0	19.46	↑10%	8.54%	↑5.3%	↑11.3%	79.86	3539	0.00	
IPDC	47.4	47.7	47.0	227.0	347910	16.5	47.30	↑60%	1.29%	↑0.6%	↑0.6%	50.41	8617	27.43	
ISLAMICFIN	24.0	24.1	23.5	585.0	2035212	48.7	23.91	↑198%	3.82%	↑2.6%	↑2.1%	59.01	2903	10.00	
LANKABAFIN	63.9	64.5	61.9	3606.0	9763046	616.9	63.23	↑156%	48.35%	↑3.4%	↑5.3%	75.09	20336	16.04	
MIDASFIN	35.0	35.6	34.0	197.0	175606	6.1	34.86	↑9%	0.48%	↑3.6%	↑14.8%	74.77	4209	16.67	
NHFIL	52.8	52.9	51.5	193.0	109021	5.7	52.52	↑40%	0.45%	↑2.3%	↑1.1%	55.95	5617	23.57	
PHOENIXFIN	31.9	32.2	31.2	203.0	298721	9.5	31.68	↓-54%	0.74%	↑1.9%	↓-0.6%	61.51	3876	12.86	
PLFSL	12.9	13.0	12.8	182.0	399871	5.2	12.90	↑43%	0.40%	↑0.0%	↑0.8%	55.20	3682	645.00	
PREMIERLEA	18.7	18.8	18.1	534.0	1522468	28.1	18.46	↑140%	2.20%	↑2.7%	↑1.1%	59.28	2255	13.59	
PRIMEFIN	13.6	13.9	13.5	102.0	130439	1.8	13.63	↑77%	0.14%	↓-0.7%	↑0.7%	53.10	3712	0.00	
UNIONCAP	22.4	22.6	21.9	293.0	461119	10.2	22.20	↑3%	0.80%	↑2.3%	↑5.2%	55.93	3506	0.00	
UNITEDFIN	24.5	24.8	24.3	510.0	1084117	26.6	24.57	↓-25%	2.09%	↑0.8%	↓-2.8%	60.58	4158	15.22	
UTTARAFIN	70.1	71.0	68.9	282.0	285066	20.0	70.23	↑27%	1.57%	↑1.4%	↓-1.3%	56.72	8778	10.04	
Food & Allied															
AMCL(PRAN)	227.1	233.8	226.0	178.0	24132	5.5	228.83	↓-79%	2.15%	↓-1.1%	↑4.2%	60.37	1817	34.15	
APEXFOODS	170.9	175.5	170.0	772.0	231822	40.2	173.31	↓-30%	15.67%	↓-1.2%	↑11.3%	73.83	975	117.05	
BANGAS	142.2	143.8	141.6	62.0	7167	1.0	142.42	↓-57%	0.40%	↑0.1%	↑3.6%	57.87	898	0.00	
BATBC	2981.7	2990	2951	19.0	332	1.0	2983.93	↑32900%	0.39%	↑0.1%	↓-0.8%	53.05	178902	22.91	
BEACHHATCH	17.6	18.0	17.5	131.0	187402	3.3	17.69	↓-55%	1.29%	↓-1.7%	↑1.1%	48.20	729	0.00	
EMERALDOIL	25.3	26	25	328.0	426784	10.9	25.47	↑117%	4.24%	↓-0.4%	↓-0.4%	45.25	1511	0.00	
FINEFOODS	44.9	48.0	44.3	1308.0	913399	41.9	45.82	↑44%	16.32%	↓-5.1%	↓-7.8%	43.29	597	30.81	
FUWANGFOOD	22.6	23	23	1125.0	2006564	45.7	22.78	↓-8%	17.82%	↓-0.9%	↓-3.8%	42.84	2070	29.14	
GEMINISEA	661.3	668.7	640.0	989.0	40980	26.9	657.60	↑74%	10.49%	↑3.5%	↑7.5%	68.17	1091	32.53	
GHAIL	44.9	45	45	452.0	569195	25.6	44.90	↓-11%	9.96%	↑0.2%	↓-0.2%	48.55	4450	24.51	
MEGCONMILK	17.7	19.9	17.5	77.0	40973	0.7	18.09	↓-45%	0.29%	↓-4.3%	↑0.0%	61.25	283	0.00	
MEGHNAPEP	13.2	14	13	91.0	60043	0.8	13.52	↓-47%	0.32%	↓-3.6%	↑12.8%	64.54	158	0.00	
NTC	585.0	594.5	583.0	482.0	20027	11.8	13.52	↑281%	4.61%	↓-0.7%	↑0.4%	49.78	3861	0.00	
OLYMPIC	283.5	284.4	282.1	204.0	64,298	18.2	283.8	↑6%	7.11%	↑0.0%	↑3.6%	57.55	56683	32.92	

Daily Stock Market Report

Sunday, September 10, 2017

Sectorwise Traded Scrips

Ticker	Close	High	Low	No of Trade	Volume	Turnover	VWAP***	Changes in Turnover	% of total Sector Turnover	Price Return****		RSI****	Market Cap.	Trailing PE	
										1 Day	5 Day				
Food & Allied															
												(BDTmn)			
RAHIMAFOOD	158.9	165.0	158.0	62.0	8,578.0	1	160	↓ -34%	0.53%	↓ -2.0%	↓ -4.0%	46.76	3178	0.00	
RDFOOD	19.5	19.9	19.4	634.0	970,894	19	20	↑ 49%	7.42%	↓ -0.5%	↓ -3%	42.93	1165	33.37	
SHYAMPUSUG	28.7	30.7	28.4	63.0	25,320.0	1	29	↓ -9%	0.29%	↓ -6.5%	↑ 2.9%	57.23	144	0.00	
ZEALBANGLA	62.6	64.8	59.0	116.0	29,092.0	2	62	↑ 2%	0.71%	↓ -4.3%	↑ 12.0%	71.54	376	0.00	
Fuel & Power															
												(BDTmn)			
BARKAPOWERR	42.5	43.3	42.4	703.0	834,167	35.6	42.64	↑ 29%	4.24%	↓ -0.2%	↓ 0%	41.62	7393	16.05	
BDWELDING	19.2	19.7	18.9	178.0	227,405.0	4.4	19.26	↓ -4%	0.52%	↓ -3.5%	↑ 1.6%	53.81	824	0.00	
CVOPRL	221.4	229.9	220.2	726.0	69,841.0	15.6	222.96	↓ -16%	1.85%	↓ -2.3%	↓ 0%	41.98	5480	0.00	
LINDEBD	1,240	1,245.0	1,226.0	128.0	7,821.0	9.7	1239.34	↑ 325%	1.15%	↑ 0.1%	↓ -0.2%	43.82	18863	22.83	
DESCO	48.3	48.8	48.2	461.0	391,665.0	19.0	48.45	↓ -19%	2.26%	↑ 0.2%	↑ 1%	45.73	19203	51.38	
DOREENPWR	133.3	134.7	132.0	760.0	355,566	47.6	133.75	↓ -15%	5.66%	↑ 0.5%	↓ -3.3%	35.20	12797	23.12	
EASTRN LUB	979.6	987.2	978.3	89.0	2,034.0	2.0	983.93	↑ 147%	0.24%	↑ 0.2%	↓ 0%	34.48	974	34.64	
GBBPOWER	22.1	22.4	22.0	420.0	700,712	15.5	22.16	↑ 165%	1.85%	↓ -0.9%	↓ -1.8%	37.64	2143	14.0	
JAMUNAOIL	212.7	213.4	211.1	433.0	238,102.0	50.7	213.03	↑ 112%	6.04%	↑ 0.3%	↑ 1%	60.61	23487	9.69	
KPCL	64.0	64.9	63.6	975.0	1,417,964.0	90.9	64.09	↑ 18%	10.82%	↓ -0.2%	↑ 1.9%	71.06	23122	22.86	
MJLBD	122.7	124.1	122.3	1,027.0	886,273	109.2	123.09	↑ 64%	13.00%	↓ -0.2%	↓ 0%	56.66	37015	17.32	
MPETROLEUM	202.0	202.9	201.6	171.0	81,202.0	16.4	202.00	↓ -10%	1.95%	↓ -0.1%	↓ -0.5%	55.43	21860	10.62	
PADMAOIL	252.3	253.5	249.2	338.0	94,656.0	23.9	252.25	↑ 36%	2.84%	↓ -0.5%	↑ 0%	52.62	24784	13.34	
POWERGRID	54.1	54.2	53.0	292.0	288,492.0	15.6	54.01	↓ -33%	1.85%	↑ 2.3%	↑ 0.2%	56.03	24935	17.40	
SPCL	143.4	144.9	143.3	429.0	190,489.0	27.3	143.54	↑ 11%	3.25%	↓ -0.1%	↓ -1%	39.34	20255	16.20	
SUMITPOWER	42.1	43.9	41.9	2,508.0	7,045,836	298.3	42.35	↑ 263%	35.52%	↑ 0.5%	↑ 0.7%	61.79	44958	12.53	
TITASGAS	49.3	49.6	49.0	509.0	634,485	31.3	49.27	↑ 2%	3.72%	↑ 0.4%	↑ 0%	42.32	48769	6.26	
UPGDCL	171.7	173.0	171.3	390.0	157,792.0	27.1	172.02	↑ 37%	3.23%	↓ -0.2%	↓ -1.4%	39.94	62318	15.04	
Insurance															
AGRANINS	22.7	22.7	22.2	134.0	178,907.0	4.0	22.47	↑ 92%	1.13%	↑ 4.6%	↑ 11.3%	69.22	623	13.12	
ASIAINS	24.9	25.0	24.0	157.0	227,149.0	5.6	24.72	↑ 114%	1.58%	↑ 3.8%	↑ 3.3%	62.58	1172	13.76	
ASIAPACINS	24.0	25.4	24.0	6.0	1,510.0	0.0	24.01	↓ -99%	0.01%	↓ -4.0%	↑ 3.9%	53.48	1016	19.05	
BGIC	21.1	21.1	20.7	224.0	285,163.0	6.0	20.97	↑ 58%	1.69%	↑ 2.9%	↑ 7.7%	70.90	1140	20.49	
BNICL	19.9	20.3	19.5	485.0	811,338	16.1	19.85	↑ 183%	4.54%	↑ 3.1%	↑ 8.2%	70.42	881	14.53	
CENTRALINS	23.6	23.7	22.7	19.0	30,805.0	0.7	23.61	↑ 642%	0.21%	↑ 0.9%	↑ 5.8%	61.09	1111	13.89	
CITYGENINS	20.5	20.7	19.2	1,063.0	3,126,173	63.2	20.21	↑ 74%	17.83%	↑ 7.9%	↑ 16.5%	81.55	1270	12.65	
CONTININS	24.0	24.3	23.0	236.0	360,496.0	8.6	23.89	↓ -18%	2.43%	↑ 3.4%	↑ 5.7%	69.54	790	16.55	
DHAKAINS	24.2	24.9	24.0	86.0	80,052.0	1.9	24.32	↓ -49%	0.55%	↑ 0.4%	↑ 7.6%	66.88	971	14.24	
EASTERNINS	31.4	32.0	30.8	35.0	29,456.0	0.9	31.64	↓ -82%	0.26%	↑ 0.6%	↑ 7.9%	70.90	1354	9.35	
EASTLAND	24.8	25.2	23.0	224.0	298,826.0	7.4	24.90	↑ 29%	2.10%	↑ 4.0%	↑ 6.4%	66.06	1704	10.67	
FEDERALINS	13.9	13.9	13.3	616.0	1,434,650.0	19.7	13.73	↑ 236%	5.56%	↑ 4.5%	↑ 9.4%	70.17	869	25.97	
GLOBALINS	17.6	17.8	17.1	242.0	293,542.0	5.2	17.60	↑ 162%	1.46%	↑ 2.9%	↑ 11.4%	70.24	617	55.60	
GREENDELT	68.4	68.7	66.4	63.0	32,545.0	2.2	68.62	↑ 39%	0.63%	↓ -0.4%	↑ 3.3%	69.71	5519	20.85	
ISLAMIINS	31.4	31.9	30.9	118.0	53,602.0	1.7	31.63	↓ -65%	0.48%	↓ -0.9%	↓ -3.1%	54.52	1066	21.64	
JANATAINS	14.8	15.0	14.6	50.0	53,003.0	0.8	14.81	↑ 8%	0.22%	↓ -1.3%	↑ 0.7%	60.53	568	24.67	
KARNAPHULI	19.3	20.0	18.4	348.0	510,346.0	9.9	19.47	↑ 123%	2.80%	↑ 2.7%	↑ 7.8%	67.71	786	13.99	
MERCINS	23.9	24.6	23.3	579.0	1,290,004.0	31.1	24.08	↑ 62%	8.77%	↑ 3.0%	↑ 15.5%	76.30	1030	17.32	
NITOLINS	31.8	32.3	31.2	306.0	1,044,940.0	33.4	31.96	↑ 318%	9.41%	↑ 2.9%	↑ 15.6%	88.81	1122	11.08	
NORTHRINS	27.2	27.3	26.7	142.0	178,096.0	4.8	27.11	↑ 148%	1.36%	↑ 1.9%	↑ 8.8%	74.96	1160	18.35	
PARAMOUNT	18.6	19.0	18.2	209.0	342,167	6.4	18.73	↑ 42%	1.81%	↑ 1.1%	↑ 5.1%	61.07	535	17.15	
PEOPLESINS	22.5	23.0	22.2	100.0	77,961.0	1.8	22.61	↑ 95%	0.50%	↑ 0.0%	↑ 7.1%	63.24	1040	8.93	
PHENIXINS	30.7	31.9	30.1	62.0	43,623.0	1.3	31.05	↑ 104%	0.38%	↑ 1.7%	↑ 5.5%	71.60	1238	12.74	
PIONERINS	32.6	32.9	32.3	163.0	182,639.0	6.0	32.70	↑ 164%	1.69%	↓ -1.2%	↑ 7.2%	72.06	2281	13.58	
PRAGATIINS	33.3	33.9	32.9	104.0	450,419.0	14.9	33.02	↑ 1386%	4.20%	↑ 0.3%	↑ 5.7%	66.33	1944	12.14	
PRIMEINSUR	21.1	21.5	20.5	208.0	283,092.0	5.9	20.99	↑ 300%	1.68%	↑ 3.4%	↑ 9.3%	73.20	863	11.53	
PROVATIINS	21.0	21.2	19.8	696.0	1,764,211.0	36.5	20.72	↑ 688%	10.31%	↑ 7.1%	↑ 11.1%	75.96	624	12.34	
PURABIGEN	18.5	18.7	18.0	780.0	1,733,350	32.0	18.46	↑ 121%	9.03%	↑ 2.8%	↑ 9.5%	66.10	914	11.80	
RELIANCINS	56.0	56.0	56.0	1.0	9.0	0.0	56.00	↓ -100%	0.00%	↓ -5.2%	↑ 0.7%	57.24	4425	11.94	
REPUBLIC	26.4	26.8	25.8	99.0	73,886.0	2.0	26.43	↑ 191%	0.55%	↑ 1.9%	↑ 8.2%	60.57	925	15.73	
RUPALIINS	21.4	21.7	21.1	342.0	480,323.0	10.3	21.51	↑ 61%	2.92%	↑ 1.9%	↑ 8.6%	73.38	1420	11.72	
SONARBAINS	18.9	19.2	18.4	156.0	302,509.0	5.7	18.90	↓ -15%	1.61%	↑ 2.7%	↑ 10.5%	75.12	649	11.79	
STANDARINS	26.1	26.2	25.5	59.0	51,308.0	1.3	26.06	↓ -45%	0.38%	↑ 1.2%	↑ 7.0%	66.91	849	19.15	
TAKAFULINS	27.0	27.6	25.5	329.0	248,416.0	6.7	27.18	↑ 43%	1.90%	↑ 5.5%	↑ 12.5%	76.85	1023	17.35	
UNITEDINS	30.0	30.5	29.3	10.0	4,657.0	0.1	29.95	↓ -36%	0.04%	↑ 3.1%	↑ 4.9%	60.25	1260	10.14	

Daily Stock Market Report

Sunday, September 10, 2017

SECURITIES

Ticker	Close	High	Low	No of Trade	Volume	Turnover	VWAP**	Changes in Turnover	% of total Sector Turnover	Price Return****		RSJ*****	Market Cap.	Trailing PE
										1 Day	5 Day			
Life Insurance (BDTmn)														
DELTALIFE	106.4	110.0	105.0	893	344086	37.3	108.4	↓ -2%	30.27%	↓ -1%	↑ 4.3%	70.83	13167	0.00
FAREASTLIF	81.2	82.2	80.8	417	240927	19.7	81.8	↑ 114%	16.00%	↑ 1%	↑ 4.8%	73.23	5058	0.00
MEGHNALIFE	58.5	59.0	56.8	272	200127	11.7	58.6	↑ 190%	9.51%	↑ 3.2%	↑ 7.3%	76.93	1961	0.00
NATLIFEINS	163.9	164.5	162.9	164	32086	5.2	163.6	↑ 10%	4.26%	↑ 1%	↑ 4.3%	73.66	15467	0.00
PADMALIFE	47.3	48.0	46.6	50	59798	2.8	47.4	↑ 89%	2.31%	↓ -1%	↑ 1.3%	55.01	1533	0.00
POPULARLIF	69.6	71.2	68.6	239	118652	8.4	70.5	↓ -60%	6.79%	↓ -0.9%	↑ 5.5%	65.21	4206	0.00
PRAGATILIF	112.0	113.5	109.5	98	12931	1.4	111.1	↓ -37%	1.17%	↑ 2.9%	↑ 9.7%	72.92	1162	0.00
PRIMELIFE	56.9	58.0	56.0	285	131644	7.5	57.2	↑ 22%	6.11%	↑ 2%	↑ 6.4%	63.90	1737	0.00
PROGRESLIF	57.7	58.0	57.0	13	2136	0.1	57.7	↑ 156%	0.10%	↓ -0.5%	↑ 0.3%	42.15	742	0.00
RUPALILIFE	42.9	43.4	42.3	232	167898	7.2	43.0	↓ -30%	5.86%	↑ 1.4%	↑ 10.9%	71.01	1190	0.00
SANDHANINS	32.5	33.5	31.5	678	643843	21.2	33.0	↓ -33%	17.23%	↓ -0.3%	↑ 8.3%	47.67	2971	0.00
SUNLIFEINS	22.6	22.9	22.3	28	20958	0.5	22.5	↓ -51%	0.38%	↑ 3%	↓ -1.3%	45.73	792	0.00
IT Sector (BDTmn)														
AAMRATECH	38.0	38.7	37.8	314	201655	7.7	38.3	↓ -34%	5.66%	↓ -1%	↓ -1.3%	42.14	2104	21.84
AGNISYSL	27.1	27.5	27.0	638	1258424	34.2	27.2	↓ -6%	25.12%	↓ -1.1%	↓ -1.5%	43.53	1783	23.36
BDCOM	42.7	43.1	42.0	502	757643	32.3	42.6	↑ 37%	23.68%	↓ -0.9%	↓ -6.8%	43.59	1892	26.97
DAFODILCOM	47.4	48.2	47.3	344	408320	19.4	47.6	↓ -16%	14.26%	↓ -1%	↓ -3.1%	40.59	2366	22.90
INTECH	22.3	23.8	22.0	953	1590461	36.0	22.7	↑ 13%	26.42%	↓ -3%	↓ -0.4%	58.83	520	13.67
ISNLTD	26.0	26.2	24.3	84	70828	1.8	25.4	↓ -40%	1.32%	↑ 3.6%	↑ 18.2%	66.19	284	0.00
ITC	47.7	48.0	47.5	202	100781	4.8	47.7	↑ 72%	3.53%	↑ 0%	↑ 0.4%	48.72	4772	39.29
Miscellaneous														
ARAMIT	379.9	386.5	375.3	200	18651	7.1	382.4	↑ 59%	1.73%	↓ -0.4%	↓ -0.3%	45.96	2279	41.64
AMANFEED	76.6	77.6	76.0	392	164737	12.7	76.8	↑ 1%	3.08%	↑ 0.9%	↑ 1.1%	50.25	8089	16.87
BERGERPBL	2090	2110.0	2090.0	7	225	0.5	2090.4	↑ 26%	0.11%	↑ 0.0%	↑ 0.7%	49.28	48474	28.03
BEXIMCO	31.7	32.0	31.5	1631	3231377	102.5	31.7	↑ 62%	24.93%	↓ -0.3%	↓ -0.3%	38.02	25197	26.55
BSC	51.6	53.2	51.5	1477	916058	47.8	52.2	↓ -43%	11.63%	↓ -2.3%	↑ 2.4%	35.03	7871	102.83
GOBALLPEN	104.9	108.7	104.4	578	141313	14.9	105.5	↓ -6%	3.63%	↓ -2.2%	↑ 0.1%	50.69	937	52.71
KBPPWBIL	22.7	23.1	22.5	399	540957	12.3	11.5	↑ 6%	3.00%	↑ 0.0%	↓ -0.4%	39.62	2024	25.79
MIRACLEIND	66.2	66.6	59.6	3048	2461593	153.1	62.2	↓ -10%	37.23%	↑ 7.6%	↑ 27.3%	82.48	1940	50.31
NFML	24.7	25.0	24.3	640	1185716	29.4	62.2	↓ 232%	7.14%	↑ 1.6%	↑ 0.8%	48.11	1812	24.49
SAVAREFR	87.1	92.2	85.4	43	1935	0.2	88.2	↓ -40%	0.04%	↓ -7.5%	↓ -9.9%	50.68	121	0.00
SINOBANGLA	62.4	65.5	61.8	317	146115	9.2	62.9	↑ 42%	2.23%	↓ -3.4%	↓ -3.3%	52.74	1248	39.49
USMANIAGL	102.6	109.5	100.2	919	206130	21.5	104.4	↓ -59%	5.23%	↓ -5.5%	↑ 9.1%	61.25	1476	0.00
Pharmaceuticals & Chemicals														
ACI	580.4	585.0	576.4	717	138405	80.5	581.4	↓ -26%	8.05%	↓ -0.3%	↑ 3.7%	80.70	25433	7.40
ACIFORMULA	203.1	206.0	202.9	545	139435	28.4	203.6	↑ 51%	2.84%	↓ -1.2%	↓ -1.4%	44.47	9140	26.45
ACMELAB	117.9	118.5	117.3	847	495657	58.3	117.7	↑ 43%	5.84%	↓ -0.2%	↓ -0.9%	45.81	24948	13.79
ACTIVEFINE	48.0	48.5	47.9	505	697281	33.6	48.2	↑ 49.29%	3.36%	↓ -0.4%	↓ -1.2%	40.62	7678	16.99
AFCAGRO	57.5	58.1	57.3	260	171179	9.9	57.7	↓ -56%	0.99%	↓ -0.2%	↓ -1.4%	34.64	4364	20.21
AMBEEPHA	457.6	461.8	445.2	188	9794	4.4	453.8	↑ 79%	0.44%	↑ 0.7%	↑ 1.8%	55.89	1098	502.86
BEACONPHAR	22.2	22.5	22.2	428	602335	13.4	22.3	↓ 0%	1.34%	↓ -0.4%	↓ -1.3%	37.84	5128	56.92
BXPBARMA	106.9	107.9	106.5	390	510849	54.7	107.0	↓ -43%	5.47%	↓ -0.7%	↓ -1.4%	43.00	43354	13.14
BXSYNTH	9.0	9.3	8.9	73	94887	0.9	9.1	↓ -62%	0.09%	↓ -3.2%	↑ 3.4%	53.95	780	0.00
CENTRALPHL	27.7	28.2	27.6	654	947737	26.4	27.9	↑ 14%	2.65%	↓ -1.4%	↑ 0.0%	44.58	2873	21.63
FARCHEM	25.1	25.3	24.9	594	1228127	30.8	81.8	↑ 61%	3.09%	↓ -0.4%	↓ -0.4%	43.53	4113	11.93
GHCL	43.2	43.9	42.9	161	101345	4.4	43.1	↓ -38%	0.44%	↓ -1.4%	↑ 0.7%	58.12	3110	70.82
GLAXOSMITH	1440.9	1445.0	1440.3	34	450	0.6	1440.8	↑ 60%	0.06%	↓ -0.1%	↓ -0.3%	39.97	17358	23.03
IBNSINA	258.8	260.9	257.6	339	47497	12.3	259.4	↓ -7%	1.23%	↑ 0.8%	↓ -1.1%	50.35	6712	54.15
IMABUTTON	23.4	24.8	22.9	73	33813	0.8	23.3	↓ -45%	0.08%	↓ -2.5%	↓ -5.6%	56.96	180	0.00
JMISMDL	210.2	221.3	208.1	827	189455	40.6	214.1	↓ -40%	4.06%	↓ -3.0%	↑ 4.5%	55.56	2312	32.69
KEYACOSMET	15.1	15.5	15.0	1891	7326683	111.7	15.3	↑ 181%	11.18%	↑ 2.0%	↑ 0.0%	42.50	12610	9.06
KOHINOOR	396.0	407.0	394.5	274	13975	5.6	396.2	↓ -24%	0.56%	↓ -0.9%	↓ -4.3%	32.92	4826	32.84
LIBRAINFU	636.1	659.8	605.0	487	23436	14.7	628.9	↓ -30%	1.47%	↑ 2.9%	↑ 10.7%	67.61	796	163.52
MARICO	1050.0	1058.8	1041.5	78	3252	3.4	1049.8	↑ 46%	0.34%	↓ -0.7%	↑ 2.1%	63.47	33075	22.97
ORIONINFU	65.3	67.9	64.9	821	557422	36.7	65.8	↓ -40%	3.67%	↓ -1.8%	↑ 3.8%	62.43	1329	14.51
ORIONPHARM	49.9	50.0	49.5	447	512787	25.5	49.8	↑ 58%	2.55%	↑ 0.4%	↑ 2.3%	59.87	11677	13.31
PHARMAID	291.8	305.0	286.1	503	50449	15.1	298.2	↑ 14%	1.51%	↓ -1.8%	↑ 3.0%	52.15	910	32.53
RECKITBEN	1477.1	1478.0	1477.0	7	117	0.2	1477.0	↑ 17200%	0.02%	↑ 0.3%	↓ -0.5%	41.92	6979	23.35
RENATA	1142.9	1144.8	1138.0	37	1194	1.4	1141.0	↓ -67%	0.14%	↑ 0.2%	↑ 0.2%	55.75	69599	29.51
SALVOCHEM	23.7	24.4	23.5	622	1091611	26.1	23.9	↑ 45%	2.61%	↓ -2.5%	↓ -3.3%	41.64	1398	29.64
SOURPHARMA	298.7	300.8	291.8	3143	1186928	351.9	296.5	↓ 0%	35.22%	↑ 2.6%	↑ 4.4%	78.30	204892	25.27
WATACHEM	173.0	177.7	172.1	231	39277	6.8	174.0	↓ -45%	0.68%	↓ -1.9%	↑ 1.1%	54.17	1503	41.89

Daily Stock Market Report

Sunday, September 10, 2017

Sectorwise Traded Scrips

Ticker	Close	High	Low	No of Trade	Volume	Turnover	VWAP* **	Changes in Turnover	% of total Sector Turnover	Price Return****		RSI*****	Market Cap.	Trailing PE	
										1 Day	5 Day				
Service & RealEstate															
												(BDTmn)			
EHL	50.9	53	50	621	685,848	35.2	51.4	↓ -58%	22.96%	↓ -1.5%	↑ 4.9%	64.06	4751.3	22.68	
SAIFPOWER	46.3	47.0	46.2	1,032	1,327,496	61.7	46.51	↑ 20%	40.24%	↓ -0.6%	↓ -1.3%	45.52	5384.5	8.58	
SAMORITA	98.5	104	97	966	304,191	30.2	99.1	↓ -36%	19.65%	↓ -3.4%	↑ 5.3%	64.13	1609.7	44.75	
SAPORTL	39.9	41.0	39.8	912	656,204	26.3	40.07	↑ 14%	17.15%	↓ -1.2%	↓ -3.4%	37.02	9046.4	59.55	
Tannery															
APEXFOOT	368.7	374	366	365	57,177	21.1	369.7	↓ -61%	6.56%	↓ -0.1%	↑ 3.9%	73.66	4147.9	29.15	
APEXTANRY	0	0	0	0	0	0	0.00	↓ -100%	0.00%	↑ 0.0%	↑ 1.2%	56.58	2432.30	54.10	
BATASHOE	1,151	1,155	1,146	84	3,247	3.7	1,152	↓ -34%	1.16%	↓ 0.5%	↓ -0.1%	45.21	15745.7	14.9	
FORTUNE	59.3	61.0	58.8	3,830	4,845,067	291.3	60.11	↑ 54%	90.36%	↓ -0.5%	↓ -1.2%	56.90	5752.1	22.13	
LEGACYFOOT	43	45	42	361	124,286	5.4	43	↓ -11%	1.66%	↓ -4.6%	↑ 6.2%	66.84	445.6	279.9	
SAMATALETH	55.1	55.9	54.5	79	15,045	0.8	54.90	↓ -56%	0.26%	↑ 2.6%	↓ -13.1%	53.41	568.63	0.00	
Telecommunication															
GP	428.4	435.0	405	2,265	734,390	307.9	419.6	↑ 33%	89.40%	↑ 5.4%	↑ 10.0%	89.74	578469	18.01	
BSCCL	119.6	124.9	119.4	894	300,447	36.5	121.5	↑ 22%	10.60%	↓ -0.5%	↑ 1.6%	54.82	19723	61.97	
Travel & Leisure															
BDSERVICE	0	0	0	0	0	0	0.00	-	0.00%	↑ 0.0%	↑ 0.0%	0.00	1770.5	9.68	
PENINSULA	30.4	31.2	30.3	517	696,783	21.3	30.56	↓ -3%	40.89%	↓ -1.3%	↓ -0.3%	50.63	3607.5	63.33	
UNITEDAIR	6.4	0	0	762	2,376,756	15.2	6.42	↑ 54%	29.24%	↓ -1.5%	↓ -3.0%	#N/A	4398.7	#N/A	
UNIQUEHRL	52.8	0	0	412	294,065	15.6	52.92	↓ -48%	29.87%	↑ 0.0%	↓ -1.7%	37.45	15544.3	18.14	
Jute															
JUTESPINN	87.1	87.2	87.0	4	175	0.0	87.00	↓ -90%	0.03%	↓ -2.6%	↓ -10.3%	44.99	148.1	0.00	
NORTHERN	666.9	696.7	660.0	1,252	62,810	42.5	675.97	↓ -43%	90.86%	↓ -1.9%	↑ 4.2%	60.79	1190.4	666.90	
SONALIANSH	233.6	237.0	233.1	195	18,133	4.3	234.78	↓ -4%	9.11%	↓ -1.1%	↓ -1.9%	45.82	633.5	124.26	
Textile															
AL-HAJTEX	115.6	120.8	115.1	1,241	353,814	41.5	117.28	↓ -42%	3.51%	↓ -2.6%	↓ -0.5%	54.66	2130	66.09	
ALLTEX	13.2	13.4	13.1	60	75,322	1.0	13.18	↓ -44%	0.08%	↑ 0.0%	↓ -2.9%	43.42	739	0.00	
ANLIMAYARN	40.0	42.2	39.5	722	564,792	23.1	40.83	↓ -60%	1.95%	↓ -3.6%	↑ 2.6%	62.62	715	37.74	
APEXSPINN	147.4	158.6	145.6	376	94,807	14.4	151.76	↓ -24%	1.22%	↓ -4.5%	↑ 14.6%	65.08	1238	41.97	
ARGONDENIM	35.8	36.3	35.6	523	1,233,658	44.3	35.94	↓ -14%	3.75%	↓ -0.6%	↓ -0.8%	50.02	4091	13.72	
CMCKAMAL	27.1	27.4	26.6	1,660	4,817,973	130.4	27.05	↑ 124%	11.02%	↑ 1.9%	↑ 4.6%	63.55	2965	17.73	
CNATEX	13.2	13.5	12.9	1,222	7,986,974	104.8	13.12	↓ -51%	8.86%	↑ 0.8%	↑ 0.0%	52.62	3159	22.90	
DACCADYE	9.5	9.8	9.5	99	118,563	1.1	9.57	↓ -12%	0.10%	↓ -1.0%	↓ -4.0%	44.00	828	0.00	
DELTA SPINN	11.5	11.7	11.5	410	969,600	11.2	11.53	↓ -21%	0.95%	↓ -0.9%	↓ -0.9%	42.55	1740	37.87	
DSHGARME	342.5	349.5	337.1	244	15,594	5.4	345.15	↑ 43%	0.46%	↓ -1.0%	↓ -0.2%	47.81	1801	38.59	
DSSL	21.4	21.8	21.3	435	722,361	15.6	21.55	↑ 61%	1.32%	↓ -1.4%	↓ -4.0%	34.87	2461	16.26	
DULAMIACOT	19.6	21.1	19.6	101	54,144	1.1	19.84	↓ -48%	0.09%	↓ -9.7%	↑ 7.1%	61.56	148	0.00	
ENVOYTEX	39.4	39.8	39.2	88	57,099	2.3	39.43	↓ -84%	0.19%	↓ -0.5%	↓ -2.0%	51.89	6171	23.03	
ETL	21.6	21.9	21.6	371	792,682	17.2	21.70	↓ -23%	1.45%	↓ -0.5%	↓ -1.8%	39.50	3110	17.28	
FAMILYTEX	9.1	9.2	9.0	987	2,963,610	26.9	9.07	↑ 55%	2.27%	↑ 0.0%	↓ -1.1%	45.84	2784	0.00	
FEKDIL	25.0	25.4	25.0	255	664,505	16.7	25.09	↑ 93%	1.41%	↓ -0.8%	↓ -2.7%	42.90	4036	14.91	
GENNEXT	11.1	11.3	11.0	840	4,532,022	50.3	11.12	↓ -11%	4.26%	↑ 0.0%	↓ -0.9%	45.22	4541	23.62	
HFL	25.0	25.4	24.9	254	263,816	6.6	25.00	↓ -24%	0.56%	↓ -0.4%	↓ -2.3%	41.77	2276	24.75	
HRTEX	41.1	43.1	40.7	721	807,315	33.9	41.92	↓ -53%	2.87%	↓ -2.8%	↑ 4.1%	59.41	1040	21.08	
HWAWELLTEX	41.4	42.3	41.1	187	117,477	4.9	41.69	↓ -39%	0.41%	↓ -0.7%	↓ -0.7%	58.98	2318	20.91	
MAKSONSPIN	11.8	11.9	11.7	191	522,959	6.2	11.79	↑ 76%	0.52%	↑ 1.7%	↑ 0.9%	57.11	2677	27.44	
MALEKSPIN	23.4	24.4	22.8	333	492,588	11.7	23.68	↑ 354%	0.99%	↑ 3.1%	↑ 2.2%	55.96	4530	21.08	
MATINSPINN	40.5	41.0	40.3	85	84,074	3.4	40.53	↑ 10%	0.29%	↓ -0.2%	↓ -3.6%	45.88	3948	9.91	
METROSPIN	8.9	9.0	8.8	56	124,419	1.1	8.90	↓ -17%	0.09%	↑ 0.0%	↓ -1.1%	52.13	538	0.00	
MHSML	27.8	28.4	27.6	417	538,477	15.0	27.84	↓ -3%	1.27%	↓ -0.4%	↓ -2.8%	37.53	2497	15.03	
MITHUNKNIT	54.0	56.1	53.0	3,299	3,170,462	173.6	54.74	↑ 18%	14.68%	↑ 5.9%	↑ 21.3%	77.90	1755	24.54	
MODERNDYE	269.2	275.0	252.0	23	810	0.2	270.55	↑ 606%	0.02%	↑ 2.9%	↑ 2.6%	59.18	368	90.6	
NURANI	21.7	22.3	21.5	1,135	2,189,788	47.8	21.83	↑ 43%	4.04%	↓ -2.3%	↓ -4.8%	36.64	1801	38.07	
PDL	23.5	23.8	23.4	465	458,590	10.8	23.55	↑ 22%	0.91%	↓ -0.4%	↓ -2.1%	39.26	2656	16.21	
PRIMETEX	32.4	33.6	32.2	429	521,636	17.0	32.64	↓ -78%	1.44%	↓ -0.6%	↓ -0.9%	63.26	1238	29.72	
PTL	34.8	35.6	34.6	319	664,184	23.4	35.18	↓ -23%	1.98%	↓ -2.0%	↓ -3.3%	49.35	4083	21.47	
RAHIMTEXT	328.6	334.0	321.1	182	8,010	2.6	330.38	↑ 122%	0.22%	↓ -1.0%	↓ -1.0%	43.33	2234	45.83	
REGENTTEX	24.2	24.5	24.1	505	631,582	15.4	24.31	↑ 53%	1.30%	↓ -0.8%	↓ -1.6%	33.47	2795	19.65	
RNSPIN	22.3	22.6	22.2	853	1,261,153	28.3	22.40	↑ 16%	2.39%	↑ 0.0%	↓ -0.4%	52.00	5526	22.08	
SAFKOSPINN	17.2	17.8	17.0	586	1,634,104	28.3	17.34	↑ 231%	2.40%	↑ 1.2%	↑ 2.4%	58.84	481	113.56	
SAIHAMCOT	19.6	19.9	19.5	211	434,040	8.6	19.70	↓ -60%	0.72%	↓ -0.5%	↓ -3.4%	41.40	2916	17.73	

Daily Stock Market Report

Sunday, September 10, 2017

Sectorwise Traded Scrips

Ticker	Close	High	Low	No of Trade	Volume	Turnover	VWAP***	Changes in Turnover	% of total Sector Turnover	Price Return****		RSI*****	Market Cap.	Trailing PE
										1 Day	5 Day			
Textile														
SAIHAMTEX	46.3	47.0	46.2	1032	1327496	61.7	46.51	↑ 20%	5.22%	↓ -0.6%	↓ -1.3%	45.5	5384	8.58
SHASHADNIM	64.8	65.5	64.0	216	143524	9.3	64.93	↓ -26%	0.79%	↓ -0.2%	↓ -3.0%	29.1	7309	12.63
SHEPHERD	40.4	41.0	40.2	384	334204	13.5	40.44	↓ -9%	1.14%	↑ 0.0%	↓ -1.2%	46.2	5018	N/A
SIMTEX	33.3	33.9	32.7	385	1392797	46.2	64.93	↑ 50%	3.90%	↑ 1.2%	↑ 1.2%	57.0	1996	13.37
SONARGAON	13.8	14.0	13.4	22	21846	0.3	13.80	↓ -75%	0.03%	↓ -2.1%	↑ 0.0%	52.9	365	69.00
SQUARETEXT	67.3	67.5	66.7	129	131566	8.9	67.32	↑ 244%	0.75%	↑ 0.7%	↑ 2.0%	57.2	12041	24.91
STYLECRAFT	1451.1	1478.4	1450.0	18	83	0.1	1451.11	↓ -58%	0.01%	↑ 0.2%	↑ 0.4%	54.9	798	17.82
TALLUSPIN	12.3	13.4	12.0	424	724189	9.2	12.64	↓ -57%	0.77%	↓ -0.8%	↑ 11.8%	73.6	1099	0.00
TOSRIFA	27.7	28.6	27.0	193	192116	5.4	12.64	↓ -28%	0.45%	↓ -2.1%	↓ -6.1%	44.2	1750	16.31
TUNGHAI	16.7	17.3	16.7	756	2936122	49.6	16.91	↑ 16%	4.19%	↓ -1.2%	↓ -3.5%	39.0	1781	19.95
ZAHEENSPIN	26.3	26.4	25.8	337	956636	25.0	26.13	↓ -8%	2.11%	↑ 1.9%	↑ 0.0%	46.5	2254	18.92
ZAHINTEX	18.7	19.0	18.6	246	405649	7.6	18.76	↓ -44%	0.64%	↓ -0.5%	↓ -2.6%	36.6	1391	20.39

Daily Stock Market Report

Sunday, September 10, 2017

Mutual Fund

Ticker	High	Low	Close	No of Trade	Volume	Turnover (BDT in Mn)	Latest NAV		NAV at (MV/CP)	Closing Price/NAV
							Market Valu	Cost Price		
1JANATAMF	7.1	6.8	7.0	174.0	902,837.0	6.3	11.80	10.58	1.12	0.59
1STPRIMFMF	17.4	16.1	16.2	164	552,573	8.97	13.40	17.05	0.79	1.21
ABB1STMF	7.0	6.7	6.9	232.0	7,298,204.0	50.0	12.40	10.99	1.13	0.56
AIBL1STIMF	8.1	7.9	8.1	43	413,456	3.33	11.03	9.97	1.11	0.73
ATCSLGF	12.5	12.1	12.3	125.0	966,641.0	11.9	13.24	11.56	1.15	0.93
CAPMBDBLMF	0	0	8.6	0	0	0	10.66	10.76	0.99	0.81
DBH1STMF	9.0	8.9	8.9	21.0	294,235.0	2.6	11.70	10.09	1.16	0.76
EBL1STMF	8.2	7.8	8.1	219	2,416,989	19.31	11.57	10.43	1.11	0.70
EBLNRBMF	6.9	6.8	6.8	29.0	434,928.0	3.0	11.48	10.45	1.10	0.59
EXIM1STMF	7.4	7.2	7.3	84	528,536	3.87	12.10	10.60	1.14	0.60
FBFIF	6.5	6.4	6.4	123.0	1,013,874.0	6.5	11.89	10.59	1.12	0.54
GRAMEENS2	15.6	15.3	15.5	186	813,183	12.56	20.80	11.30	1.84	0.75
GREENDELMF	8.9	8.7	8.9	27.0	171,500.0	1.5	11.73	10.09	1.16	0.76
ICB2NDNRB	10.8	10.6	10.6	61	141,258	1.50	13.32	15.62	0.85	0.80
ICB3RDNRB	7.3	7.2	7.2	39.0	100,070.0	0.7	9.55	12.00	0.80	0.75
ICBAMCL2ND	9.0	8.8	8.9	24	51,502	0.46	11.32	13.95	0.81	0.79
ICBEPMF1S1	7.8	7.6	7.8	52.0	164,219.0	1.3	9.79	12.45	0.79	0.80
ICBSONALI1	0	0	8.6	0	0	0	11.17	11.70	0.95	0.77
IFIC1STMF	6.9	6.6	6.8	67.0	893,613.0	6.1	11.63	10.65	1.09	0.58
IFILISLMF1	8.6	8.3	8.5	49	195,713	1.66	10.92	11.94	0.91	0.78
LRGLOBMF1	8.3	8.2	8.2	55.0	836,290.0	6.9	11.90	10.24	1.16	0.69
MBL1STMF	9.4	9.0	9.2	6	123,903	1.14	11.66	10.04	1.16	0.79
NCCBLMF1	9.1	8.9	9.0	16.0	92,213.0	0.8	11.78	10.38	1.13	0.76
NLI1STMF	14.8	14.7	14.8	22	260,285	3.85	15.87	12.60	1.26	0.93
PF1STMF	7.5	7.3	7.4	21.0	28,208.0	0.2	9.96	12.14	0.82	0.74
PHPMF1	7.2	7.0	7.0	106	466,660	3.31	11.66	10.39	1.12	0.60
POPULAR1MF	6.9	6.7	6.7	143.0	1,842,011.0	12.5	11.76	10.65	1.10	0.57
PRIME1ICBA	7.8	7.7	7.7	33	132,522	1.02	10.55	12.29	0.86	0.73
RELIANCE1	11.8	11.6	11.8	55.0	318,737.0	3.7	15.01	11.60	1.29	0.79
SEBL1STMF	13.9	13.7	13.8	49	267,950	3.70	14.87	11.91	1.25	0.93
SEMLIBBSLF	9.0	8.9	8.9	3.0	535.0	0.0	10.45	10.47	1.00	0.85
SEMILLECMF	9.3	9.2	9.3	6	19,900	0.19	11.50	11.51	1.00	0.81
TRUSTB1MF	7.0	6.9	6.9	104.0	705,378.0	4.9	12.22	10.60	1.15	0.56
VAMLBDMF1	9.8	9.7	9.8	7	21,767	0.21	12.56	11.42	1.10	0.78
VAMLRBBF	10.1	9.9	9.9	3.0	501.0	0.0	12.85	11.49	1.12	0.77

Traded above 20% discount
Traded at premium
Traded around 1% to 20% discount

BLOCK TRANSACTIONS

Instr Code	Max Price	Min Price	Trades	Quantity	Value(In mn)
ACIFORMULA	216.0	216.0	1.0	110,324.0	23.8
ACMELAB	121.00	120.00	2.00	75,275.00	9.07
AMANFEED	81.0	81.0	1.0	226,469.0	18.3
AMCL(PRAN)	231.00	231.00	1.00	19,990.00	4.62
DBH1STMF	8.9	8.9	1.0	2,000,000.0	17.8
EHL	54.50	54.50	1.00	39,363.00	2.15
FAREASTLIF	86.0	86.0	1.0	158,497.0	13.6
JAMUNAOIL	221.00	221.00	1.00	700,135.00	154.73
MBL1STMF	9.1	9.1	2.0	1,000,000.0	9.1
OLYMPIC	286.00	286.00	1.00	3,000.00	0.86
ORIONPHARM	54.2	54.2	1.0	2,055,072.0	111.4
PREMIERCEM	95.00	95.00	1.00	1,043,592.00	99.14
RENATA	1,140.0	1,140.0	1.0	5,000.0	5.7
SINGERBD	210.00	210.00	1.00	44,693.00	9.39

Daily Stock Market Report



Sunday, September 10, 2017

SAPORTLNews Title:SAPORTL: Dividend DeclarationNews:The Board of Directors has recommended 15% cash dividend for the 18 months period ended on June 30, 2017. Date of AGM: 25.10.2017, Time: 11:30 AM, Venue: Hall 24, C.R.B Road, West Side of M.A. Aziz Stadium, Chittagong-4204. Record Date: 27.09.2017. The Company has also reported Consolidated EPS of Tk. 1.11, Consolidated NAV per share of Tk.25.04 and Consolidated NOCFPS of Tk. 1.71 for the 18 months period ended on June 30, 2017.

SUMITPOWERNews Title:SUMITPOWER: Dividend DeclarationNews:The Board of Directors has recommended 30% cash dividend for the 18 months period ended on June 30, 2017. Date of AGM: 26.10.2017, Time: 11:00 AM, Venue: Krisibid Institute Complex BD. (KIB), Krishi Khamar Sarak (Khamarbari) Farmgate, Dhaka-1215. Record Date: 27.09.2017. The Company has also reported EPS of Tk. 5.75, NAV per share of Tk. 29.02 and NOCFPS of Tk. 4.85 for the 18 months period ended on June 30, 2017 and Tk. 3.76, Tk. 29.02 and Tk. 3.68 respectively. for the 12 months period ended on June 30, 2017. The Company has also reported EPS of Tk. 3.36 (restated), NAV per share of Tk. 26.22 and NOCFPS of Tk. 4.14 (restated) respectively for the 12 months period ended on December 31, 2015.

Daily Stock Market Report



Sunday, September 10, 2017

LBSL's Research Reports are also available on
Bloomberg LANB <GO>
lankabangla.duinvest.com

Disclaimers

This document ("the Report") is published by LankaBangla Securities Ltd ("LBSL") for information only of its clients. All information and analysis in this Report have been compiled from and analyzed on the basis of LBSL's own research of publicly available documentation and information. LBSL has prepared the Report solely for informational purposes and consistent with Rules and regulations of SEC. The information provided in the Report is not intended to, and does not encompass all the factors to be considered in a best execution analysis and related order routing determinations. LBSL does not represent, warrant, or guarantee that the Report is accurate. LBSL disclaims liability for any direct, indirect, punitive, special, consequential, or incidental damages related to the Reports or the use of the Report. The information and analysis provided in the Report may be impacted by market data system outages or errors, both internal and external, and affected by frequent movement of market and events. Certain assumptions have been made in preparing the Report, and changes to the assumptions may have a material impact on results. The Report does not endorse or recommend any particular security or market participant. LBSL, its analysts and officers confirm that they have not received and will not receive any direct or indirect compensation in exchange for expressing any specific recommendation, opinion or views in its Report. The information and data provided herein is the exclusive property of LBSL and cannot be redistributed in any form or manner without the prior written consent of LBSL. This disclaimer applies to the Report in their entirety, irrespective of whether the Report is used or viewed in whole or in part.

LBSL Capital Market Research Department

Analyst	Designation	E-mail
Md. Rezwanaur Rahman	Senior Research Associate	rezwanur.rahman@lbsbd.com
Salma Yeasmin Xinat	Senior Research Associate	salma@lbsbd.com
Debashish Sutradhar	Senior Research Associate	debashish.sutradhar@lbsbd.com
Quazi Naureen Ahmed	Research Associate	naureen.quazi@lbsbd.com
Ahmed Irtiza	Research Associate	ahmed.irtiza@lbsbd.com
Salman Rahman	Research Associate	salman.rahman@lbsbd.com

Institutional & Foreign Trade Department

Rehan Muhammad	Head of Business	rehan@lbsbd.com/rmuhammad1@bloomberg .net
----------------	------------------	---

Financial Model Developed & Designed By : Md. Mahfuzur Rahman